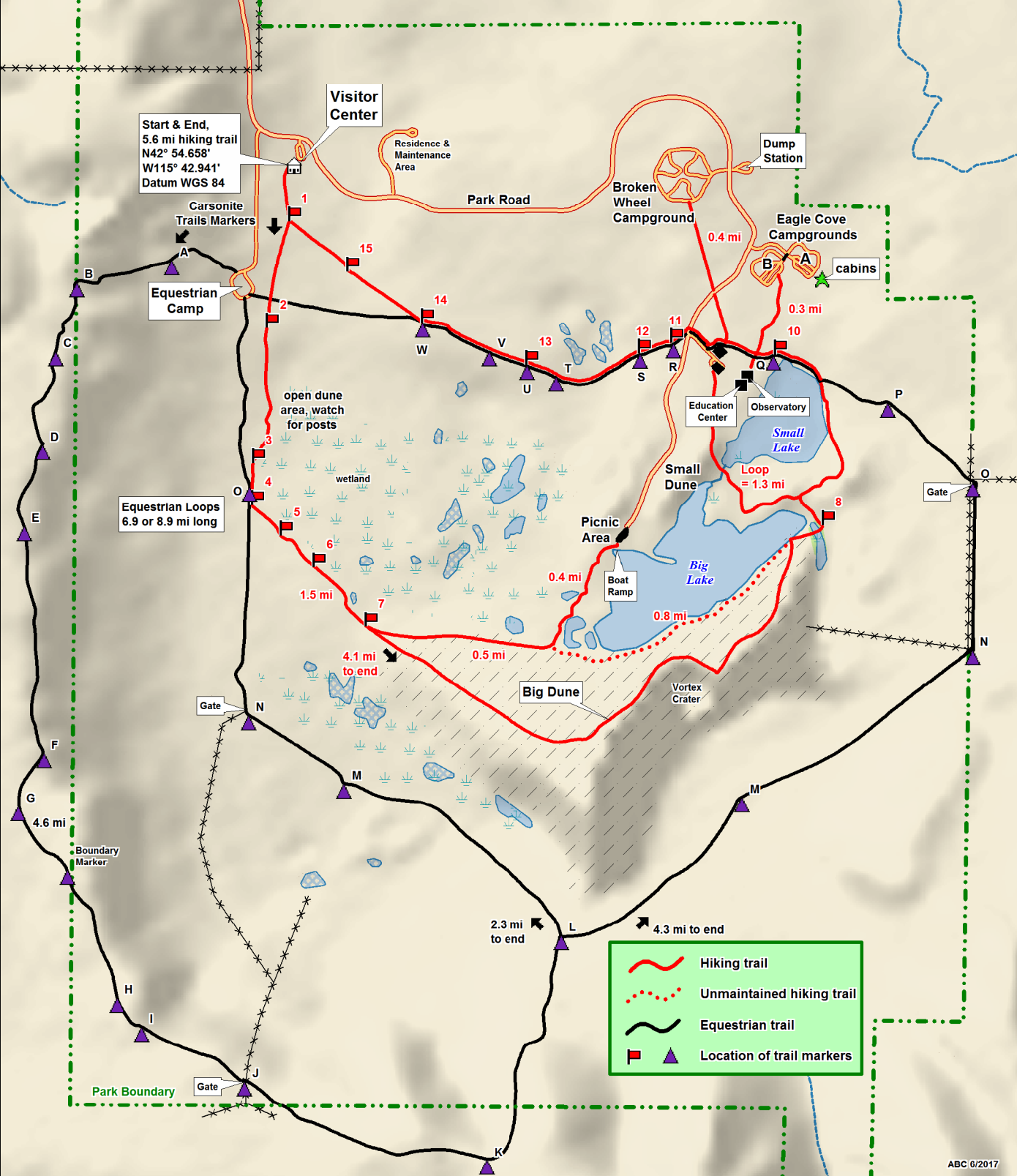


← to Mtn Home, 18 mi Highway 78 to Hammett, 14 mi →

Bruneau Dunes State Park Year-Round Trails



Start & End,
5.6 mi hiking trail
N42° 54.658'
W115° 42.941'
Datum WGS 84

Equestrian Loops
6.9 or 8.9 mi long

Legend

- Hiking trail
- Unmaintained hiking trail
- Equestrian trail
- Location of trail markers

Data use subject to license.

© DeLorme. XMap® 6.

www.delorme.com



Scale 1 : 25,000

1" = 2,083.3 ft Data Zoom 13-0

ABC 6/2017