

IDAPA RULE                       IDAPA FEE                       BOARD ACTION REQUIRED  
 BOARD POLICY                       INFO ONLY, NO ACTION REQUIRED

**AGENDA ITEM**  
**Idaho Park and Recreation Quarterly Meeting**  
**May 18-19, 2022**  
**Fairfield by Marriott**  
**1000 W. Pullman Rd.**  
**Moscow, ID**

**AGENDA ITEM:** Natural Resource program background and project update

**ACTION REQUIRED:** Project updates, Informational only

**PRESENTER:** Keith Jones, Natural Resource Program Manager

**PRESENTATION**

**BACKGROUND INFORMATION:** Introduction and management strategies of the Natural Resource Program, and program project updates.

**STAFF RECOMMENDATIONS:** None, Information only

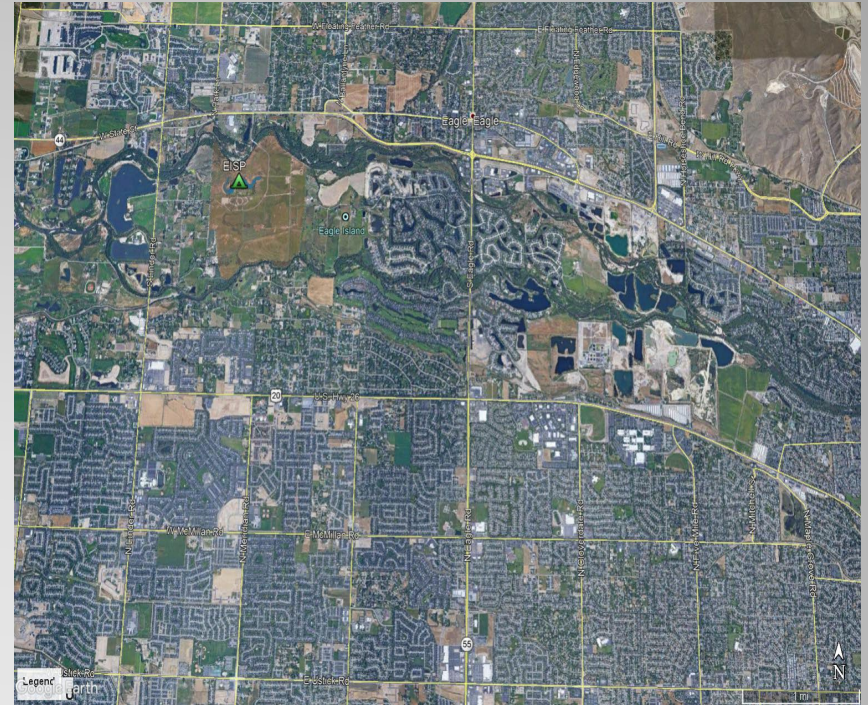
# Natural Resource Program Update

Presented by Keith Jones

# Carrying capacity



Eagle Is. 1998



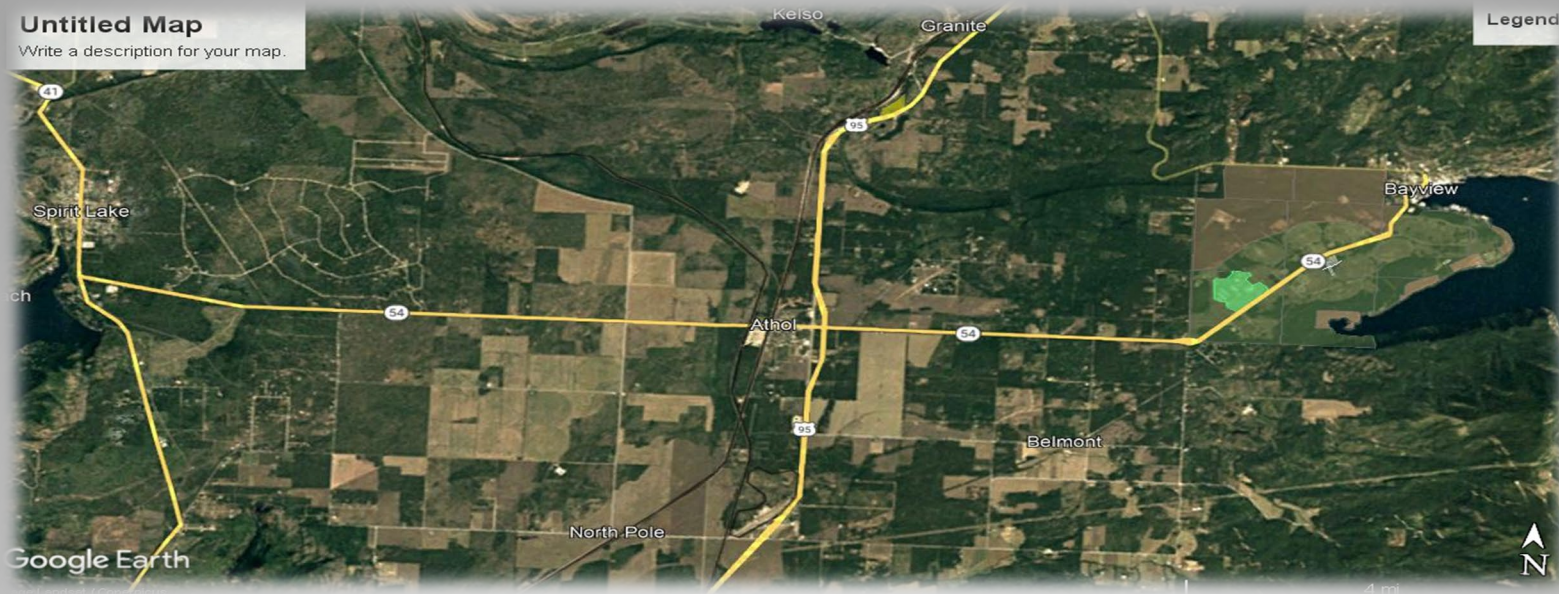
Eagle Is. 2018

“To improve the quality of life in Idaho through outdoor recreation and **resource stewardship**”

### Untitled Map

Write a description for your map.

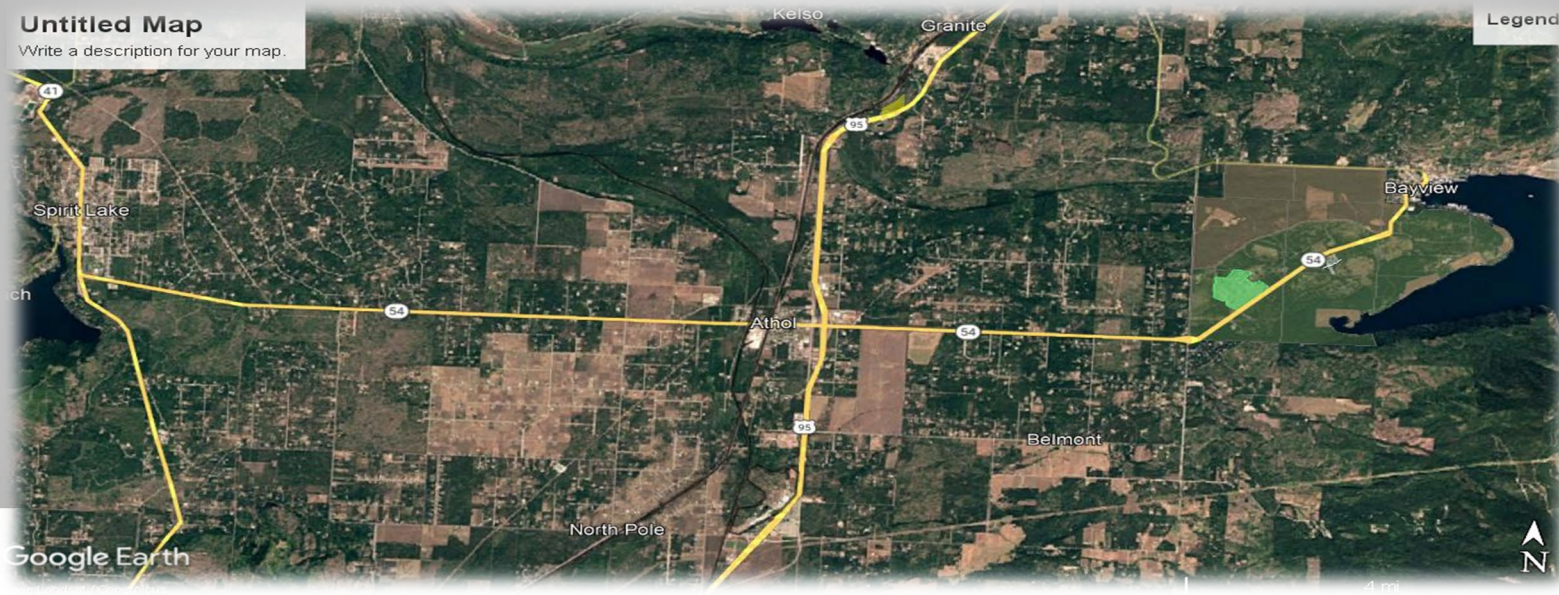
Legend



### Untitled Map

Write a description for your map.

Legend



# Key program components

- Forest Management
- Noxious weed management
- Hazard tree Management
- Hazard fuels mitigation

# Forest Res. Management Priorities

- Quality/Safe user experiences
- Forest Resilience
- Habitat improvement
- Historical Restoration
- Reintroduction of disturbance regimes.
- Fire Protection
- Educational Opportunities



05/29/2012 12:11



Ponderosa - cut in 1996

07/11/2011 10:52

# Holistic Management



**Selective Prescriptions vs..**





# Production Management

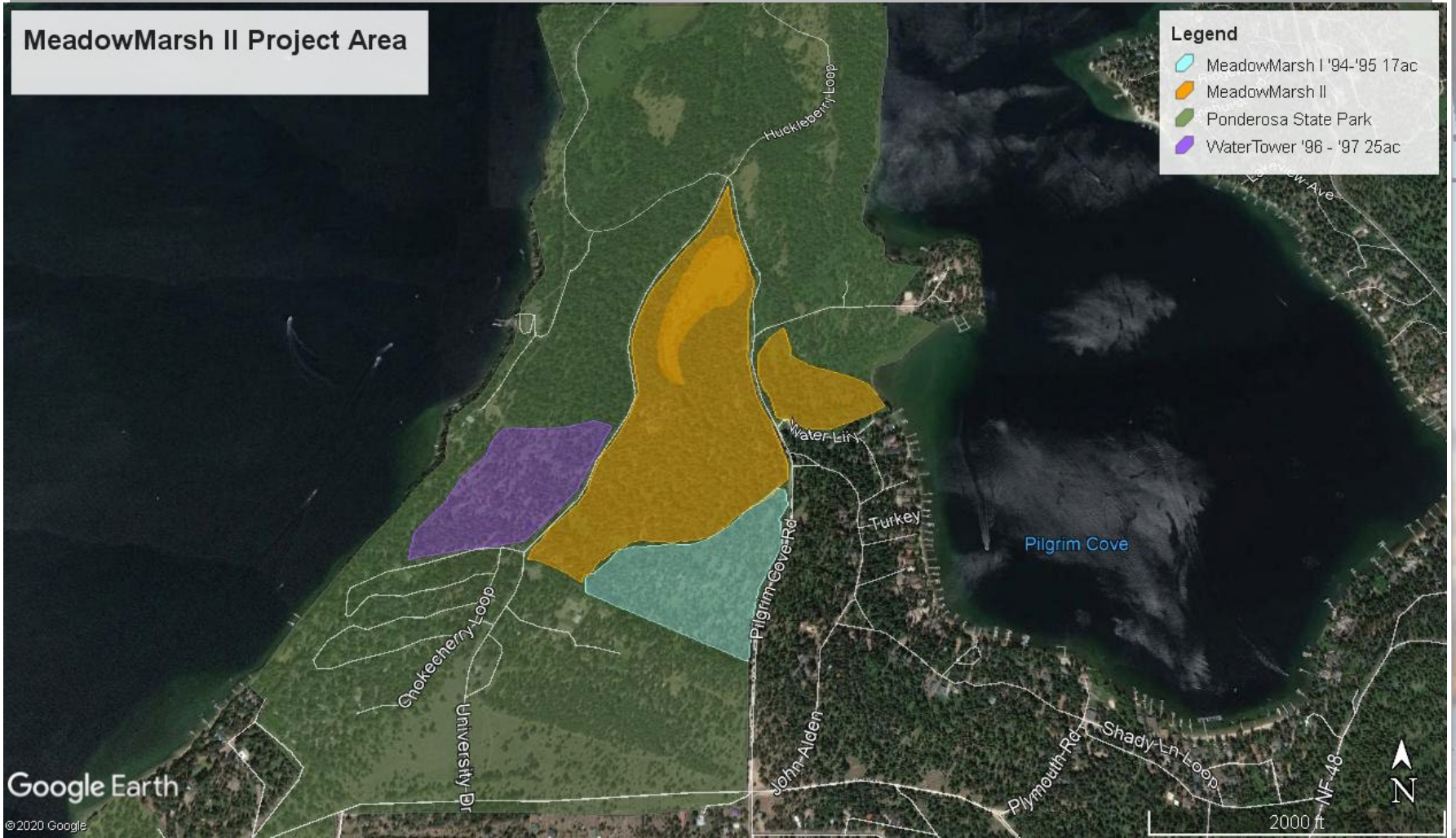


## **Cooperative P.Pine Restoration at Farragut**

## MeadowMarsh II Project Area

### Legend

- MeadowMarsh I '94-'95 17ac
- MeadowMarsh II
- Ponderosa State Park
- WaterTower '96 - '97 25ac



# PSP Ponderosa Pine Restoration

A photograph of a forest with many tall, thin trees and fallen branches on the ground. The trees are mostly conifers, and the ground is covered with pine needles and dry branches. The lighting is bright, suggesting a sunny day. The image is framed by a white border.

**MeadowMarshII**





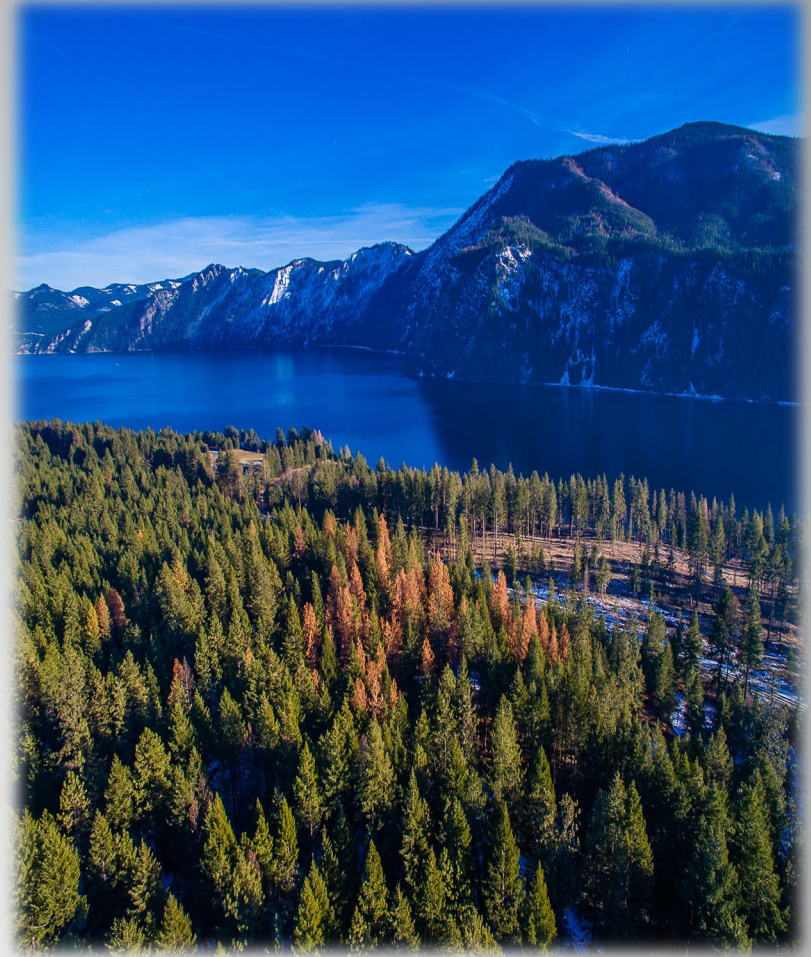


## MeadowMarshII



**Ponderosa**





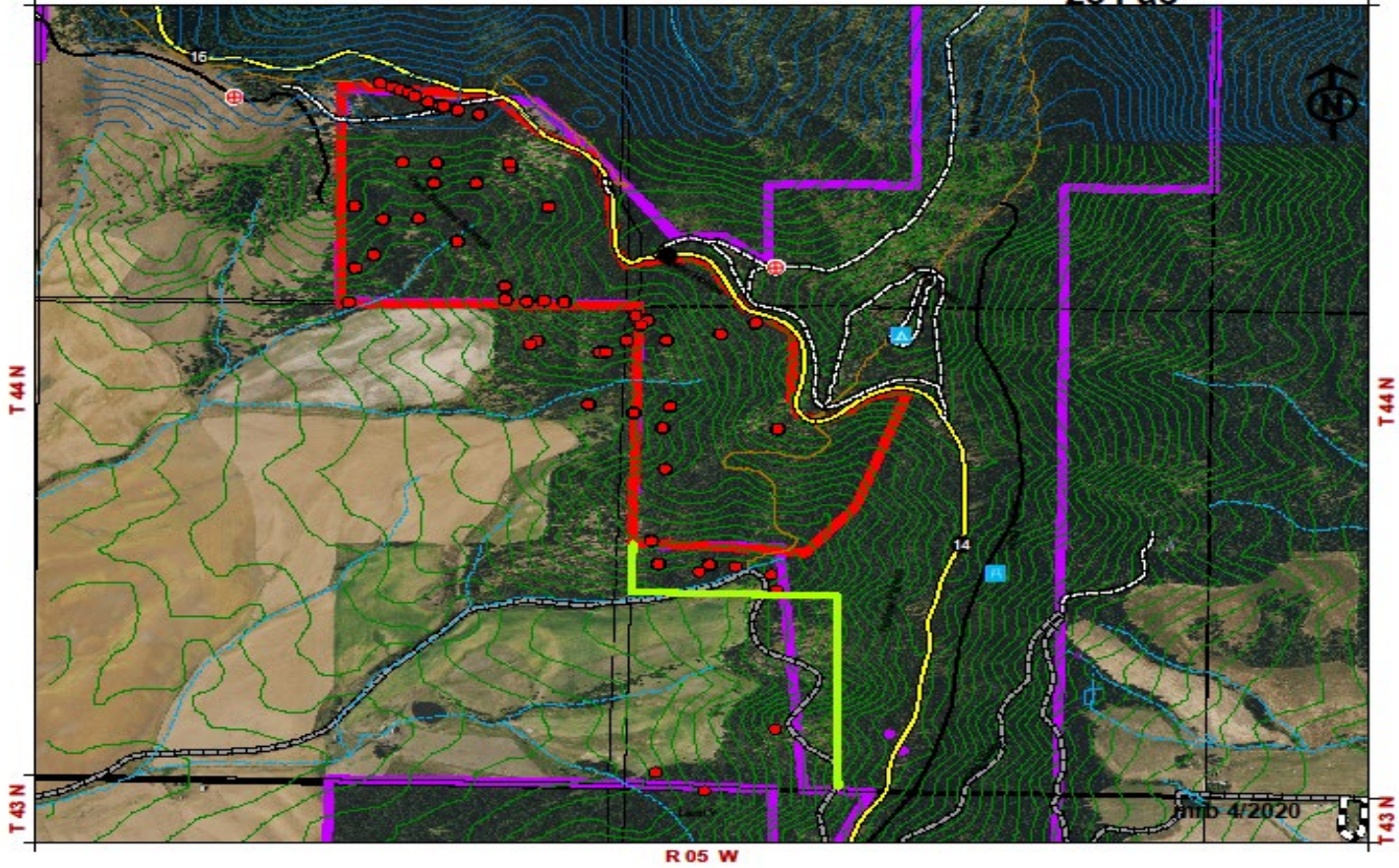
**Robust outbreak response**



**Farragut DS in process**

# Park Beetles Salvage

R 05 W 234 ac



**McCroskey**





**McCroskey in process**



# Resource impacts/living pads



# Regeneration, Seed Banking



# Cooperative Planting





# Hazard tree assessments



SPEED  
LIMIT  
10



# Hazard tree assessments

# Noxious Weed Control & IPM.

- Promote native species
- Site Restoration
- Improve Habitat
- Maximize aesthetic experiences
- Provide the best user experience possible
- Be a responsible steward and neighbor
- Be cost effective and efficient.



# Herbicide Treatments.



# Mechanical Treatment



**Mechanical**



# Tammany Creek Restoration



**Bio Control**

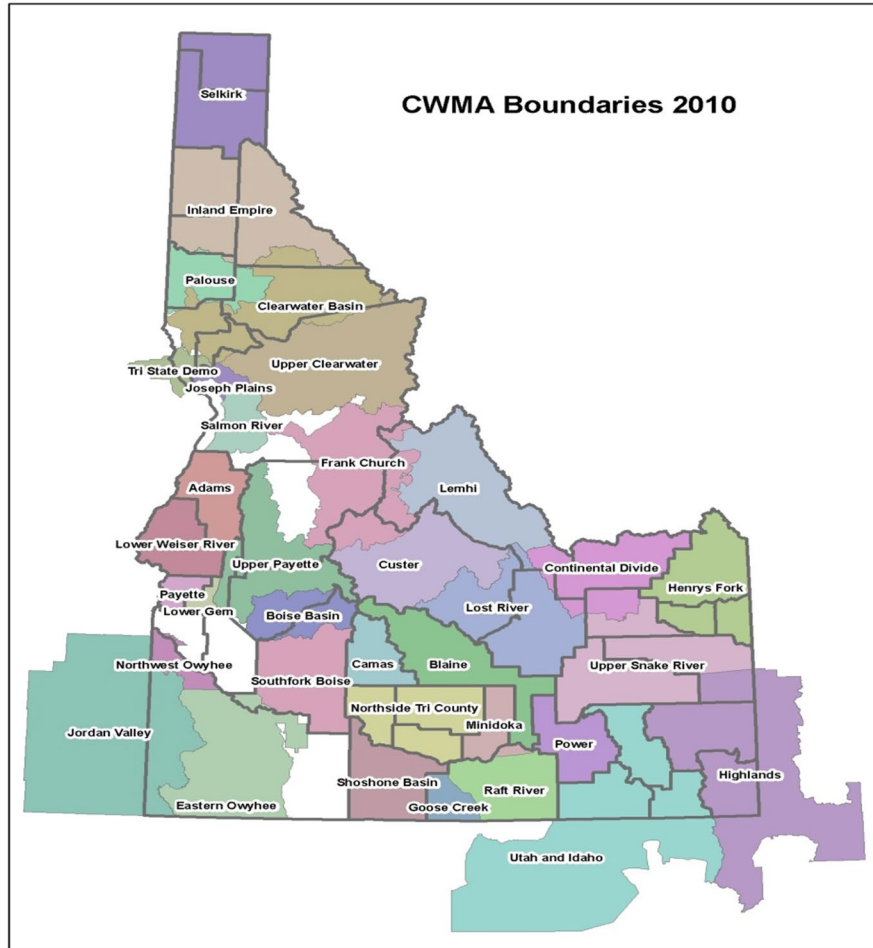




# Prescriptive Grazing



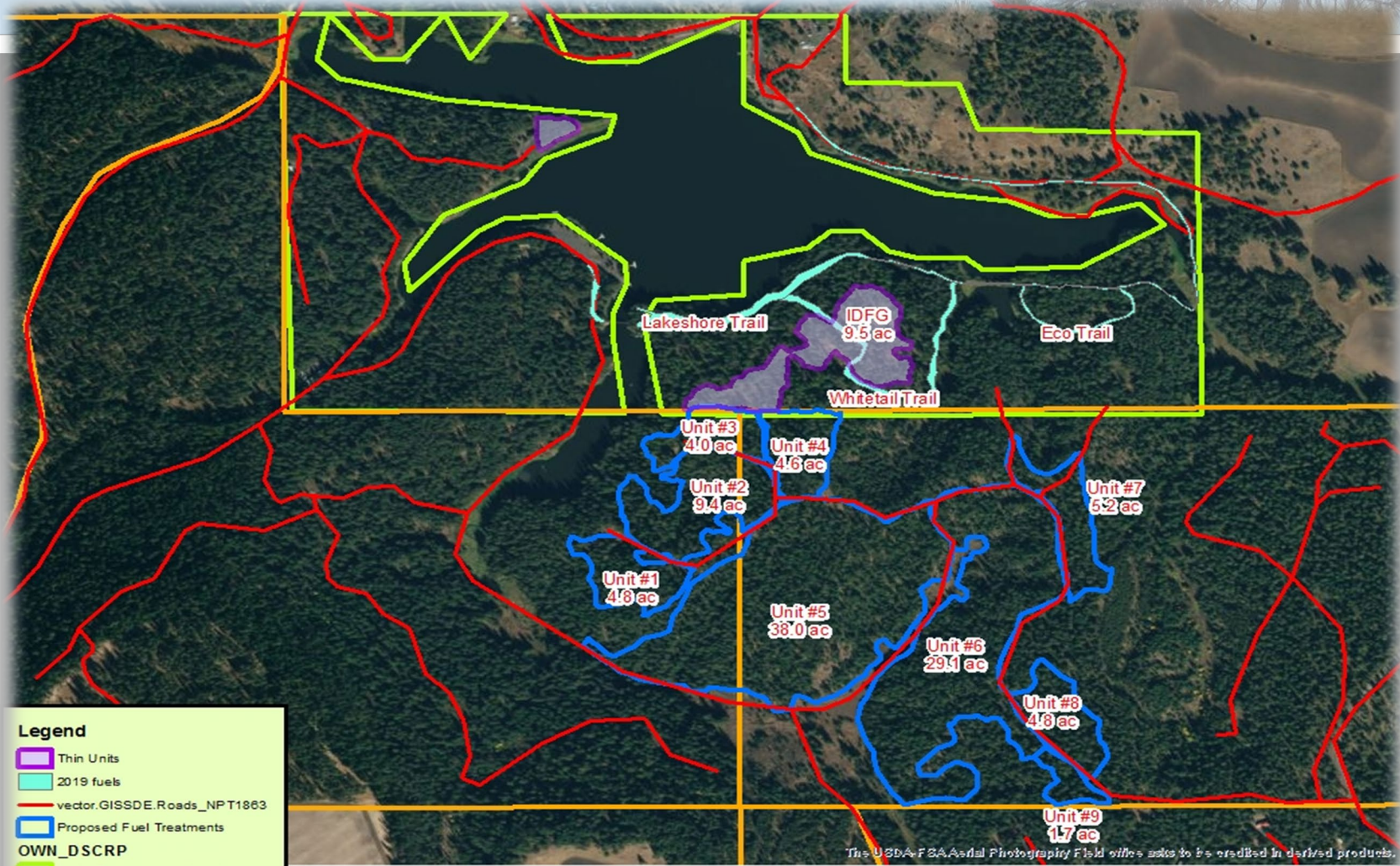
**Pheremones**



# CWMA's and Partnerships

# Fuels Mitigation

- Firewise State Parks
- Visitor Safety
- Infrastructure protection
- Resource protection
- Visitor Experience Protection



**Legend**

- ▭ Thin Units
- ▭ 2019 fuels
- ▭ vector.GISSDE.Roads\_NPT1863
- ▭ Proposed Fuel Treatments

**OWN\_DSCRIP**

- ▭ Idaho Department of Lands
- ▭ Non-Indian Fee Simple
- ▭ Tribal Trust

The USDA-FSA Aerial Photography Field Office asks to be credited in derived products.

Winchester State Park  
 Tim Droegmiller 6/5/2019

1:9,000

# Winchester fuels mgt.



**WSP thinning**

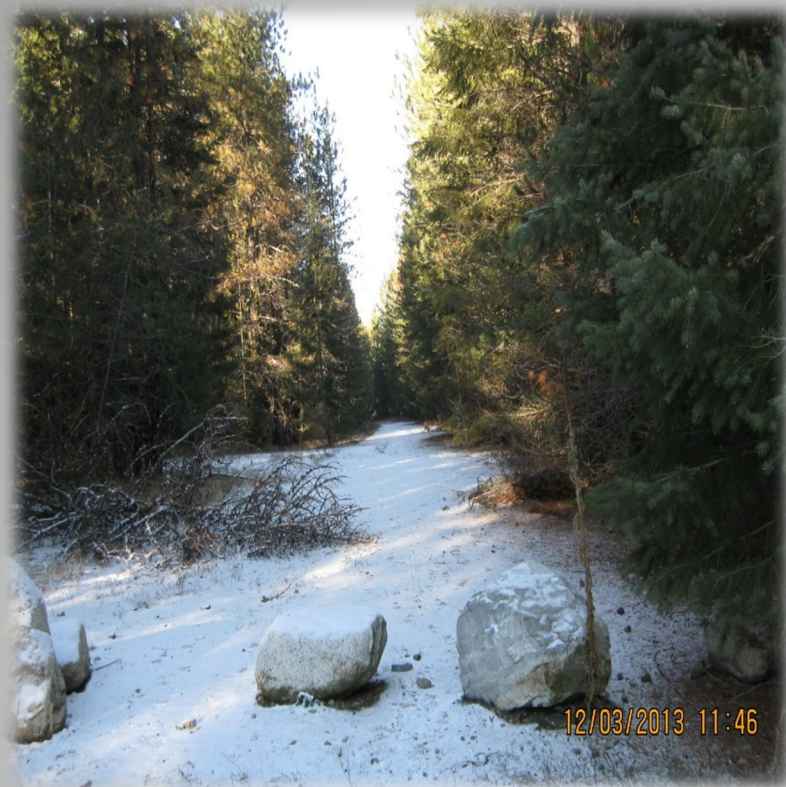


**WSP Rx burn October**



**WSP Rx burn May**





## Defensible Space



## **Shaded Fuel Breaks**



# Ponderosa



# Tools of the Trade

## Program Priorities

- **Ponderosa and W. White Pine Restoration:** Heyburn, Ponderosa, McCroskey, Farragut, Winchester, Priest
- **Fire Mitigation:** Henrys Lake, Harriman, Ponderosa, Dworshak, Winchester, Bruneau, Priest Lake
- **Developed site veg mgt plans:** Priest (Lionhead), Ponderosa, Heyburn, Winchester
- **Aspen Restoration:** Ponderosa, Harriman, Henrys Lake



**Questions?**