

- Moderate Scenic Integrity Areas**—Occur across the forest and reflect areas in which management activities have, and continue to be visible. The deviations created on the landscape, although visible, are not dominant. The management activities are subordinate to the attributes described in the scenic character of the GA.
- Low scenic integrity areas**—Typically limited to those landscapes containing active and repeated management to extract forest products. Management activities, although visible and sometimes a dominant feature on the landscape, employ techniques that repeat lines, forms, colors, and textures found in the natural landscape and described in scenic character.
- Scenery Management System**—Provides consistent terminology, processes, and protocols to define the relative value and importance of scenery (existing and desired) on national forest system lands. (USDA Dept. of Ag. Handbook 701)
- Section 5(a) study rivers**—See Legislatively Mandated Study Rivers. FSH 1909.12 Chapter 80
- Section 5(d)(1) Study Rivers or Section 5(d)(1) Eligible or Suitable Study Rivers**—See Forest Service-Identified Study Rivers. FSH 1909.12 Chapter 80
- Silvicultural practices**—Activities that control the establishment, composition, structure, and function of forested ecosystems.
- Silvicultural prescriptions**—A silvicultural prescription is a written document that describes in detail the management activities needed to implement a silvicultural treatment or treatment sequence. The prescription is based on an examination of the stand being proposed for management. The prescription documents the results of an analysis of present and anticipated future stand conditions and evaluates this in terms of management direction. It also describes the desired future vegetation conditions in measurable terms.
- Size class**—Size class is based on basal area weighted diameter of the plot/stand. Weighted diameter is calculated then classification is made as follows according to weighted diameter:
- Seedling/sapling:** 0.0 – 4.9 inch DBH (if basal area weighted diameter is 0.0, must have 100 or more trees per acre)
 - Small:** 5.0 – 9.9 inch
 - Medium:** 10.0 – 14.9 inch
 - Large:** 15.0 +
- Snag**—A standing dead tree usually greater than five feet in height and six inches in diameter at breast height (DBH).
- Soil productivity**—The inherent capacity of the soil resource to support appropriate site-specific biological resource management objectives, which includes the growth of specified plants, plant communities, or a sequence of plant communities to support multiple land uses.
- Soil quality**—The capacity of a specific kind of soil to function, within natural or managed ecosystem boundaries, to sustain plant and animal productivity, maintain or enhance water and air quality, and support human health and habitation and ecosystem health.

Soil quality indicator—A quantitative or qualitative measure used to estimate soil functional capacity. Indicators should be adequately sensitive to change, accurately reflect the processes or biophysical mechanisms relevant to the function of interest, and be cost effective and relatively easy and practical to measure.

Special use authorization—A permit, term permit, lease, or easement that allows occupancy, use, rights, or privileges of NFS land.

Species of conservation concern (SCC)—A species of conservation concern is a species, other than federally recognized threatened, endangered, proposed, or candidate species, that is known to occur in the plan area and for which the regional forester has determined that the best available scientific information indicates substantial concern about the species' capability to persist over the long-term in the plan area.

Stand replacement fire—A fire severity classification where at least 75 percent average top-kill of vegetation occurs within a typical fire perimeter.

Structure (stand)—The horizontal and vertical distribution of components of a forest stand including: the height, diameter, crown layers, and stems of trees, shrubs, herbaceous understory, snags, and down woody debris.

Study process—The process of inventorying rivers to determine if the rivers are eligible for inclusion in the National System and the process of evaluating eligible rivers to determine if the rivers are suitable for inclusion in the National System.

Substantive formal comments—Written comments submitted to, or oral comments recorded by, the responsible official or his designee during an opportunity for public participation provided during the planning process (secs. 219.4 and 219.16), and attributed to the individual or entity providing them. Comments are considered substantive when they are within the scope of the proposal, are specific to the proposal, have a direct relationship to the proposal, and include supporting reasons for the responsible official to consider.

Suitable habitat—Habitat that currently has both the fixed and variable stand attributes for a given species habitat requirements. Variable attributes change over time and may include seral stage, cover type and overstory canopy cover.

Suitable range—Those areas where livestock grazing can be economically managed to be compatible with desired conditions and objectives.

Suitable river—A river segment that has been studied and determined to be suitable for inclusion in the National Wild and Scenic River System but has not yet been statutorily designated. A river found suitable for inclusion in the National System is a river that the agency will recommend or has recommended for inclusion in the system. FSH 1909.12 Chapter 80.

Sustainability— The capability to meet the needs of the present generation without compromising the ability of future generations to meet their needs. For the purposes of this Handbook “ecological sustainability” refers to the capability of ecosystems to maintain ecological integrity; “economic sustainability” refers to the capability of society to produce and consume or otherwise benefit from goods and services including contributions to jobs and market and nonmarket benefits; and “social sustainability” refers to the capability of society to support the network of relationships, traditions, culture, and activities that connect people to the land and to one another, and support vibrant communities.

Sustainable recreation—The set of recreation settings and opportunities on the National Forest System that is ecologically, economically, and socially sustainable for present and future generations. (36 CFR 219.19). To be sustainable means that the settings and opportunities provided are compatible with other plan components that provide for ecological sustainability, foster healthy social relationships among recreationists and with the broader community, and contribute to the economics of the planning unit and surrounding communities. The focus of recreation planning within the land management planning is to provide a set of plan components that can fulfill the public interest for recreational experiences sustainably in the future.

Temporary road or trail—A road or trail necessary for emergency operations or authorized by contract, permit, lease, or other written authorization that is not a forest road or a forest trail and that is not included in a forest transportation atlas.

Term grazing permit—One of four kinds of grazing permits issued by the USDA Forest Service with specific terms and conditions, and issued for a specific period of time, usually ten years.

Threatened species—Any species that is likely to become an endangered species within the foreseeable future throughout all or a significant portion of its range and which the appropriate Secretary has designated as a threatened species.

Timber harvest—The removal of trees for wood fiber utilization and other multiple-use purposes.

Timber production—The purposeful growing, tending, harvesting, and regeneration of regulated crops of trees to be cut into logs, bolts, or other round sections for industrial or consumer use. In addition, managing land to provide commercial timber products on a regulated basis with planned, scheduled entries.

Total soil resource commitment—The conversion of a productive site to an essentially non-productive site (0 percent to 40 percent of natural productivity) for a period of more than 50 years. Examples include system roads, administrative sites, developed campgrounds, rock quarries, mine sites, livestock watering facilities, and home protection zones.

Traditional cultural areas—Those areas of the forest used by American Indians for traditional activities and often referred to as “religious use areas” or “sacred areas.” They may include areas traditionally used for gathering of special forest products.

Trail—As defined by 36 CFR 212.1, a trail is a route 50 inches or less in width or a route over 50 inches wide that is identified and managed as a trail.

Trail (Forest Trail)—A trail wholly or partly within or adjacent to and serving the NFS that the Forest Service determines is necessary for the protection, administration, and utilization of the NFS and the use and development of its resources.

Trail (National Forest System Trail)—A forest trail, other than a trail which has been authorized by a legally documented right-of-way held by a state, county, or other local public road authority.

Trail classification—A numeric scale (0 through 5) to define attributes of a constructed trail. 0 is the least developed and 5 is the most developed. See Trail Class Matrix document for more detail. Trail class settings 1 to 3 are appropriate in primitive, semi-primitive nonmotorized, and semi-primitive motorized ROS settings.

Trail management objective—Trail Management Objectives (TMOs) define the intended purpose and management of a NFS trail. A TMO documents the five Trail Fundamentals, ROS classifications, and travel management strategies as they apply to an NFS trail. (FSH 7709.55, Chapter 10) See Trail Management Objective Overview document for more detail.

Transitory forage—Transitory forage is produced on forested lands that are suitable for livestock grazing for a limited time following a complete or partial forest removal.

Unauthorized route (road or trail)—A road or trail that is not a forest road or trail or a temporary road or trail and that is not included in a forest transportation atlas.

Unplanned ignitions—A wildland fire resulting from an unplanned event. Unplanned ignitions are caused by lightning, volcanoes, and unauthorized or accidental human-caused actions.

Vegetation management—Activities designed primarily to promote the health of forest vegetation in order to achieve desired results. When vegetation is actively managed, it means that it is manipulated or changed on purpose by humans to produce desired results. Where active management of vegetation is required, techniques are based on the latest scientific research and mimic natural processes as closely as possible. Vegetation management is the practice of manipulating the species mix, age, fuel load, and/or distribution of wildland plant communities within a prescribed or designated management area in order to achieve desired results. It includes prescribed burning, the use of unplanned fire ignitions, grazing, chemical applications, biomass harvesting, and any other economically feasible methods of enhancing, retarding, modifying, transplanting, or removing the aboveground parts of plants.

Viable population—A population of a species that continues to persist over the long term with sufficient distribution to be resilient and adaptable to stressors and likely future environments.

Watershed—A region or land area drained by a single stream, river, or drainage network; a drainage basin.

Wetlands—Those areas that are inundated by surface or ground water with a frequency sufficient to support, and under normal circumstances do or would support a prevalence of vegetation or aquatic life that requires saturated or seasonally saturated soil conditions for growth and reproduction. Wetlands generally include swamps, marshes, bogs, peatlands, and similar areas such as sloughs, potholes, wet meadows, river overflows, mud flats, and natural ponds.

Wild and Scenic River—A river designated by Congress as part of the National Wild and Scenic Rivers System that was established in the Wild and Scenic Rivers Act of 1968 916 U.S.C. 1271 (note), 1271-1287). 36 CFR 219.19

Wild and Scenic River classification—Identification of the class (wild, scenic, or recreational) that appropriately describes a river or river segment, based on the criteria established in section 2(b) of the WSR Act. FSH 1909.12 Chapter 80

Wild River Areas—Those rivers or sections of rivers that are free of impoundments and generally inaccessible except by trail, with watersheds or shorelines essentially primitive and waters unpolluted. These represent vestiges of primitive America.

Scenic River Areas—Those rivers or sections of rivers that are free of impoundments, with shorelines or watersheds still largely primitive and shorelines largely undeveloped, but accessible in places by roads.

Recreational River Areas—Those rivers or sections of rivers that are readily accessible by road or railroad, that may have some development along their shorelines, and that may have undergone some impoundment or diversion in the past.

Wild and Scenic River determination—A finding in the study document that the river segment meets the criteria to be first eligible, and then later, suitable for inclusion in the National System. (FSH 1909.12 Chapter 80)

Wilderness character— Wilderness character may be described as the combination of biophysical, experiential, and symbolic ideals that distinguish wilderness from all other lands. The definition of wilderness from section 2 (c) of the Wilderness Act identifies four qualities of wilderness related to wilderness character:

Untrammeled – wilderness is essentially unhindered and free from modern human control or manipulation;

Natural – wilderness ecological systems are substantially free from the effects of modern civilization;

Undeveloped – wilderness is essentially without permanent improvements or modern human occupation; and

Outstanding opportunities for solitude or a primitive and unconfined type of recreation – Wilderness provide outstanding opportunities for people to experience solitude or primitive and unconfined recreation, including the values of inspiration and physical and mental challenge.

Wildfire—Unplanned ignitions of a wildland fire (such as a fire caused by lightning or unauthorized and accidental human-caused fires) and escaped prescribed fires.

Wildland fire—A general term describing any non-structure fire that occurs in the wildland. Two distinct types of wildland fire have been defined and include planned ignitions (prescribed fire) and natural, unplanned fire (wildfire).

Wildland urban interface (WUI)—The term “wildland urban interface” means either:

- (A) an area within or adjacent to an at-risk community that is identified in recommendations to the Secretary in a community wildfire protection plan; or
- (B) in the case of any area for which a community wildfire protection plan is not in effect,
 - (i) an area extending ½-mile from the boundary of an at-risk community;
 - (ii) an area within 1 ½ miles of the boundary of an at-risk community, including any land that—
 - (I) has a sustained steep slope that creates the potential for wildfire behavior endangering the at-risk community;
 - (II) has a geographic feature that aids in creating an effective fire break, such as a road or ridge top; or
 - (III) is in condition class 3, as documented by the Secretary in the project-specific environmental analysis; and

- (iii) an area that is adjacent to an evacuation route for an at-risk community that the Secretary determines, in cooperation with the at-risk community, requires hazardous fuel reduction to provide safer evacuation from the at-risk community.

Acronyms

AMP	Allotment Management Plan	MMBF	Million Board Feet
ATV	All-terrain Vehicle	MMCF	Million Cubic Feet
BLM	Bureau of Land Management	MVUM	Motor Vehicle Use Map
BMP	Best Management Practices	NEPA	National Environmental Policy Act
CFR	Code of Federal Regulations	NFMA	National Forest Management Act
CPZ	Community Protection Zone	NFS	National Forest System
DBH	Diameter Breast Height	NPCW	Nez Perce-Clearwater National Forests
EIS	Environmental Impact Statement	OHV	Off-Highway Vehicle
EPA	Environmental Protection Agency	ORV	Outstanding Remarkable Values
ESA	Endangered Species Act	PCT	Pre-commercial Thin
FIS	Forest Inventory and Analysis	PSQ	Planned Sale Quantity
FS	Forest Service	RCA	Riparian Conservation Area
FSH	Forest Service Handbook	RNA	Research Natural Area
FSM	Forest Service Manual	ROS	Recreation Opportunity Spectrum
FWS	U.S. Fish and Wildlife Service	SIO	Scenic Integrity Objective
GDE	Groundwater Dependent Ecosystems	TMDL	Total Maximum Daily Load
HM	Head Month	TPSQ	Total Planned Sale Quantity
HUC	Hydrologic Unit Code	USDA	U.S. Department of Agriculture
IDFG	Idaho Department of Fish and Game	WSR	Wild and Scenic River
LAU	Lynx Analysis Unit	WSA	Wilderness Study Area
LTSYC	Long-Term Sustained Yield Capacity	WUI	Wildland Urban Interface
MA	Management Area		
MBF	Thousand Board Feet		
MCF	Thousand Cubic Feet		

Appendix B—Priority Watersheds

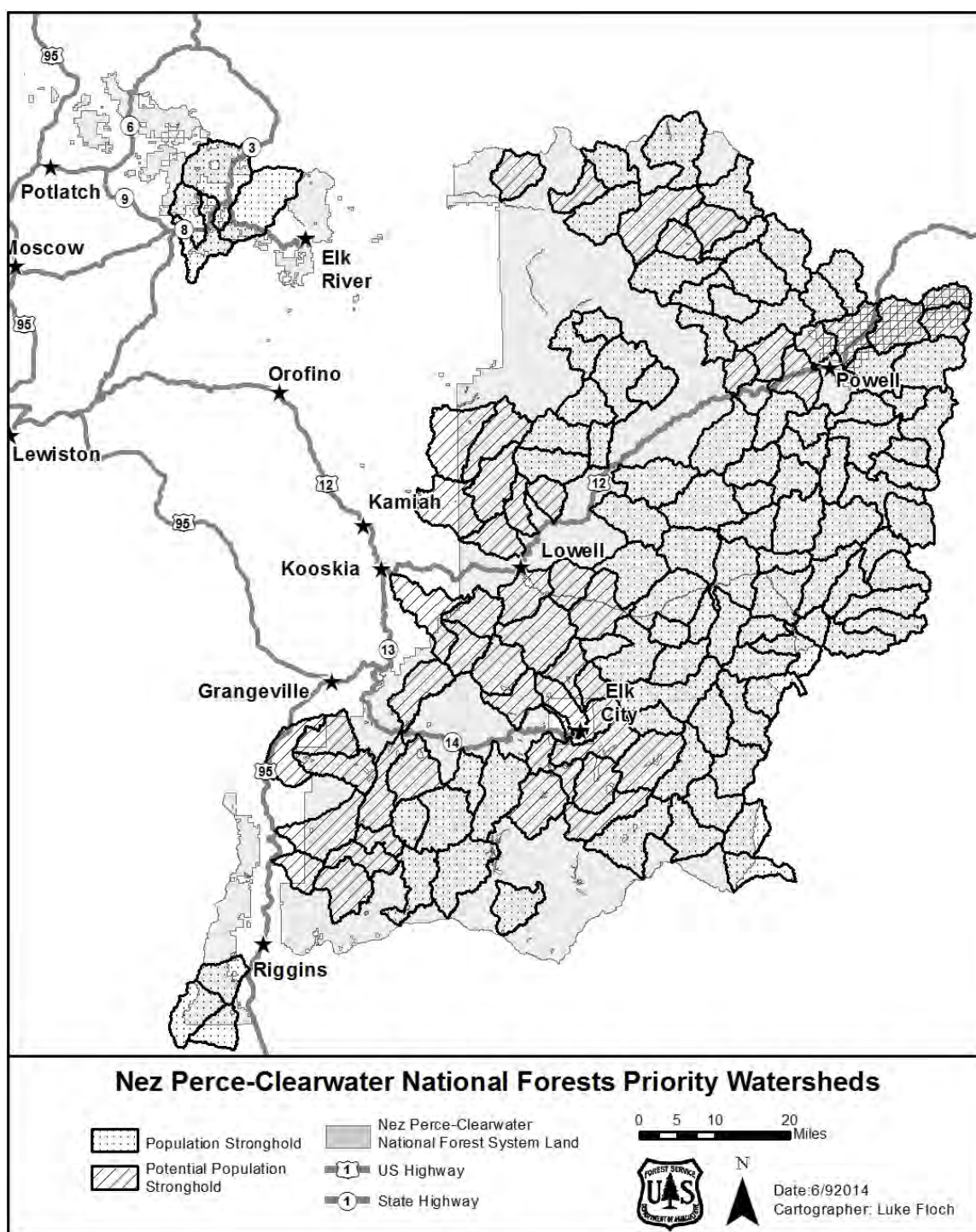


Figure 7. Nez-Perce-Clearwater National Forests Priority Watersheds (Large scale color map available online at: www.fs.usda.gov/main/nezperceclearwater)

Population Stronghold Watersheds

Watersheds at the 5th or 6th HUC scale to be managed to emphasize protection of populations of listed and proposed aquatic species and to contribute to their conservation and recovery at the 4th HUC scale. Population strongholds would support relatively robust populations and high quality habitat that would support expansion and re-colonization to adjacent watersheds. Considerations used to determine stronghold watersheds include: (1) high genetic integrity; (2) habitat connectivity; (3) genetic or phenotypic diversity; (4) abundance/productivity; and (5) potential for expansion into adjoining watersheds. Table 27 lists watersheds identified as population strongholds.

Table 27. Population Stronghold Watersheds

Lower/Middle Fork Clearwater	North Fork Clearwater	Lochsa	Lower Selway	Upper Selway	South Fork Clearwater	Salmon
None	NF Clearwater – Vanderbilt, Kelly Forks, Upper Kelly, Lower Kelly, Upper Cayuse, Middle Cayuse, Johnny, Collins, Lower Cayuse, Little Moose, Upper Weitas, Middle Weitas, Little Weitas, Lower Weitas, Upper Skull	Upper Crooked Fork, Boulder, Upper Colt Killed, Storm, Middle Colt Killed, Lower Colt Killed, Colt, Lower Warm Springs, Boulder Creek, Lake Creek, Upper Fish, Hungery, Lower Fish, Old Man	Gedney, Lower Meadow, Buck Lake, Sable, Middle Meadow, East Fork Meadow, Upper Meadow, Selway River – Pinchot, Three Links, Marten, Moose (all 6 th HUCs)	All 6 th HUCs on the Nez Perce/Clearwater NF	Upper Johns, Gospel, Tenmile	Upper Sabe, Lower Sabe, Upper Bargamin, Middle Bargamin, Lower Bargamin, Sheep, Lower Crooked Creek, Rapid River – Copper, West Fork Rapid River, Lower Rapid River

Potential Population Stronghold Watersheds

Watersheds at the 5th or 6th HUC scale to be managed to restore populations of listed and proposed aquatic species and to contribute to their conservation and recovery at the 4th HUC scale. Potential population stronghold watersheds would have high inherent capability to support spawning and rearing for the species identified. Objectives for management would include increasing growth and survival from direct habitat improvements and/or passive habitat and watershed management (or both), combined with re-colonization from stronghold watersheds and/or direct population recovery efforts (e.g. stocking or translocation). Table 28 lists watersheds identified as potential population strongholds.

Table 28. Potential Population Stronghold Watersheds

Lower Clearwater MF Clearwater	North Fork Clearwater	Lochsa	Lower Selway	South Fork Clearwater	Salmon
Upper Lolo, Middle Lolo, Musselshell, Eldorado, West Fork Upper Potlatch River, East Fork Potlatch River, Potlatch River – Hog Meadows, Corral Creek, Upper Clear, Middle Clear, South Fork Clear, Lower Clear	NF Clearwater – Elizabeth, Lower Skull, Moose, Osier, Quartz	Lower Crooked Fork, Spruce, Lower Brushy Fork, Legendary Bear, Lochsa River – Wendover, Fishing, Deadman, Lochsa River – Glade, Canyon, Pete King	O'Hara, Selway River – Goddard, Selway River – Rackliffe, Selway River - Glover	Upper Red River, South Fork Red River, Middle Red River, Lower Red River, Upper American River, East Fork American River, Lower American River, Elk, Upper Newsome, Lower Newsome, Upper Crooked River, Lower Crooked River, Mill, Meadow, Lower Johns	Upper Little Slate, Lower Little Slate, Upper Slate, Lower Slate, South Fork White Bird, North Fork White Bird, John Day

Table 29 identifies restoration priorities as identified in the aquatic restoration strategy.

Table 29. Aquatic Restoration Subbasin Summary and Forestwide Prioritization

6th HUC	Priority Within Subbasin	Priority Across Forest	Forestwide Rationale
North Fork Clearwater - Upper and Lower			
Meadow	1	3	Restoration priority 3 - because of the existing number of population strongholds for bull trout and their connectivity in the subbasin, lower priority than 1s and 2s in other subbasins. Restoration is still needed and should be implemented as opportunities arise. Meadow restoration – associated with brook trout control or removal at high priority.
Moose	2	3	
Quartz	3	3	
Lower Skull	2	3	
Osier	2	3	
Isabella	3	3	
Lochsa			
Lower Crooked Fork	1	1	Restoration priority 1 – to meet recovery goals in draft Snake River recovery plan for steelhead trout (NOAA), draft bull trout recovery plan (USFWS), and to secure habitat for bull trout and steelhead trout in the Lochsa subbasin, watersheds are well connected to existing population strongholds and have very high inherent potential. Restoration priority 2 – after priority 1s are restored in the subbasin. Restoration Priority 3 – need to be restored but at lower priority than 1s and 2s in other subbasins.
Spruce	3	3	
Lower Brushy Fork	2	1	
Upper Brushy Fork	2	2	
Legendary Bear	1	2	
Lochsa – Wendover	2	2	
Lochsa - Walton	3	3	
Fishing	1	1	

Appendix B—Priority Watersheds

6th HUC	Priority Within Subbasin	Priority Across Forest	Forestwide Rationale
Deadman	2	3	
Lochsa – Glade	2	3	
Canyon	2	3	
Pete King	2	3	
Lower Clearwater/Middle Fork Clearwater			
Upper Clear	1	1	Restoration priority 1 – to meet recovery goals in draft Snake River recovery plan for steelhead trout (NOAA), these subbasins do not currently have a population stronghold, restoration is a very high priority to conserve and restore Snake River steelhead in the Clearwater basin. Restoration priority 2 – Potlatch River restoration overall is a very high priority to meet recovery goals for Snake River steelhead, but FS administers only a small portion of this 5 th HUC, mostly at headwaters upstream of high potential spawning and rearing habitat. Restoration Priority 3 for Lower Clear – based on very low acreage administered by Forest.
South Fork Clear	2	2	
Lower Clear	3	3	
Upper Lolo	1	1	
Middle Lolo	1	1	
Musselshell	1	1	
Eldorado	1	2	
WF Upper Potlatch	2	2	
EF Potlatch River	2	2	
Potlatch River – Hog Mdws	2	2	
Corral	2	2	
Selway River – Lower (no potential population strongholds in Upper Selway)			
Selway River – Goddard	2	2	Restoration priority 1 – O’Hara Creek high inherent potential for steelhead trout, need a stronghold in the Lower Selway other than Meadow and Gedney to secure this very important subpopulation. Restoration priority 2 – lower inherent potential than O’Hara, many restoration opportunities however, which would improve mainstem conditions.
O’Hara	1	1	
Selway River – Rackcliffe	2	2	
Selway River - Glover	2	2	
South Fork Clearwater			
Meadow	2	3	Restoration Priority 1 – Upper Crooked River critical for adfluvial bull trout recovery in this subbasin; others are critical for recovery of anadromous fish spawning and rearing, very high inherent potential in Newsome, Red River, Crooked River, and Elk Creek for salmon and steelhead. Restoration is needed to meet goals identified in draft Snake River recovery plan for steelhead trout (NOAA). Restoration Priority 2 – still a high priority but not as high as Priority 1 in this subbasin and others Restoration Priority 3 – watersheds need to be restored but at a lower priority than 1s and 2s in other subbasins. In the case of Meadow and Mill Creeks, much aquatic restoration has occurred in the 2000s. Additional opportunities exist.
Mill	2	3	
Lower Johns	2	2	
Upper Crooked River	1	1	
Lower Crooked River	1	1	
Upper Newsome	1	1	
Lower Newsome	1	1	
Upper American River	2	2	
Lower American River	2	2	
East Fork American River	2	2	
Elk	1	2	

6th HUC	Priority Within Subbasin	Priority Across Forest	Forestwide Rationale
Lower Red River	2	1	
Upper Red River	1	1	
South Fork Red River	1	1	
Middle Red River	1	1	
Salmon – Lower Salmon, Lower Little Salmon, Middle Salmon - Chamberlain			
John Day	1	2	Restoration Priority 1 – highest priority on Forest for anadromous and resident fish in the Lower Salmon subbasin is Slate Creek, which has high inherent potential. SF White Bird tied to Little White Bird. Restoration Priority 2 – inherent potential less than Slate Creek, or less of the watershed is accessible due to natural barriers.
Upper Little Slate	1	1	
Middle/Lower Little Slate	1	1	
Lower Slate	1	1	
North Fork White Bird	1	2	
South Fork White Bird	1	1	

Appendix C—Lynx Analysis Units

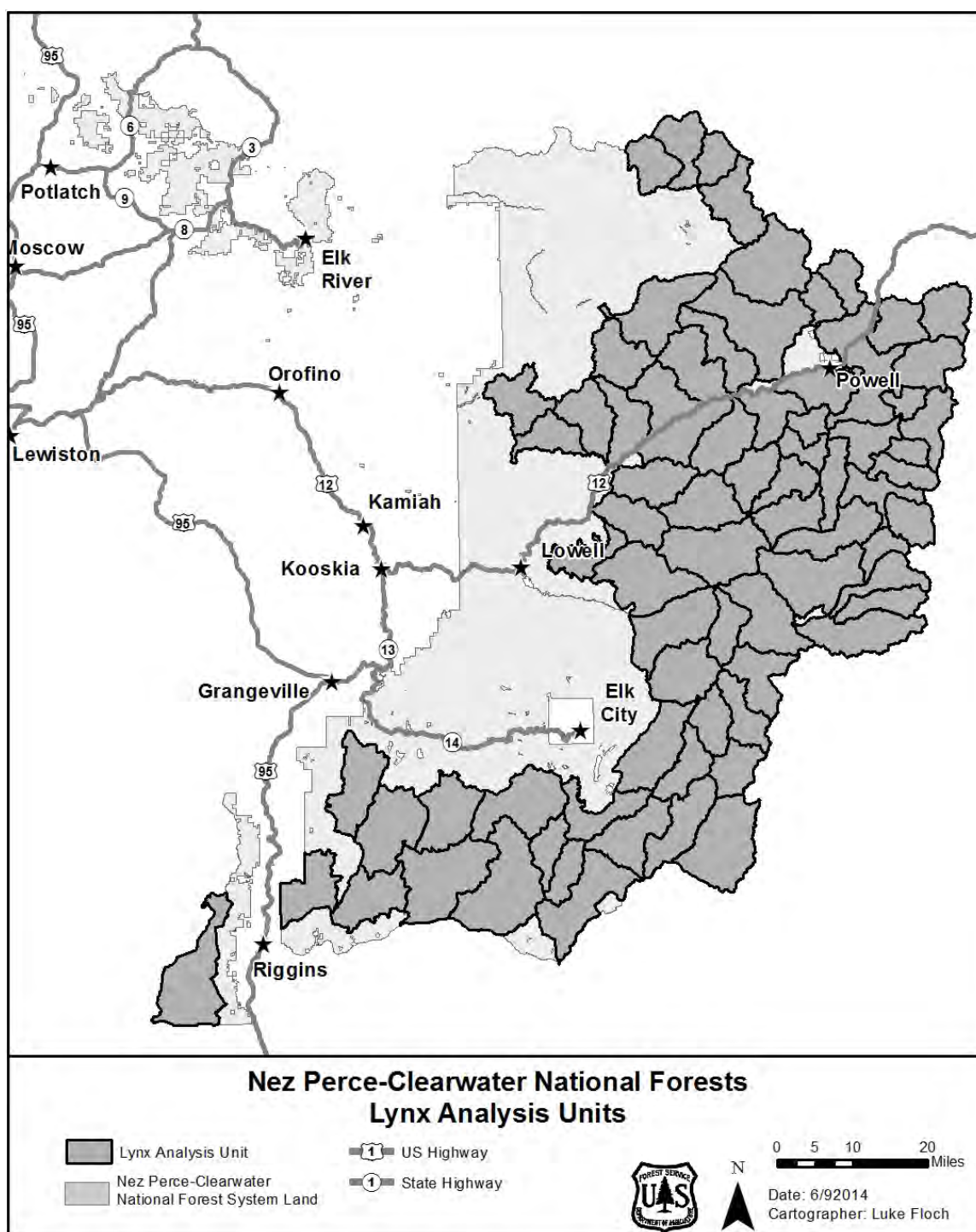


Figure 8. Proposed Remapping of Lynx Analysis Units on the Nez Perce-Clearwater National Forests (Large scale color map available online at: www.fs.usda.gov/main/nezperceclearwater)

The Nez Perce and Clearwater National Forests mapped lynx habitat per the Northern Rockies Lynx Management Direction and the Lynx Conservation Assessment and Strategy in 2004 and 2007, respectively. Using improved forestwide datasets, consistent mapping criteria, and updated

scientific information concerning lynx population dynamics, distribution, habitat use, competitor interactions, prey species, and human interactions, the Forest proposes to revise the forestwide lynx habitat mapping in association with forest plan revision. The proposed remapping effort resulted in 78 lynx analysis units based on the forest types necessary to support lynx survival and reproduction specific to each geographic area (Ruediger et al. 2000, Interagency Lynx Biology Team 2013). In northern and central Idaho this consists of subalpine fir, Engelmann spruce, and lodgepole pine potential vegetation types (Interagency Lynx Biology Team 2013).

Interagency Lynx Biology Team. 2013. Canada lynx conservation assessment and strategy. 3rd edition. Missoula, MT: USDA Forest Service, USDI Fish and Wildlife Service, USDI Bureau of Land management, and USDI National Park Service. Forest Service Publication R1-13-19.

Ruediger, B., J. Claar, S. Gniadek, B. Holt, L. Lewis, S. Mighton, B. Naney, G. Patton, T. Rinaldi, J. Trick, A. Vandehey, F. Wahl, N. Warren, D. Wenger, and A. Williamson. 2000. Canada lynx conservation assessment and strategy. Missoula, MT: USDA Forest Service, USDI Fish and Wildlife Service, USDI Bureau of Land Management, and USDI National Park Service. Forest Service Publication #R1-00-53. 142 p.

Appendix D—Scenic Integrity Objectives for Recreation Travel Corridors

Table 30. Road, Trail, and Recreation Use Area Scenic Sensitivity on the Lochsa/Powell Ranger Districts

ID	Name	Type	Scenic Sensitivity	Miles
Roads				
12	U.S. Highway 12	Road	1	71.0
104	Pierce Lochsa	Road	1	3.8
111	Elk Summit	Road	1	8.9
317	Coolwater Ridge	Road	1	4.7
358	Kooskooskia	Road	1	3.2
359	Colt Creek	Road	1	5.6
360	Savage Pass	Road	1	14.3
362	Tom Beal Park	Road	1	6.7
373	Paker Meadows	Road	1	1.1
500	Lolo Motorway	Road	1	64.7
5670	Pack Creek (To Glade Cr. Camp)	Road	1	1.3
107	Saddle Camp	Road	2	8.5
369	Beaver Ridge	Road	2	11.8
485	Boundary Peak	Road	2	7.4
569	Parachute Hill	Road	2	3.3
581	Toboggan Ridge	Road	2	11.1
Trails				
2	Lochsa Downriver	Trail	1	14.7
3	Cove Lakes	Trail	1	0.4
4	Big Sand Lake	Trail	1	2.3
6	Cedar Ridge	Trail	1	4.8
12	Liz Saddle	Trail	1	0.0
13	Lost Lake	Trail	1	2.5
14	Eldorado Creek Connector	Trail	1	2.5
20	Lower Weitas	Trail	2	0.0
22	Swamp Ridge	Trail	1	2.4
25	Lewis and Clark	Trail	1	27.4
28	Bridge Creek	Trail	1	4.9
35	Blacklead	Trail	1	18.1
40	Nee Me Poo	Trail	1	15.4
49	Warm Springs	Trail	1	2.0

Appendix D—Scenic Integrity Objectives for Recreation Travel Corridors

ID	Name	Type	Scenic Sensitivity	Miles
50	White Sand	Trail	1	10.8
63	Spruce Creek Lake	Trail	1	5.9
79	Sneakfoot Meadows	Trail	1	8.3
167	Bear Butte	Trail	1	3.8
206	Eagle Mountain	Trail	1	6.2
213	McConnel Mountain	Trail	1	5.1
216	Cliff Ridge	Trail	1	6.8
247	Gold Hill	Trail	1	6.7
252	Obia Point	Trail	2	3.3
255	Marten Creek	Trail	1	1.5
256	Gravey Creek	Trail	1	2.4
469	Mocus Point	Trail	1	4.4
486	Cedar - Moose Creek	Trail	1	5.7
508	Williams Peek	Trail	1	6.3
531	Windy Bill	Trail	2	1.9
532	Cayuse Trail	Trail	1	8.3
534	Lundy Rock Garden	Trail	1	4.9
539	Potato Creek	Trail	2	2.3
940	Rudd - Moore Lakes	Trail	1	4.2
2240	Lower Fish	Trail	1	17.4
Use Areas				
	Apgar	Campground	1	
	Austin Ridge	Lookout/Rental	3	
	Colgate Licks	Interpretive	1	
	Devoto Grove	Interpretive	1	
	Elk Summit	CG/Trailhead	1	
	Glade Creek	Campground	1	
	Hemlock Butte	Lookout	3	
	Jerry Johnson	Campground	1	
	Knife Edge	Campground	1	
	Lochsa Historical Ranger Station	Interpretive	1	
	Lochsa Lodge	Resort/SUP	1	
	Lolo Creek	Campground	1	
	Lolo Pass	Visitor Center	1	
	Musselshell Meadows	Interpretive	1	

ID	Name	Type	Scenic Sensitivity	Miles
	Musselshell Work Center	Administrative	1	
	Powell	Campground	1	
	Powell Ranger Station	Administrative	1	
	Three Devils	Picnic Area	1	
	Weitas	Guard Station	1	
	Weitas Butte	Lookout/Rental	2	
	Wendover	Campground	1	
	White Sand	Campground	1	
	Whitehouse	Campground	1	
	Wild Goose	Campground	1	
	Wilderness Gateway	Campground	1	

Table 31. Road, Trail, and Recreation Use Area Scenic Sensitivity on the Moose Creek Ranger District

ID	Name	Type	Scenic Sensitivity	Miles
Roads				
284	Elk City Wagon Road	Road	1	6.2
223	Selway River Road	Road	1	15.4
317	Coolwater Ridge	Road	1	10.3
319	Fog Mountain	Road	1	11.5
443	American River - Selway	Road	2	14.4
464	Boundary Ridge	Road	2	18.5
470	Swiftwater	Road	2	9.0
653	West Lodge	Road	2	6.4
1106	Sears Creek	Road	1	11.1
1842	Potato Hill	Road	2	1.0
9730	Cougar Ridge	Road	1	6.3
Trails				
3	Cove Lakes	Trail	1	9.2
4	Selway River	Trail	1	2.1
206	Eagle Mountain	Trail	1	2.7
334	Horse Point	Trail	2	8.3
335	Stillman Ridge	Trail	2	4.3
421	East Moose Creek	Trail	2	0.1
513	Spook Creek	Trail	1	0.0

ID	Name	Type	Scenic Sensitivity	Miles
517	Bild Mountain	Trail	1	1.0
602	Copper Butte	Trail	1	1.7
603	Indian Hill	Trail	2	4.2
609	Disgrace Butte	Trail	2	3.1
632	Prospect Ridge	Trail	1	3.9
703	East Boyd	Trail	1	4.9
704	Glover Trail	Trail	1	8.1
708	Gedney	Trail	1	10.5
713	O'Hara	Trail	1	7.6
715	Peterson Burn	Trail	2	1.1
726	Meadow Creek	Trail	1	21.2
835	Boundary	Trail	1	5.5
Use Areas				
	Boyd Creek	Campground	1	
	Fenn Pond	Fishing/Interp.	1	
	Fenn Ranger Station	Administrative	1	
	Glover Creek	Campground	1	
	Johnson Bar	Campground	1	
	Lookout Butte	Lookout Rental	2	
	Meadow Creek Cabin	Cabin Rental	1	
	O'Hara Bar	Campground	1	
	Rackcliff	Campground	1	
	Selway Falls	Campground	1	

Table 32. Road, Trail, and Recreation Use Area Scenic Sensitivity on the North Fork Ranger District

Name	Type	Scenic Sensitivity	Miles	Name
Roads				
104	Pierce Lochsa	Road	1	4.6
247	Beaver/North Fork	Road	1	22.3
250	Pierce Superior	Road	2	69.0
255	Deception Saddle	Road	1	11.0
295	Lake Creek	Road	2	6.7
500	Lolo Motorway	Road	1	23.5
557	Weitas Butte	Road	2	3.6

Appendix D—Scenic Integrity Objectives for Recreation Travel Corridors

Name	Type	Scenic Sensitivity	Miles	Name
581	Toboggan Ridge	Road	2	21.5
715	Pot Mountain	Road	2	11.9
720	Fly Hill	Road	2	18.3
Trails				
12	Liz Saddle	Trail	1	0.2
20	Lower Weitas	Trail	2	28.3
25	Lewis and Clark	Trail	1	4.7
40	Nee Me Poo	Trail	1	13.1
95	Isabella Creek	Trail	1	6.2
96	Elmer Creek	Trail	1	3.8
101	Indian Henry Ridge	Trail	2	7.6
103	Weitas Butte	Trail	2	5.0
104	Nee Me Poo	Trail	1	11.9
106	Junction	Trail	2	6.2
144	Pot Mountain	Trail	1	16.4
167	Bear Butte	Trail	1	18.7
169	Pot Mountain Ridge	Trail	1	13.1
176	Flat Mountain	Trail	1	7.4
191	Junction Mountain	Trail	2	12.9
233	East Dennis	Trail	1	7.2
240	Smith Ridge	Trail	1	5.5
283	Lost Ridge	Trail	2	8.6
285	Skull Creek	Trail	2	6.6
297	Aquarius - North Fork	Trail	1	4.9
373	Upper North Fork	Trail	1	11.3
396	Black Mountain	Trail	1	8.2
399	The Nub	Trail	1	10.3
414	Goose Creek	Trail	1	5.1
419	Fish Lake	Trail	1	5.7
419-A	Fish Lake Alternate	Trail	1	1.0
429	Osier Trail	Trail	1	4.9
445	Elisabeth Mountain	Trail	2	7.6
478	Pollack Mountain	Trail	1	11.2
490	Bruin Hill	Trail	1	12.8
508	Williams Peak	Trail	1	2.5

Appendix D—Scenic Integrity Objectives for Recreation Travel Corridors

Name	Type	Scenic Sensitivity	Miles	Name
513	Deer Creek	Trail	1	6.1
524	East Saddle	Trail	2	3.6
531	Windy Bill	Trail	2	11.2
532	Cayuse Creek	Trail	1	10.6
534	Lundy Rock Garden	Trail	1	7.7
565	Rapid Creek	Trail	1	4.0
567	Kelly Creek	Trail	1	20.9
580	Bugle Point	Trail	2	5.8
601	Clarke Mountain	Trail	2	3.4
602	Clarke Mountain Lookout	Trail	2	1.6
603	Elk Mountain Ridge	Trail	2	9.0
604	Elk - Clarke Contour	Trail	2	10.1
604-A	Gobbler's Knob	Trail	2	0.3
605	Cottonwood Creek	Trail	2	2.7
607	Morgan Gulch Overlook	Trail	2	0.7
649	Liz Butte	Trail	1	4.0
685	Black Lake	Trail	1	2.5
690	Moose Mountain	Trail	2	5.2
738	State Line	Trail	1	17.6
760	Little Moose Ridge	Trail	1	7.5
Use Areas				
	Aquarius-Purple Beach	Campground	1	
	Canyon Work Center	Administrative	1	
	Cedars	Campground	1	
	Hidden Creek	Campground	1	
	Kelly Forks Cabin	Cabin Rental	1	
	Kelly Forks	Campground	1	
	Kelly Forks Work Center	Administrative	1	
	Noe Creek	Campground	1	
	Washington Creek	Campground	1	
	Weitas Creek	Campground	1	

Table 33. Road, Trail, and Recreation Use Area Scenic Sensitivity on the Palouse Ranger District

Name	Type	Scenic Sensitivity	Miles	Name
Roads				
3	Idaho State Hwy 3	Road	2	4.5
6	Idaho State Hwy 6 (Scenic Hwy)	Road	1	5.2
8	Idaho State Hwy 8	Road	2	4.0
95	U.S. Highway 95	Road	1	20.0
377	Palouse Divide	Road	2	7.1
382	Elk Creek Basin	Road	2	13.2
767	NF Palouse River	Road	2	4.6
1452	Clover Leaf	Road	1	3.7
1452-B	Elk Creek Falls	Road	1	1.0
1963	Park Ranch	Road	2	1.5
4716	Skyline Drive (Mary Minerva SP)	Road	2	5.7
Trails				
26	Three Tree Butte	Trail	2	3.7
27	Excavation Gulch	Trail	2	2.2
221/221 A	Old Sampson	Trail	1	5.4
223	East Dennis	Trail	1	3.2
224/ 224 A - C	East Fork Meadow Creek NRT	Trail	1	8.0
228	Beason Mdws/Bald Mtn NRT	Trail	1	8.2
289	Brush Creek	Trail	2	2.3
319	Strychnine Ridge	Trail	2	4.2
330	Sand Mountain	Trail	2	10.2
330-A	Moose Creek Connection	Trail	2	0.6
333	Cleveland Gulch	Trail	2	1.8
740/ 740 A - F	Elk Creek Falls/All loops	Trail	1	1.9
747	West Fork Elk Creek Interp	Trail	1	4.9
748	Giant Cedar	Trail	1	0.4
749	Perkins Cedar Grove	Trail	1	0.6
750	Laird Park Loop	Trail	1	0.5
765	Potlatch Canyon	Trail	1	5.2
Use Areas				
	Bald Mountain Lookout	Lookout Rental	1	

	Elk Creek	Campground	1	
	Giant White Pine	Campground	1	
	Laird Park	Campground	1	
	Laird Park Picnic Area	Picnic Area	1	
	Laird Park Swim Area	Swimming Area	1	
	Little Boulder Creek	Campground	1	
	Little Boulder Creek Picnic Area	Picnic Area	1	
	Partridge Creek	Campground	1	

Table 34. Road, Trail, and Recreation Use Area Scenic Sensitivity on the Red River Ranger District

Name	Type	Scenic Sensitivity	Miles	Name
Roads				
14	Idaho State Highway 14	Road	1	15.8
222	Dixie	Road	1	48.7
233	Crooked River	Road	1	23.2
233C	Little Buffalo	Road	1	0.3
234	Red River	Road	1	7.9
284	Elk City Wagon	Road	1	6.7
285	Elk Mountain	Road	1	16.3
311	Orogrande Dixie	Road	2	4.2
421	Big Mallard	Road	2	14.5
443	American River - Selway	Road	2	10.4
464	Boundary Ridge	Road	2	18.0
466	Pilot Knob	Road	1	2.1
468	Nez Perce Trail	Road	1	34.4
471	Elk Summit	Road	1	5.2
492	Santiam Sourdough	Road	2	24.8
649	Silver Leggett	Road	2	8.9
1110	Center Star	Road	2	6.4
1166	Butter Creek	Road	2	4.8
1183	Blanco	Road	1	9.5
1188	Burpee	Road	2	10.0
1189	Siegel Hawk	Road	1	8.1
1190	Trapper Creek	Road	2	9.2
1199	Monroe Bear Creek	Road	2	10.1
1800	Sixty Six Creek	Road	1	14.6

Appendix D—Scenic Integrity Objectives for Recreation Travel Corridors

Name	Type	Scenic Sensitivity	Miles	Name
1803	Relief Creek	Road	2	17.8
1808	Indian Trail	Road	1	7.5
1809	Flatiron Ridge	Road	1	5.5
1810	Kirk's Fork	Road	1	6.3
1818	Mother Lode	Road	2	0.8
1858	Newsome Creek	Road	2	15.1
1866	Nellie Mountain	Road	2	2.1
1875	Blue Ridge	Road	2	9.0
9554	North Burpee	Road	2	2.7
9804	Baker Gulch	Road	2	4.7
9812	Flint Creek	Road	2	8.9
9822	French Gulch	Road	2	15.3
9824	Rainy Day	Road	1	6.3
9832	Red Horse Ridge	Road	2	2.9
9840	Middle Leggett	Road	2	4.5
9841	Upper Leggett	Road	2	3.9
9848	Circ Twins Mine	Road	2	3.0
9849	Orogrande Summit	Road	1	1.1
Trails				
96	Salmon River	Trail	1	26.4
204	Lake Creek	Trail	1	1.3
205	Columbia Ridge	Trail	1	1.6
206	Herman Creek	Trail	1	6.3
207	Moose Butte	Trail	2	8.4
212	Lemhi	Trail	1	8.3
222	Old Dixie Wagon Road	Trail	1	4.2
224	Indian Creek	Trail	1	4.3
230	Jumbo Canyon	Trail	1	1.2
234	Blowout Divide	Trail	1	3.1
235	Bear Lake	Trail	1	1.3
299	Crystal Lake	Trail	1	1.8
354	Johnson Saddle Stock	Trail	2	0.7
414	Twentymile Creek	Trail	1	2.6
415	Tenmile Creek	Trail	1	2.0
505	Divide	Trail	2	24.1

Name	Type	Scenic Sensitivity	Miles	Name
508	Porters	Trail	2	13.7
513	Spook Creek	Trail	1	3.5
517	Bilk Mountain	Trail	1	5.9
529	Archer	Trail	1	5.1
541	Green Mountain	Trail	1	8.0
581	Hot Springs Creek	Trail	2	4.5
672	West Fork Sable Creek	Trail	1	5.8
713	O'Hara	Trail	1	0.1
726	Meadow Creek	Trail	1	0.6
801	Umatilla Creek	Trail	2	3.5
805	Miners Ditch	Trail	2	11.2
830	Kirk's Fork	Trail	1	5.1
835	Boundary	Trail	1	4.5
881	Driveway Extension	Trail	1	7.1
1808	Indian	Trail	1	3.5
Use Areas				
	Bridge Creek	Campground	1	
	Ditch Creek	Campground	1	
	Jerry Walker Cabin	Cabin Rental	1	
	Poet Creek	Campground	1	
	Red River	Campground	1	
	Red River Ranger Station	Administrative	2	

Table 35. Road, Trail, and Recreation Use Area Scenic Sensitivity on the Salmon River Ranger District

Name	Type	Scenic Sensitivity	Miles	Name
Roads				
13	Idaho State Highway 13	Road	1	0.8
14	Idaho State Highway 14	Road	1	20.0
221	Grangeville Salmon	Road	1	54.7
235	Banner Ridge	Road	1	0.2
240	Maxim Ridge	Road	1	6.3
241	Bean Creek	Road	2	9.0
243	Free Use	Road	1	9.5
244	Lightning Creek	Road	1	19.5

Appendix D—Scenic Integrity Objectives for Recreation Travel Corridors

Name	Type	Scenic Sensitivity	Miles	Name
247	Cabin Creek	Road	1	2.6
279	Cover Placers	Road	2	15.3
284	Elk City Wagon Road	Road	1	5.6
354	Slate Creek	Road	2	12.3
394	Kelly Mountain	Road	1	16.2
410	Race Creek	Road	1	5.5
441	Nut Basin	Road	2	15.2
444	Gospel	Road	1	13.6
444B	Wilson Cow Camp	Road	1	0.1
444C	Slate Lake Camp	Road	1	1.8
444D1	Moore's South	Road	1	0.6
466	Pilot Knob	Road	1	2.2
492	Santiam Sourdough	Road	2	1.7
493	Deer Creek	Road	2	0.8
517	Seven Devils	Road	1	11.6
624	Whitebird Ridge	Road	1	7.1
642	Twin Cabins	Road	1	7.1
672	Crooked Road	Road	1	17.9
1105	Cougar Creek	Road	2	0.8
1106	Sears Creek	Road	1	8.9
1614	Salmon River	Road	1	4.9
1862	Trout Creek	Road	2	9.7
1866	Nellie Mountain	Road	2	7.2
1867	Surveyor Creek	Road	2	4.7
1875	Blue Ridge	Road	2	10.3
1876	Silver Dome	Road	1	3.8
2002	Van Buren	Road	2	8.9
2007	Chair Point	Road	1	4.4
2025	Skookumchuck	Road	1	10.8
2038	Waterspout	Road	2	11.8
2054	Iron Phone Connection	Road	2	1.4
2078	Upper Fiddle Creek	Road	2	4.3
Trails				
55	Cannon Ball Mountain	Trail	1	6.5
59	Rapid River	Trail	1	3.5

Appendix D—Scenic Integrity Objectives for Recreation Travel Corridors

Name	Type	Scenic Sensitivity	Miles	Name
60	Potter	Trail	1	3.9
62	Dog Ridge	Trail	1	2.7
64	Alder Spring	Trail	1	1.2
65	Sampson Spring	Trail	1	3.4
71	Oxbow	Trail	1	6.9
96	Salmon River	Trail	1	0.1
111	Morrison Ridge	Trail	1	1.6
113	West Fork Rapid River	Trail	1	10.4
134	North	Trail	1	6.7
309	Little Slate	Trail	1	11.1
310	Round Top	Trail	1	5.7
313	Hump	Trail	1	1.9
319	Doc Denny	Trail	1	2.7
320	North Fork Slate Creek	Trail	2	7.4
322	Boundary Bufford	Trail	2	6.4
324	Timbered Bench	Trail	2	6.9
328	Marble Point	Trail	1	7.4
330	Little Van Buren Creek	Trail	1	4.9
383	Square Mountain	Trail	1	1.0
401	Frank Brown	Trail	1	9.7
407	Snoose Creek	Trail	1	10.6
410	Rainbold Ridge	Trail	1	5.2
431	Driveway	Trail	1	12.5
476	Silver Creek Head	Trail	2	2.8
478	Blue Ridge	Trail	1	3.2
881	Driveway Extension	Trail	1	1.7
312-1	Moore	Trail	1	0.6
Use Areas				
	Adams Ranger Station	Cabin Rental	1	
	Allison Creek	Picnic Area	1	
	Blackberry	Picnic Area	1	
	Carey Creek Boat Launch	River Access	1	
	Castle Creek	Campground	1	
	Fish Creek	Campground	1	
	Fish Creek	Group	1	

Appendix D—Scenic Integrity Objectives for Recreation Travel Corridors

Name	Type	Scenic Sensitivity	Miles	Name
		Campground		
	Meadow Creek	Campground	1	
	Rapid River	Trailhead	1	
	South Fork	Campground	1	
	Spring Bar	CG/River Access	1	
	Vinegar Creek	River Access	1	
	Wind River	Trailhead	1	

Appendix E – Possible Actions and Management Approaches

Possible actions and management approaches are those actions that the Forest anticipates may occur over the life of the plan; describing the variety of multiple use opportunities or resource management programs that the Forest expects to provide. They are presented as a brief summary of the types of activities that may occur to maintain or move the forests toward desired conditions. Because the plan is a strategic document that provides general management guidance, the items listed include approaches anticipated to occur over the life of the plan.

The list is not meant to be all-inclusive, nor is it intended to represent agency decisions. It includes projections of what actions or management approaches that may take place in the future in program areas that constitute the typical annual program of work for the Forest. A plan amendment is not required to change or modify any of the possible actions and management approaches. This list may be updated at any time through an administrative correction of the plan.

Vegetation Management

Vegetation management includes those activities that actively move vegetation towards desired conditions. Generally, the following types of actions are likely to occur:

- Thinning stands to maintain or improve forest health and trend towards historic densities, composition, and structure
- Regeneration timber harvest using a variety of silvicultural prescriptions
- Planting blister rust resistant white pine
- Pruning of white pine to reduce vulnerability to blister rust fungus
- Planting shade-intolerant, fire-adapted, drought-resistant species
- Management of stands to retain or move towards old forest characteristics
- Management of meadow habitats for culturally significant native plants
- Treating invasive species
- Treating insects and disease using integrated pest management techniques.

Table 36 and Table 37 describe management approaches that may be considered during project planning to improve ecosystem resiliency for various conifer species across biophysical settings.

Table 36. Species-specific Management Approaches to Consider During Project Planning

Species	Options
Ponderosa pine	Reduction of forest density in all successional stages
	Consideration for opportunities to plant ponderosa pine after regeneration harvests or wildfire
	Goals of no more than 100 established (>5 years old) trees per acre when planting on winter ranges in order to encourage long-term browse production
Douglas-fir	On north aspect breaklands and all upland and subalpine sites, after regeneration harvests or wildfire—regeneration of western white pine, ponderosa pine, and larch where they occurred historically to reduce impacts of root disease on Douglas-fir
	Maintenance of lower forest density during all stages of succession in order to improve resiliency to potential climate change

Species	Options
Grand fir	On north aspect breaklands, and all upland and subalpine sites, after regeneration harvests or wildfire—regeneration of western white pine, ponderosa pine, and larch where they occurred historically to reduce impacts of root disease in grand fir
Western Redcedar	Project planning to only encourage western redcedar on the moistest of the cedar and western hemlock habitat types in order to improve resiliency to potential climate change
Western Hemlock	On north aspect breaklands, and all upland and subalpine sites, after regeneration harvests or wildfire—regeneration of western white pine, ponderosa pine, and larch where they occurred historically to reduce impacts of root disease in western hemlock
White pine	Project planning to aggressively plant rust-resistant white pine after regeneration harvests or wildfire on moist western redcedar and western hemlock habitat types
	Thinning and pruning of young stands to favor white pine in order to maintain white pine
Whitebark pine	Consideration to plant rust resistant stock in areas of limited seed source as opportunities arise
	Use of wildland fire as opportunities arise for restoration of white bark pine successional stage patterns and for natural regeneration where selection pressure with white pine blister rust has resulted in resistant seed producers
Spruce	Consideration of the potential effects of a warming climate to favor spruce through harvest methods and/or reforestation choices on northerly aspects and more moist sites
Subalpine fir	Consideration of the potential effects of a warming climate to favor subalpine fir through harvest methods and/or reforestation choices on northerly aspects and more moist sites
Larch	Consideration of the potential effects of a warming climate to favor western larch through harvest methods and/or reforestation choices on cooler and more moist sites
	Management of forest density to favor larch during all successional stages in order to maintain established larch
Mountain hemlock	Consideration of the potential effects of a warming climate to favor mountain hemlock through harvest methods and/or reforestation choices on northerly aspects and more moist sites
Lodgepole	Management for landscape heterogeneity of pattern of successional stages

Table 37. Management Approaches to Consider During Project Planning to Improve Ecosystem Resiliency across Biophysical Settings

Species	Options
Breaklands	Retention of scattered large, old ponderosa pine where they are found, and/or the regeneration of additional ponderosa pine encouraged where it has been lost
	Restoration of open, single-storied ponderosa pine forest structure
	Restoration of size class distributions on northerly aspects through reduction of large and medium tree size classes and increases in the small tree size class and the seral shrub component
	Increases in seral grasses and shrubs on southerly aspects, primarily through reduction of tree density and fire use to reinvigorate decadent shrubs and grasses
	On northerly aspects, emphasis on decreasing grand fir or cedar dominance while increasing shade-intolerant species such as western white pine, ponderosa pine, western larch, and Douglas-fir

Species	Options
	Planting of or planning for natural regeneration of western white pine, ponderosa pine, Douglas-fir, or western larch where appropriate, and culturing with fire or mechanical methods to encourage the development of large trees with single- or two-storied stand structure
Uplands	Planned disturbances produce larger patches of seral shrubs and the small tree size class
	Planting of or planning for natural regeneration of seral species, particularly western white pine, ponderosa pine, and western larch, where appropriate
	Reduction of grand fir and cedar dominance
	Increases of large and small tree size classes, as well as seral shrubs, with decreases in middle tree size class
	Reduction of stand densities favoring shade-intolerant species, generally old ponderosa pine, western larch, and western white pine, in addition to western redcedar and grand fir where needed to meet desired conditions
	Treatments designs to encourage development of large trees with single- or two-storied stand structure
Subalpine	Reestablishment of whitebark pine killed by mountain pine beetle or white pine blister rust as opportunities arise on appropriate sites
	Encouragement of western larch and Douglas-fir on moderate subalpine sites to increase fire-resistance and resilience and promote forest diversity
	Reduction of subalpine fir, Engelmann spruce, and mountain hemlock dominance to reduce fire susceptibility and promote forest diversity

Fire Management

- Mechanical fuels reduction treatments, including commercial timber sales and noncommercial treatments in the wildland urban interface and municipal watersheds
- Planned ignitions
- Unplanned ignitions
- Consideration of public and firefighter safety as the highest priority in fire management decisions
- Determination of manageable levels of risk to provide for safety and achievement of wildland fire objectives, through comprehensive and systematic risk management processes
- Consideration of effects to the habitat of at-risk species during fireline construction through avoidance when practicable

Watershed, Riparian Habitat, Aquatic Species, and Soils

- Consultation and management coordination with the Tribe, the State, and other agencies to review aquatic habitat, fisheries, address aquatic and fisheries concerns

- Active stream restoration actions at selected stream reaches to improve degraded conditions and stream channel stability
- Construction of instream structures to stabilize channels and improve aquatic habitat
- Riparian vegetation planting for bank stability and shade
- Invasive species treatment in riparian and upland areas to improve community structure
- Removal, reconstruction, or improved maintenance of roads located in riparian areas to improve watershed health and reduce sediment delivery to the aquatic ecosystem
- Removal, reconstruction, or improved maintenance of roads and log processing facilities located in upland areas to improve watershed health and improve soil functions
- Upland road maintenance and reconstruction to reduce water interception and reduce landslide risk
- Culvert replacement or removal to improve passage for native species and/or to improve hydrologic function and sediment transport
- Riparian area fencing
- Reclamation of abandoned mines and rehabilitation of disturbed sites
- Completion of status assessments for water quality limited streams in cooperation with Idaho Department of Environmental Quality through water quality assessments, total maximum daily loads, restoration plans, best management practices implementation, and monitoring
- Obtainment of state water rights to support instream flows that provide for channel maintenance, water quality, aquatic habitats, riparian vegetation, and recreation
- Identification, description, and mapping of groundwater dependent ecosystems using agency protocols; including locations, ecological values and degrees of dependence on groundwater
- Inventory and decommissioning prioritization of abandoned drinking wells and mineral exploration bore holes
- Development of transportation and recreation facility plans within municipal watersheds to provide access for vegetation management, recreation, and fire suppression, while protecting water quality

Botanical Species

- Surveys of potential habitat for at-risk and culturally important botanical species
- Development of an annual Integrated Pest Management (IPM) strategy for the management of invasive weeds; including prevention, inventory, treatment, monitoring, and restoration
- Implementation of fencing, avoidance, monitoring, or other strategies to protect occurrence of at-risk species as determined by the unit botanists during project planning

Wildlife

- Establishment and maintenance of the vegetation diversity necessary to provide food, cover, and security for wildlife in cooperation with federal, state, and other organization through timber harvest, prescribed burning, other silvicultural treatments, and access management
- Surveys of suitable and potential habitat of at-risk species
- Education and interpretation of species conservation needs such as reducing attractants to minimize human/wildlife conflicts or preventing spread of white-nosed syndrome within bat populations

Recreation

Recreation management includes those activities that assist in providing a range of recreation opportunities across the Forest. This may include controlling visitor impacts to resources and other visitors; constructing and maintaining facilities and trails; and providing a positive visitor experience. Generally, the following types of actions are likely to occur:

- Trail maintenance; relocation, reconstruction and construction of new trails when needed
- Maintenance and upgrades to facilities such as rental cabins and lookouts, campgrounds, picnic areas, toilets, and parking lots
- Construction of new facilities such as parking areas, toilets, trailheads, information kiosks, fishing access, and boating access points
- Inventories, maintenance, and modifications of impacted dispersed recreation sites to reduce or eliminate resource concerns. Including an assessment of routes accessing dispersed recreation sites located farther than 300 feet from designated roads and trails for potential designation or restoration
- Completion of travel management planning for the production of the Nez Perce MVUM; updates to the Clearwater MVUM
- Assessment and development of groomed over-snow motor vehicle routes and cross-country ski and snowshoe routes
- Completion of an historic preservation plan for the Lolo Trail National Historic Landmark corridor, including the Lewis and Clark and the Nez Perce National Historic Trail segments
- Updates to, and implementation of, the Lewis and Clark National Historic Trail Comprehensive Management Plan (Nez Perce-Clearwater NFs segments), in coordination with the USDI National Park Service
- Updates to, and implementation of, the Nez Perce National Historic Trail Comprehensive Management Plan (Nez Perce-Clearwater NFs segments)
- Support of nomination efforts for the South Nez Perce Trail's and Elk City Wagon Road's inclusion in the National Historic Trail System
- Development and updating of recreation corridor plans

- Completion of a needs analysis (and issues a prospectus if needed) assessing needs for cultural interpretation, fishing, and other seasonal recreation outfitter opportunities
- Provision of special use permits for commercial recreation opportunities (e.g., resorts, ski areas, outfitter and guides, special events)
- Development of a forestwide interpretive and conservation education plan identifying interpretation and educational opportunities for public enjoyment

Cultural Resources

- Continued management of traditional use areas through development of management plans for ongoing consultation through a cooperatively established communication policy
- Cooperative establishment of a policy for continued access to and acquisition of forest products for each federally recognized tribe with historical or treaty interest for cultural uses
- Ongoing government-to-government and staff consultation for each federally recognized tribe with historical or treaty interests in forest land, through a cooperatively established communication policy
- Preservation, stabilization, rehabilitation, and restoration of cultural resources
- Inventory and evaluation of cultural resources, and nomination (if appropriate) to the National Register of Historic Places
- Completion of historic preservation plans
- Maintenance to historic facilities
- Promotion of heritage values through public education, outreach, and interpretative programs
- Scientific and historic heritage research
- Historic building evaluations for those buildings older than 50 years of age, but identified as not needed for future use

Infrastructure

For the transportation system:

- Annual and deferred road maintenance for public and administrative access (e.g., clearing, grading, brushing, providing functioning water structures) and improvements (e.g.,)
- Road reconstruction (e.g., BMP work, realignment, resurfacing, and bridge and water drainage structure installation, repairs and replacements)
- Temporary road construction
- Putting roads into ‘intermittent stored service’
- Road decommissioning
- Emergency repairs caused by natural events

- Review, update, and public notification of airstrip management plans

For administrative facilities:

- Annual maintenance
- Deferred maintenance
- Improvements to meet health and safety requirements
- Improvements to reduce operation and maintenance costs (increase energy efficiency)
- Emergency repairs caused by natural events
- Building decommissioning

Lands

- Landlines maintenance
- Inventory and assessment of NFS lands to determine existing and future access needs
- Adjustment of NFS ownership through donations, purchases, conveyances, and/or land exchanges
- Provision of special use permits for land uses such as research studies, power lines, and communications sites
- Acquisition and granting of access easements
- Completion of communication site plans

Timber

Timber management is used to move vegetation towards desired condition, to reduce fuels, and to provide a sustainable mix of timber products (including both sawtimber and non-sawtimber) under a variety of harvest and contract methods in response to market demand.

Activities for timber management generally include the following:

- Intermediate timber harvest (commercial thinning, improvement cutting, etc.)
- Regeneration harvest with treatments that are even-age in nature (clearcut, or two-age regeneration), or uneven-age (group selection or single tree selection)
- Salvage of dead or dying timber

Energy and Minerals

- Mineral materials development
- Abandoned mine reclamation
- Locatable and leasable minerals exploration and development
- Establishment of information source in areas suitable for saleable mineral sales
- Review and updates of reclamation bonds for mineral operations to reflect current costs

Grazing

- Permitting livestock grazing where compatible with management area suitability
- Completion and/or updates of grazing allotment management plans (AMP) per the 1995 Rescissions Act schedule for allotment review.
- Completion of annual operating instructions for each grazing allotment prior to the authorized livestock entry date.
- Construction and maintenance of range improvements (fences and water developments) by either the permittee or the Forest Service in compliance with standards described in FSH 2209.13.

Special Forest Products

- Gathering of firewood, huckleberries, and other special forest products

Wilderness

- Review and update of Wilderness management plans to include:
 - Cultural resource management and protection plans for historic wilderness structures and facilities
 - Schedules for identifying nonconforming management activities and practices with associated rehabilitation schedules
 - Weed management direction
 - Fire management direction
 - An identification and management strategy for all existing Wilderness access portals, including season of use and maintenance levels and schedules for roads, trails, and trailheads
 - An identification and management strategy for backcountry airstrips and trail management including structure management (e.g., bridges, culverts)
- Coordination of management activities for the co-managed Selway-Bitterroot, Frank Church—River of No Return, and Hells Canyon wilderness areas
- Public education and interpretation for Wilderness values and ethics, including no-trace camping practices

Wild and Scenic Rivers

- Update and revision of the Middle Fork Clearwater River System CRMP
- Development of monitoring and/or improvement strategies for eligible streams that are also identified by the state as impaired
- Updates and decisions for the existing suitability studies on:
 - White Sand Creek and a Two-Mile Segment of the Upper Lochsa

- Three Rivers in the North Fork Clearwater River Drainage (A portion of the North Fork Clearwater, Kelly Creek, and Cayuse Creek)
- Fifteen Tributaries of the Upper Selway River (Running, Bear, Brushy Fork, Wahoo, Cub Paradise, Moose, East Fork Moose, West Fork Moose, North Fork Moose, Rhoda, Three links, West Fork Three links, Gedney and West Fork Gedney creeks)

Research Natural Areas

- Establishment of RNAs for regional priority vegetation types and other desired unique ecological features or elements
- Completion of establishment of Rhodes Peak and Fenn Mountain RNAs
- Expansion of the Bull Run RNA
- Boundary adjustment of the Lochsa RNA

Appendix F – Partnership Opportunities

Cooperative programs, such as agreements, activities, grants, volunteers, and partnerships, with federal, state, and country agencies, tribes, other governmental organizations, and individuals, are important tools to help the Forest achieve desired conditions and improve overall resource management. The following table, although not exhaustive, presents opportunities forest managers can consider during project planning and implementation.

Table 38. Partnership Opportunities

Organization	Opportunities
Nez Perce Tribe	In addition to project-level consultation requirements, partnership and coordination opportunities with the Nez Perce Tribe provide support for resources such as fish and wildlife habitat improvement, watershed restoration, cultural plants, the evaluation and management of historic properties, and fisheries management.
Cooperative Weed Management Areas	Recommendations submitted by the CWMAs could be used to aid the Forest in determining weed management priorities, projects, budgets, and annual programs. Cooperative agreements with the CWMAs could facilitate public weed awareness promotion through brochures, displays, and forums.
Fish, Wildlife, and Plant Conservation Agencies and Organizations or Academic Institutions	Participation with recovery committee's such as the Spalding's Catchfly Recovery Committee and others is an important role for the Forest to play in the recovery of federally listed species. Partnerships with the Nez Perce Tribe, the Idaho Department of Fish and Game, County Soil and Water Conservation Districts, academic institutes, or other non-governmental organizations may provide additional staffing and funding for monitoring and species-specific data gathering. Partnerships may assist in identifying potential RNAs and gathering information that contributes to establishment reports.
Idaho State Historical Society, the Historic Preservation Office, and Tribes	Local preservation partnerships with groups such as the Nez Perce National Historic Trail Foundation and the Lewis and Clark Trail Heritage Foundation can be used to coordinate cultural resource activities, promote stewardship projects, and enhance interpretation and tourism opportunities.
Other Land/Road Management Agencies	Partnerships with Idaho Department of Parks and Recreation, Idaho Department of Lands, Idaho Transportation Department, large private landowners, and county road districts can be used to implement projects that occur on mixed ownerships and/or jurisdictions.
Non-governmental organizations and labor forces	Partnerships with groups such as the Palouse-Clearwater Environmental Institute, Northwest Youth Corps, Student Conservation Association, Great Burn Study Group, Selway Bitterroot Frank Church Foundation, Montana Conservation Corps, and other youth corps, as well as agencies such as Idaho Department of Labor and Idaho Department of Corrections, can provide cost effective labor in exchange for job training and educational opportunities.

☐ IDAPA RULE ☐ IDAPA FEE ☐ BOARD ACTION REQUIRED
☐ BOARD POLICY **X** INFO ONLY, NO ACTION REQUIRED

AGENDA
Idaho Park and Recreation Board Meeting
August 26-28, 2014
Red Lion Canyon Springs
Twin Falls ID

AGENDA ITEM: **IDPR Participation on Federal Land Management Planning**
ACTION REQUIRED: **Discussion**
PRESENTER: **Randy Doman**

PRESENTATION

BACKGROUND INFORMATION:

Discuss levels of proactive management with Federal Land Management Planning

STAFF RECOMMENDATIONS:

No staff recommendations.

☐ IDAPA RULE ☐ IDAPA FEE ☐ BOARD ACTION REQUIRED
☐ BOARD POLICY **X** INFO ONLY, NO ACTION REQUIRED

AGENDA
Idaho Park and Recreation Board Meeting
August 26-28, 2014
Red Lion Canyon Springs
Twin Falls ID

AGENDA ITEM: **Staff Reports**
ACTION REQUIRED: **Information Only**
PRESENTER: **Director Langhorst**

PRESENTATION

BACKGROUND INFORMATION:

Director will give an update. All staff reports are written for the Board's perusal.

STAFF RECOMMENDATIONS:

No staff recommendations.

OPERATIONS DIVISION QUARTERLY REPORT
APRIL – MAY- JUNE 2014

OPERATIONS DIVISION: KEITH HOBBS, ADMINISTRATOR

Mission

To improve the quality of life in Idaho through outdoor recreation and resource stewardship.

Goals

1. To provide leadership and direction for the ongoing daily operations of Idaho State Parks and the IDPR Recreation Bureau.
2. To leverage existing resources to provide staff with the necessary tools to accomplish the mission of the Idaho Department of Parks and Recreation.

Administrator's Report

- Completed and submitted Performance Evaluations for all direct reports to the Operations Division Administrator and ensured the same was performed for all Parks and Recreation staff.
- Worked with JUB of Twin Falls to develop required survey of the Billingsley Creek Vardis Fisher property, in order to allow for the sale of the property to the Idaho Water Resources Board. At the time of this writing, the last details concerning the development of an easement to the spring source have been concluded, allowing for the survey to be completed.
- Was awarded \$80,000 from the Recreational Vehicle Account for the purchase of multiple picnic tables and fire rings for use in Idaho State Parks. Currently working with IDPR Purchasing Officer to order equipment for use in parks across the state.
- Continued discussions with the Boise National Forest on the proposed Becker Restoration Project and its potential adverse impacts upon the Idaho City Yurt Program. Two potential road closures would significantly impact access to two of the program's yurts, thus limiting usage and diminishing revenue.
- Conducted on-site discussions with the Idaho Fish and Game concerning IDPR taking the management role in the operation of Idaho Fish and Game campgrounds around Horsethief Reservoir. IDPR and IDFG staff reviewed the existing operation, needed development, visitation numbers, and design of a cooperative management agreement. No further action has been pursued at this time.
- Met with the City of Glenn's Ferry and airport managers to discuss the possible creation of an easement on Three Island Crossing State Park in order to allow an expanded safety zone for the adjacent airport. Accomplishment would require the relocation of an access road on the park's western boundary and the installation of a chain link fence to exclude

use. The success of the project is complicated by 6f boundaries around Three Island Crossing, which precludes removal of the property from recreational use.

- Attended IDPR field staff Compliance Enforcement Officer and Reservation Program training.
- Provided support for IDPR Recreation Bureau staff in acquiring the required county permits to re-open the ATV Training Course at the Boise Headquarters. Recreation Bureau staff worked with county representatives and HQ adjacent property owners and ultimately the Ada County Planning and Zoning Board unanimously approved the permit request.
- Participated as an Objector at the Panhandle and Kootenai National Forest's Forest Plan Revision Meeting in Couer d'Alene. Presented IDPR's position that the proposed revision eliminates significant established and compatible motorized use through the establishment of Proposed Wilderness Areas without sufficient review or supporting data.
- Worked with Region Managers and IDPR Fiscal Officer to establish FY15 seasonal and operation allocations for parks. FY15 allocations provided additional seasonal support for parks and operating support for select parks whose fixed costs expenditures demonstrated appropriate need.
- Conducted on-site visits with park staff at Round Lake, Hells Gate, Three Island Crossing, Bruneau Dunes, Lake Cascade, and Dworshak to review current park operations, gather information on park needs, and enhance relationships between IDPR field and headquarters staff.
- Finalized park budget requests for FY16 and submitted to fiscal.
- Began gathering information and making contacts for an Idaho State Parks Economic Impact Study. Held discussions with three university representatives (Boise State University, Washington State University, Michigan State University) to determine what information is required for such reports, what costs will be associated, what responsibilities would fall to IDPR, and to discuss time requirements.
- Participated in discussions with the IDPR Development Bureau and the Eagle Sewer District to develop a strategy for the installation of the new sewer system at Eagle Island State Park which would service Eagle Island State Park and neighboring homes.
- Provided supplemental support to parks in need of assistance at the fiscal year's end due to emergencies, unanticipated expenditure needs, or inadequate budget allocations.
- Attended the Rocky Mountain State Parks Executive Conference in Coeur d'Alene, Idaho, and discussed current challenges being addressed by regional state park systems and ongoing work towards their resolution.
- Met with Mike Roach, Natural Resource Director for Senator Risch, to discuss federal issues affecting statewide recreation efforts in Idaho, including forest planning, the reduction of dedicated forest service recreation staff, and the budget impact of wildland fire suppression on one of IDPR's primary federal recreation partners, the US Forest Service.

**NORTH REGION QUARTERLY REPORT
APRIL – MAY – JUNE 2013**

MISSION:

To serve north Idaho park users and recreationists providing them a quality experience that is safe and enjoyable while managing and protecting the public's investment and the natural resources.

GOALS:

- Ensure that all facilities are kept clean and hazard free.
- Utilize both paid and volunteer staff to man visitor centers and entrance booths to answer questions and sell park permits.
- Patrol parks ensuring user needs, user safety, and resource protection.
- Assess operations and opportunities to ensure quality experiences are provided and enhanced.

Primary Issues and Concerns

1. Staff Shortages
2. Minimal budgets, increased fixed costs, and higher use
3. Aging facilities and equipment

NORTH REGION SERVICE CENTER – DAVID WHITE, REGION MANAGER

TOC Commission Bi-Annual Meeting;

RMSPEC 2014 Planning Team Meetings;

Round Lake Water/Wastewater meeting with DEQ, PHD, Welch-Comer and staff;

Hosted and participated in NR CEO Refresher Training; RMSPEC 2014 and NR Spring Meeting

Participated in ITD's CdA Lake Drive Management Plan Consultant Selection process/meeting;

Participated in Hells Gate Ranger, Winchester State Park Assistant Manager, OM, Dworshak Ranger and IDPR Planner interviews;

Assessed onsite the Heyburn Appraisal Appeals with Ron Hise

Attended CdA Chamber of Commerce Natural Resource Meeting;

Hosted Spring Board Meeting in Lewiston at Hells Gate State Park touring both Hells Gate and Winchester.

Met with or talked to Nancy Merrill; Rick Just, Friends of Idaho State Parks; Garth Taylor; several north and south Park Managers; Dave Claycomb; Katie Brodie, Northern Idaho Governor's Field Representative; and Sandra Mitchell, IRC to discuss the Director's position and Department as part of applying for the position.

Met with Tom Joyner prior to his retirement to discuss project status

Met with Dworshak house boat moorage buoy lessees, COE and County Commissioner to discuss status and future of moorage buoys

NR MAINTENANCE CREW

Along with many spring projects the crew did various park and program projects throughout the quarter focusing on:

- Boating Department: Life Jacket Kiosks
- Priest Lake: Delivered North Region's old back-hoe; Graded all the roads; Constructed new two-room cabin at Indian Creek campground
- Round Lake: Delivered sign stanchions
- Farragut: Installed swing set
- Parkway: Replaced floats on docks at Higgins Point boat ramp
- Old Mission: Resale area remodel; Repair water damage from leaking vault
- Heyburn: Installed culvert on Chatcolet Road near cabin; Delivered dozer to horse riding area

- Dworshak: Laid out a plan for volunteer sites
- North Region Office/Shop: Built plaques and set up for RMSPEC conference
- Various Parks: Signs

NR OFFICE STAFF

- Coordinated CEO Refresher
- Coordinated and hosted RMSPEC 2014
- Coordinated NR Spring Meeting
- Closed out fiscal year end responsibilities

PRIEST LAKE STATE PARK – LONNIE JOHNSON, PARK MANAGER

Top 5 Items Not Being Addressed or Funded At This Time

1. Not having park housing for all permanent staff.
2. It is becoming more difficult to adjust time during holidays - EAL worries.

Customer Service

- Store has new merchandise, newly painted floors and cabinets
- All campgrounds open and ready for the summer season
- Held annual Emergency Services meeting May 9 at Indian Creek
- Boy Scout troop installed 7 more bear-proof food-storage lockers: 1 at Dickensheet, 2 at Indian Creek, and 4 at Lionhead on May 17-18.
- Many hazardous trees removed from Indian Creek and Lionhead campgrounds
- New site constructed at Dickensheet to replace old one
- Purchased 4 kayaks for rental

Utilization of Facilities

- Lake thawed out April 1
- Fishing is excellent
- Cabins reserved full for July and August
- Group camp reserved full through September

Park Manager's Report

- Annual and five-year fire suppression inspection done at Indian Creek office.
- New hot-water heater installed in CXT restroom
- Trained all seasonal staff in First Aid/CPR

Preservation of Natural Resources

- Worked with Natural Resource Manager and Lands on wind storm damage cleanup for direct log sale.

Marketing: Strategy Proposals and Marketing Strategies

- Looking into acquiring new disc golf course at Indian Creek unit.

ROUND LAKE STATE PARK – CHUCK GROSS, PARK MANAGER

Top 5 Items Not Being Addressed or Funded At This Time

1. Additional Staffing, including an Office Specialist
2. Vehicle and equipment replacement
3. Adequate funding to properly develop our newly acquired acre of property.
4. Funding to build defined living pads in all 51 campsites to help protect the resource and allow regrowth of understory
5. An increase in the Parks O&E budget to properly address inflationary increases on fixed costs and increased costs of maintenance of depreciating equipment.

Customer Service

- Rental canoes, standup paddleboards, and paddleboats were made available to the public over Memorial Day weekend and for the remainder of the summer.
- The park hosted two-hours-worth of tours for the RMSPEC conference in the middle of May. Approximately 30 self-interpretive signs were installed on the Stewardship trail.
- The campgrounds' use increased to near-full every day by the end of June.
- The park accommodated a week of field trips by local schools – which included staffing the Visitor Center for tours through the Interpretive Area.

Utilization of Facilities

- The Lower Loop campground remained closed in April to allow for resource work.
- Camping increased due to the relatively dry weather, culminating in a completely full campground over Memorial Day Weekend. Fishing increases coincided with IDFG stocking of Rainbow Trout, with reports of many successful catches and limiting out.
- The east-end trails around the lake opened after floodwaters receded.
- Day use areas, docks, and the beach had heavy use—especially on the weekends.

Park Manager's Report

- Staff attended the annual required CEO refresher for three days in April.
- The annual LSAS Sewer report was submitted to Panhandle Health outlining plans to repair or replace a faulty check valve that was showing elevated numbers above allowable limits.
- Staff conducted interviews after having to announce for help wanted at Job Service due to last minute departures of already hired seasonal staff
- Staff continued participation in meetings for the RMSPEC conference planning committee
- Park staff attended the Spring North Region Meeting
- Perform monthly coliform testing for water as well as daily reading of chlorine and water
- The park manager attended an initial meeting at Welch Comer outlining plans for the upcoming well relocation in FY15.
- Seasonal staff bundled over 1,000 bundles of wood for resale.
- A contractor from RC Worst consulted and confirmed the faulty check valve at the drain-field that is causing erroneous hour-meter readings.

Preservation of Natural Resources

- The park contracted out for and felled a high-risk hazard tree above the heavy-traffic boat launch area.
- Hazard trees were identified, mitigated, and processed in the campground and day use areas.
- Park trail signs were installed on the stewardship trail, and closure signs remained up for East End Flooding to help protect the park trail system.

Marketing: Strategy Proposals and Marketing Strategies

- Idaho State Parks Passport arrived and were posted.
- Ranger McGraw developed and implemented a photo contest for park visitors that will run from June through October in hopes to gather enough quality shots to use for the development of Round Lake post cards

FARRAGUT STATE PARK – RANDALL BUTT, PARK MANAGER

Top 5 Items Not Being Addressed or Funded At This Time

1. Replacement of the telemetry line that connects the water tower to main pump house. The line failed in the fall of 2013 due to lightening but was not a FAS listed item and not covered by insurance.
2. Funding for ongoing replacements of vehicles and equipment.

Customer Service

- All facilities were in use for Memorial Day weekend except Locust Grove group camp which was closed as final work was being done on the restroom remodel. Whitetail shower house was reopened but has numerous punch list items that will be addressed by the contractor on the remodel.
- RMSPEC tours

Utilization of Facilities

- Water-valve replacements in the shop and residence areas were delayed due to cold temperatures.
- Sewer issues have affected the park. On Memorial Day the dump station had to be reduced to one lane and the Gilmore shower house closed to allow lift station pumps to keep up with effluent. On May 31, the Whitetail shower house had to be closed when drains backed up. A septic truck was available the following day and the building put back into service.
- Work at Pump House 3 has been delayed due to acquiring parts from manufacturers.
- Improvements at the Whitetail and Locust Grove restrooms are in the last stage with a punch list items being taken care of by the contractor.
- Lift pumps were replaced for a second time at Gilmore lift station to meet pump curve requirements of high level lagoons.

Park Manager's Report

- All CEO staff attended certification class.
- The bid was awarded for the second phase of the sewer effluent collection system. The work will be done this summer and fall, and will put Farragut into compliance with requirements set forth by Panhandle Health
- RMSPEC planning meetings and event participation

Preservation of Natural Resources

- IDFG has publicly announced plans to continue Ponderosa Pine restoration work along the shore line, and have marked 20 acres around the Eagle boat launch.
- The park will be doing thinning adjacent to North Road in the fall/winter of 2014, and road edge clearing around Ward Loop and along North Road.

COEUR D'ALENE LAKE PARKWAY – RANDALL BUTT, PARK MANAGER

Top 5 Items Not Being Addressed or Funded At This Time

1. Resolution of management of the Parkway by IDPR or others.
2. Renewal of the MOU with Idaho Transportation Department following the lawsuit and their actions to give the area to another government entity.
3. Stabilization of six shoreline failures that are soon to result in loss of trail sections.

Utilization of Facilities

- All facilities are in operation.

Park Manager's Report

- A scotch broom weed pull was done on Higgens Point
- Irrigation valve failure occurred on May 11 and was repaired at Rutledge Trailhead

Preservation of Natural Resources

- Tree limb thinning done specifically to promote Bald Eagle use of Higgens Point has shown good success with additional trees being used by the migrating birds during the daytime hours
- The Parkway continues noxious weed control measures, focusing on IDPR ownership at Higgens Point.

COEUR D'ALENE OLD MISSION STATE PARK – KATHLEEN DURFEE, MANAGER

Top 5 Items Not Being Addressed or Funded At This Time

1. Mrs. White's House/Staff Housing/Volunteer Sites
2. The Museum Exhibit
 - a. Excessive condensation on museum doors and above MOD 1 in museum
 - b. Increasing costs to maintain exhibit
 - c. Replacement costs of worn out AV equipment
 - d. Maintenance of SE exhibit
 - e. HVAC system – issues with locking out

Customer Service

- RMSPEC Tour
- Hired Seasonal Staff

Utilization of Facilities

- School Group-50 schools - 2,872 students and adults (3 school cancellations)
- Tours 7 groups (177) (1 group cancellation)
- Scout Troop 1 group (20)
- Easter Sunrise Service (134) – 64 vehicles
- House of the Great Spirit DVD- 6,346 people (754 times shown)
- Sacred Encounters Exhibit- 3,509 people (455 groups)
- RMSPEC Tour (64)
- Weddings 3 (290)
- VC 525 groups (3,495 people)
- GUP- Jimmy Peak Anniversary Mass (134)
- GUP-Jesuit Mass – (22)

Park Manager's Report

- Completed tasks associated with RMSPEC
- Lower park day use area and boat ramp flooded by high water
- AV tech on site to repair and replace projectors in MOD 2 – Sacred Encounters
- Staff attended CEO refresher
- Met with claims adjuster regarding insurance claim for water damage in Sacred Encounters Exhibit
- Conducted interviews and hired new ranger
- Completed PSA/NR/Flyers for upcoming Historic Skills Fair
- Staff and manager attended Reserve America Refresher in CdA

Preservation of Natural Resources

- Discussion of park with Pacific Northwest Field School as possible Site August 2014
- Working with IHT on video for their website about the Mission
- Met with new Tribe Curator for Sacred Encounters Exhibit

Marketing: Strategy Proposals and Marketing Strategies

- New custom resale items added
- New resale items from re-claimed park project wood
- Additional lighting added to resale area

TRAIL OF THE COEUR D'ALENES – KATHLEEN DURFEE, MANAGER

Top 5 Items Not Being Addressed or Funded At This Time

1. Restroom, Water at TOC Shop, Volunteer sites
2. Leases: their review and cleanup

3. Unauthorized access to Trail: Unauthorized motorized use on and alongside the trail
4. Map of Trail showing ROW, all property owners and features

Customer Service

- Interpretive program in Wallace for Road Scholars (26)

Utilization of Facilities

- Kellogg- 3,070
- Wallace-5,742
- Enaville- 5,428
- Harrison- 3,751
- Leadman GUP - UNKNOWN
- RMSPEC Tour - 64
- GUP-Tator Tot - 300
- ALS Ride - 121
- Gyro Derby - 33
- 10th Anniversary event Kellogg - 50
- Ride the Wall - UNKNOWN
- Bingham County - UNKNOWN

Park Manager's Report

- Worked with IDFG regarding Gene Day Pond
- Worked with Steve Strack and PHD regarding various encroachment issues
- Attended preconstruction meeting for ITD Pine Creek project
- Staff attended CEO refresher
- Hosted Trail Commission meeting in Kellogg
- Conducted ACP assessment of trail with ARCADIS and Jim Rolletto – 2 day
- Conducted trail inspection with ARCADIS – 2 day
- Met with Harrison city clerk and mayor regarding leases and ROW issues at Harrison
- Attended 10th Anniversary event for TOC hosted by Historic Silver Valley Chamber of Commerce
- Completed year end fiscal duties
- Met with Sunshine Mine regarding safety issues where mine traffic crosses the trail
- Interview with Rails to Trails Conservancy regarding wildlife along trail

Preservation of Natural Resources

- Completed ACP assessment and trail inspection with ARCADIS

Marketing: Strategy Proposals and Marketing Strategies

- Received custom short finger bike gloves

HEYBURN STATE PARK – RON HISE, PARK MANAGER

Top 5 Items Not Being Addressed or Funded At This Time

1. The old seasonal house needs to be demolished. There is an issue with lead and asbestos.
2. Ground fuel tank at Rocky Point improvements to the plumbing to the dock, building a fence, painting the tank.

Customer Service

- All facilities, marina store, and campgrounds are open.
- Visitor Center hours have been increased and the building is open seven days a week
- The Rocky Point Marina store is open Wednesday thru Monday from 8:00am to 6:00pm.

Utilization of Facilities

- Fishing picked up so boat launch use increased
- Cottage owners are starting to return for the summer.
- All three campgrounds were full for the Memorial holiday weekend. Trail use and boater activity was steady.
- Use on the TOC has been steady.
- The “Trail Maniacs” held their first trail run in the park on June 14. Despite the rainy day more than 100 individuals came out to run either the 5- or 13-mile course.

Park Manager’s Report

- Park Manager attended a meeting with staff and engineers to discuss the Hidden Lake Sewer connection project
- Staff met with wastewater treatment operator United Crown in Coeur d’Alene to discuss last year’s operation issues and plan for this year’s operations
- Staff attended annual CEO refresher
- Park Manager attended the TOC commission meeting in Kellogg, Benewah County Local Emergency Planning Committee meeting, annual wild land firefighting pack test and refresher training at IDL, invited to participate on Benewah County’s transportation planning committee, attended the RMSPEC conference May 12—15, Park Board meeting in Lewiston, contractor walk through meeting for the upcoming CCC buildings restoration project, ICS 100 training in St. Maries
- Staff attended the all-region meeting and retirement party for Tom Joyner
- Staff attended a workshop on managing treatment ponds
- New CXT installed in Chatcolet parking lot.

Preservation of Natural Resources

- Staff along with help from NRMP manager Keith Jones planted approximately 500 trees in the Chatcolet area
- A small (45,000 board feet) direct sale was sold to help clean up winter storm-damaged and insect-infested trees.
- Setting up a small direct timber sale in the southwest part of the park to address diseased and insect-infested trees. Access is being gained through private property.

McCROSKEY STATE PARK – RON HISE, PARK MANAGER

Customer Service

- All facilities are open and the water system has been activated

Utilization of Facilities

- Trails are drying out enough for OHV use.

Park Managers Report

- The new CXT for the trailhead at mile post 1 was installed
- Staff spent time obliterating new trails being pioneered in areas around the park.

Preservation of Natural Resources

- The Cedar Springs direct timber sale was completed and slash has been piled and skid trails obliterated.
- The Inland Empire Cooperative Weed Management Association held a spray day at McCroskey to help us target the influx of the invasive Hound’s Tongue.
- Work continues on preparing the Deep Creek timber sale for auction

HELLS GATE STATE PARK – CHARLIE CHASE, PARK MANAGER

Top 5 Items Not Being Addressed or Funded At This Time

1. Seasonal salary allotment is not sufficient for a park that is active year-round.
2. Operations budget is not sufficient for the reasons mentioned above.
3. Re-roof the shop, day use restroom, marina restroom, barn, and both residences.
4. Four maintenance vehicles are in need of replacement.
5. Hells Gate needs a group camp or two.

Customer Service

- The Lewis & Clark Discovery Center is now open seven days a week with extended hours
- The Jack O'Connor Center is now open seven days a week
- The marina store is now open seven days a week.
- Fee booth was open seven days a week, and overnight until 4:00 A.M. Thursday-Monday.

Utilization of Facilities

- All camp loops are open and have been full on weekends since Memorial Day. The group shelters were very busy with events during the weekends.
- The boat launch saw little activity during a period of cold, fast water in the Snake River. The water was too cold for swimming for any length of time, so the beaches saw very little use.

Park Manager's Report

- The annual Turkey Shoot, put on by the Hells Canyon Archers, had over 200 contestants.
- Naturalist Don Rudy presented a junior ranger nature walk April 12.
- Idaho Corrections sponsored a fly-fishing clinic that had 25 participants.
- The Seaport River Run was held April 26, with over 1,300 running, jogging, or walking
- We had our 2nd annual Volunteer Day, with over 180 volunteers from the LDS church, Cub Scouts, and Boy Scouts; painting all the cabins, shelters, and fences, plus removing a huge amount of Himalayan blackberry. Over 700 hours of volunteer time was donated to these projects.
- The Ranger position at Hells Gate was advertised and six candidates were interviewed, Greg Hodapp was hired
- Completed the remodel of the amphitheater screen.

Preservation of Natural Resources

- We have many noxious weeds that need to be treated. The Army Corps of Engineers' limits on herbicide application are a hindrance, but we will be able to treat more acreage than we once thought.

Marketing: Strategy Proposals and Marketing Strategies

- Staff attended the monthly Valley Chamber of Commerce meeting: trying to come up with marketing strategies that will bring more people into the park, especially during the shoulder seasons.
- Frisbee golf area becomes more popular each day.

WINCHESTER LAKE STATE PARK – CHARLIE CHASE, PARK MANAGER

Top 5 Items Not Being Addressed or Funded At This Time

1. O&E and seasonal funding is no longer adequate to maintain park operations.
2. Vehicles and equipment are aging and require costly repairs.
3. Visitation continues to increase annually; however, the budget to support these annual increases remains the same
4. Outdated facilities and infrastructure

Customer Service

- Winchester was without an assistant manager the entire month of April.
- The ice was completely off the lake by the first full week of April
- We have all our summer staff and hosts hired and are thus able to have the VC open seven days a week with extended hours. The addition of one office seasonal being funded by Dept. of Labor has allowed for a greater level of customer service both in the store/kiosk as well as keeping the other park facilities up to our standards.
- We are wrapping up preparations for the Winchester Days Celebration and for the fishing tournament coming up in late July. A good supply of donations for prizes has been acquired already and press releases are out.

Utilization of Facilities

- We were at capacity for the Memorial Holiday
- We are in the process of repairing the vault toilet vent stacks; some have been sealed to prevent further damage from leaks.
- The boat ramp and day use parking lot are near full every weekend with continued questions regarding the replacement of some of the fishing platforms that were removed for safety concerns.

Park Manager's Report

- The potable water shortage situation for the city of Winchester continues to be the priority topic of the community and chamber meetings. As of May 13, bids were opened and approved to drill a test well on the Davis property. This is scheduled to begin the first part of July. The 595 Grant from the Corp of Engineers has been committed (\$450,000). Rural Development has also committed \$1.8 million to the project.

Preservation of Natural Resources

- Identified a few hazard trees in the park and a few more on the edge of the lake shore trail.
- Working with the Department's Natural Resource Specialist regarding a continued effort in weed abatement. An effort was started last year to reduce the knapweed and thistle.

Marketing: Strategy Proposals and Marketing Strategies

- The new and different items to stock for resale have been an astounding success. Keeping in mind items that coordinate with the surrounding area has proven a successful approach.

DWORSHAK STATE PARK – CHARLIE CHASE, PARK MANAGER

Top 5 Items Not Being Addressed or Funded At This Time

1. Parking improvement for Sun Shelter.
2. Trail system from Freeman Creek to Three Meadows.
3. Square swim dock.
4. ATV Trail system from Freeman Creek to Mason Butte

Customer Service

- The outside docks at Big Eddy are full. We are working toward filling the inside slips.
- On May 10, we participated with US Fish and Wildlife Service sponsored Tunnel Pond Fishing Day. We set up a booth and assisted children in making bird feeders out of the gigantic pine cones that fall to the ground at Big Eddy.
- At Freeman Creek the shuttling from the ramp to the activity field occurred the last two weekends in June; we are getting very positive feedback on our efforts to keep the boat ramp running smoothly.

Utilization of Facilities

- Freeman Creek hosted the annual Clearwater Archery Clubs 3-D shoot, about 150 archers participated in the intermittent rain and sun

- No boat ramp in the water at Freeman Creek until May 12, which affected our spring camping and day use.
- Idaho Fish and Game stayed at the facility for a multi-day meeting and the following week a Cold Water Fish Culture Class was held there by the US Fish and Wildlife Service/Nez Perce Tribe/Idaho Fish and Game.

Park Manager's Report

- The Idaho Youth Challenge Academy out of Pierce sent up 30 youths to assist with two projects: One half raked leaves in the Osprey Loop and the other half worked on trimming back flora and removing rocks from the ditches along the Three Meadows Road
- With the rapidly rising lake levels (3+ feet per day) we have been working diligently to keep the Big Eddy Marina adjusted properly and the houseboat buoys above water. Unfortunately, because our reservoir levels dipped so low this year, the slack in the cables from three of the buoys became entangled in the underwater standing timber and the buoys are currently underwater.
- Dworshak Reservoir filled to full pool on June 27

Preservation of Natural Resources

- Removed hazard trees from the campgrounds, and are now moving into the peripheral areas.
- Utilized the North Region's chipper to assist with leaving the biomass in the areas instead of transporting it to the burn pile.

Marketing: Strategy Proposals and Marketing Strategies

- Staff met with a representative from Moscow Area Mountain Biking Association (MAMBA) to look at some areas for a possible dual purpose trail (mountain biking, hiking, winter activities). We are hoping that this will give us a separate user base that is not dictated by the fluctuating lake levels. The goal is to create a trail system to connect with the Big Eddy trail and provide more biking opportunities in the area.

**SOUTH REGION QUARTERLY REPORT
APRIL – MAY - JUNE 2014**

Core Mission:

To provide a safe and unique experience while preserving, protecting, and enhancing recreation. We interpret natural, cultural, and historic values. To maintain park infrastructure for visitor services and programs, while looking for new opportunities.

Primary Issues and Concerns

- Fiscal year-end budget close out
- Continued monitoring of South Region operating and seasonal budgets
- Continued preventative maintenance backlog created by limited budgets and staffing
- Creating new opportunities with limited resources
- Hiring and retaining skilled professional staff
- Looking for dedicated funding
- Investment in marketing and revenue enhancing ideas

SOUTH REGION SERVICE CENTER – GARTH TAYLOR, SOUTH REGION BUREAU CHIEF

- Continue working with the HR officer on Workplace Safety issues and training.
- Monitoring US Fish and Wildlife CCP (Comprehensive Conservation Plan) at Walcott, they have been in consultation with our department. They are in the writing phase and we await a draft review.
- Walcott electrical upgrade project with BOR assistance, matching grant has been approved. The campground power has been turned off until main distribution lines are replaced. Phase One has been completed, while Phase Two has been let out for bid. Should have power back to campground by mid-August.
- Continuing to work with Bob Hansen on some new potential park sites in Eastern Idaho. Have been meeting with ITD District 6. American West Heritage Center near Logan gave us a tour to discuss possible ideas for Billingsley Creek development. Discussions continue for a possible partnership with Fish & Game on a piece of property near Roberts with a lodge and small campground. The property was purchased by Ducks Unlimited and now they would like the state to take it over for public habitat and recreational opportunities. F&G is interested in the habitat and the birding opportunities. We also met with Frank Irwin, who has the farming lease at Billingsley Creek, to discuss adjacent land ownership.
- Hired a new ranger (Joe Blackburn) at Land of the Yankee Fork replacing ranger who was promoted to the manager (Joni Hawley). Ranger from Bruneau transferred to Lake Cascade leaving an opening. Also a new .75 ranger was part of our FY15 budget package to assist with the Harriman/Henrys Lake complex. We hope to be filling these very soon.
- A follow-up ITD inspection of the Ritter Island Bridge has been conducted: the bridge has been cleared for less than three tons and one vehicle at a time access.
- Meeting with the Ashton Foundation on the future of the Ashton-Tetonia Trail. Group is interested in connecting the community of Ashton and extending the trail another ½ mile in to the “Y” area of town.
- Initial meeting on park programing and special event opportunities was held with Fundraising Coordinator and a few park managers. Discussed potential partnerships and outside funding options.
- Derek Ford, a disc golf enthusiast, has proposed placement of another nine holes at Three Island. He is also proposing that we consider a State Park disc golf series. Several South Region Parks

could benefit from this venture; i.e., Massacre Rocks, Lake Walcott, Three Island, Lucky Peak, and Eagle Island to name a few.

- Met with JUB at Vardis Fisher to discuss final survey and land transfer to F&G.
- Working closely with IDL on grazing leases at Harriman. There is some contention on our lease at Sheridan.
- Attended another Capital for the Day in Rigby.

BEAR LAKE STATE PARK – KIRK RICH, PARK MANAGER

Top Items at This Time

1. ISDA boat check station is stopping about 70% of the boats. The sheriff's office is now refusing to take calls concerning boats which pass by the check station. This has resulted in calls directly from the check station to the North Beach kiosk where personnel are expected to turn the boats around. This year the station runs without a reader board on Highway 89 or a person on the road directing traffic into the staging area at our office.

Customer Service

- Group reservations have been strong and giving us a good season.

Utilization of Facilities

- Facility usage for Memorial Day was high with campers, day-users, and boaters who returned in good numbers.
- Summer usage is equivalent to last year with the last Saturday of June proving to be an 800-car day.
- One wedding took place at East Beach in June.

Marketing

- New signage along with office staff at the visitor center has helped to bring in customers to purchase retail items. We are considering new items to add to our minimal inventory.

Park Manager's Report

- Landscaping and washed rock was added to the surrounding area around the new East Beach restroom that was installed late last fall.
- ISDA has set up an invasive species check station in the office parking lot: boats are now being checked in Utah at Garden City with many of these boats again being checked at St. Charles.
- On June 1, the park manager started his 45th consecutive year as an employee at Bear Lake State Park. Available staff celebrated by eating cake and checking Kirk's pulse.
- The manager spoke with Gary Rucker concerning how remaining funding would be spent on electrical changeover at the two remaining older style restrooms. Apparently an outside engineer will make some recommendations.
- New marine deputy Ryan Larsen has proven equal to the task and Paige Bunderson has returned as a marine deputy assistant. Both are EMTs and their services have been used in the past.
- The manager has access to a 'drone' which flies a "Go-Pro" camera. Some footage has been shot of North Beach already. Another Go-Pro camera is being used to shoot some time-lapse of park patrons entering the park. Maybe we can have a short presentation by fall meeting.
- Our two-lane boat ramp is usable for full sized craft and our three-lane jetty ramp can launch boats which take up to a 30-inch draft.
- All parking is now on the beach with the potential of 1,400 cars a day being able to use the North Beach facility.

BRUNEAU DUNES STATE PARK – STEVE RUSSELL, ASSISTANT MANAGER

NITA MOSES, PARK MANAGER

Top Items at This Time

1. Adequate water is needed for turf areas and trees; an application was received to water current acreage but it does not include additional water. Weeds in turf areas continue to be a problem which is partly due to lack of water. We have also experienced tree loss due to wind damage and in part to not having adequate water.
2. Recruiting for park hosts and maintenance hosts has been difficult as we need to pay more than minimum wage to get a better selection pool. We need to make our nine-month classified positions into twelve-month classified positions to avoid turn over. Current ranger was transferred to Lake Cascade.

Customer Service

- Visitor Center is open daily 9:00 AM to 5:00 PM and had 1,696 visitors in April, 2,834 in May, and 2,577 visitors in June.
- New telescope was assembled by park in April
- Staff completed the Dark Skies display in June.

Utilization of Facilities

- We saw 2,294 campers in April, 4,500 in May, and 2,592 in June.
- Observatory programs in April had 574 visitors, 1,014 in May, and 655 in June.
- Interpretive programs this quarter included: 339 students from schools, 125 runners for the Bruneau Beast, 60 visitors for IDFG outreach programs, and 54 visitors for Wild Chef event.

Marketing

- Restocking resale items for June and our sand-board and snow-saucer rentals are going well.
- Posting summer pictures on Facebook to encourage visitors to come and see the park.

Park Manager's Report

- We have installed the new signs and posts for our reservation markers.
- Recharging lakes at this time. Pump was turned off for the season on May 15.
- Irrigation system maintenance continues with major valve leak repairs.

Preservation of Natural Resources

- IDFG currently finishing research on Dunes Tiger Beetle in the park and is conducting a fish creel census this summer.
- Ranger is working on Skelton Weed and Russian Thistle removal.
- Waiting to hear about required water meter installed on the river pump.

CITY OF ROCKS/CASTLE ROCKS STATE PARK – WALLACE KECK, PARK MANAGER

Top Items at This Time

1. Preparing FY15 Budget Plan for CIRO & CRSP.
2. CIRO General Management Plan (preparing for tribal consultation and public review).
3. NPS CIRO Project – bury power lines through reserve, compliance/permitting.
4. Partnership with Southern Idaho Tourism on exhibits at new Twin Falls Visitor Center.

Customer Service

- Park interpreter was hired in May.
- Visitor Center is now open seven days a week.
- Had 23 programs offered to 266 visitors in June; regular programs are offered on weekends.
- Climbing Experience Program was conducted 10 times to 38 paying customers.

Utilization of Facilities

- Combined parks visitation = 50,557. The Lodge was occupied 19 nights, the bunkhouse 9 nights, and the yurts were occupied 68 nights. Campsites were occupied 2,301 site/nights.

- Park ranger led an auto tour on California Trail for Good Sam's Club.

Marketing

- Park Manager was a featured speaker to discuss "The Secrets of the City" at Herrett Center Forum, 155 in attendance.
- Met with Twin Falls Chamber of Commerce to develop CIRO exhibit in new Canyon Rim visitor center.
- Grouse Creek backcountry byway signs were installed and project was completed.
- New CIRO/CRSP trail map sent for publication.
- Communication, interpretation, and social interaction on Facebook: 1,306 friends at Castle Rocks site, 2,514 friends at City of Rocks site as of this report.

Park Manager's Report

- Had complete HVAC system failure at visitor center in April and had to replace system.
- Monitored and documented construction of Castle Rocks shelter. Both the shelter and CXT were installed in May.
- Reviewed and granted permit to Duane Ackerman to place fixed anchors in CIRO.
- Three disc golf baskets were installed at Castle Rocks, Almo Creek picnic area.
- CIRO wayside exhibit panels installed in 2003 were replaced with spare set.
- Wrote agreement between Southern Idaho Tourism and NPS – Idaho units, for exhibits.
- Implemented Samsung tablets into fee collection/reservations management, eliminating paper process for volunteer hosts and employees.
- Developed proposal to trade benefitted seasonal employees for one FTE Maintenance Craftsman.

Preservation of Natural Resources

- Processed CIRO grazing permits completed signing of the 2014 pasture lease at CRSP.
- Obsolete Button Springs development in CIRO removed, natural hydrology restored.
- NPS (UCBN) stream quality monitoring equipment has been deployed for the season.
- Developed project proposal to reduce fire fuels in CRSP Erickson acquisition.
- Removed dilapidated corral at Juniper Group Camp, restoring California Trail landscape.
- Conducted annual USGS Breeding Bird Survey in June.

Preservation of Cultural/Historical Resources

- Park ranger met with archeologists to resolve dating of prehistoric materials at CRSP.
- Worked with Raft River Electric to plan location of electrical boxes in the power line bury project.
- Continuing to work on California Trail historical booklet.
- Finished the Indian Grove Wetland Protection (cattle exclusion) project compliance by excavating to remaining profiles as requested by SHPO.
- Drafted letters to Shoshone Paiute and Shoshone-Bannock for GMP consultations.

EAGLE ISLAND STATE PARK – GARY SHELLEY, PARK MANAGER

Top Items at This Time

1. East restroom is too small for the large groups using this side of the park. We know that the existing sewer line is not to code. *-Funding has been requested for this item.*
2. Artesian well used to supplement clean/cold water to park swimming lake is no longer producing water quantity needed to keep lake clean and safe *-Funding has been requested for this item.*
3. Need to pave new entrance road from State Street, which has been funded in FY15.
4. Funding is needed for entrance kiosk.

Customer Service

- We have made additional improvements to the park's maps and brochures to help visitors.

- Park use has increased again this year, so we have diverted a lot of our time to making sure the bathrooms are cleaned and the trash and trash cans are cleared more frequently. This, however, has caused us to slow down on park maintenance. During our extremely busy weekends we have begun warning people at the entrance kiosk that there are no tables, grills, or shade to camp under. The visitors appreciate the information, but it has not deterred them.
- Made extra parking rows in the overflow field for the July 4 weekend.

Utilization of Facilities

- Had 1,200 vehicles on Memorial Day this year compared to last year's 350 vehicles.
- Held four events at the park in May; Civil War Volunteers with approximately 2,300 kids, Trout Unlimited Fly Casting Tournament with 85 participants, Eagle Island Experience with 1,000 attendees over the two days, and Cops and Bobbers with 250 participants.
- June has brought moderate use during the week and extremely high use during the weekends.
- Eagle Fire Department is using our lake for water rescue/recovery training.

Marketing

- Working with our disc golf club to get sponsors for the new disc golf course.
- Continue to update our Facebook page and website. Have started conversation with Lauren Gettman (Mrs. Eagle Idaho) to include us in the City of Eagle's event (SafeKids - Bike Rodeo/Helmet Fittings).

Park Manager's Report

- Met with Shannon from the Penguin Plunge (Special Olympics Idaho) to talk about next year's event, Carl from the Eagle Island Experience to discuss event specifics and logistics, Ryan from Nike Cross Country/ Firman Cross Country to talk about course improvements, Marlon from Cops and Bobbers to discuss this year's event, Boise Philharmonic Director to discuss issues and logistics for concerts, and the City of Eagle Deputies and asked for increased patrols.
- Worked with several electricians and pump companies to get our west lift station fixed.
- Eagle Scout group installed shelter name signs (they look great!!!) and built tables for the new shelters. Continue to work with another Eagle Scout to design and install railing around power pedestal at the Falcon shelter. Working with another Eagle Scout to build additional park tables and remove horseshoe pits near Osprey shelter. Fresco Arts School and Rock Harbor church volunteer groups worked on projects.
- The new shelters have been completed and have tables and barbeques. Have also trenched and laid new irrigation lines around the Falcon shelter.

Preservation of Natural Resources

- Marked locations for new trees that will be installed by the Snow Hill Company.
- Continued to spray and pull noxious weeds. Two church volunteers are helping us pull noxious weeds throughout the summer.

Preservation of Cultural/Historical Resources

- Continue to patrol and repair damage to park's historical buildings.

HARRIMAN/HENRYS LAKE STATE PARK – JOHN SULLIVAN, PARK MANAGER

Top Items at This Time

1. Fire suppression/alarm system repairs are needed.
2. Hiring .75 for Henrys Lake.
3. Group Use Permits and events: music camp, family reunions, conferences etc.
4. Getting Henrys Lake campground 100% complete, open and promoted.
5. Seasonal hiring; Harriman is down two summer employees and volunteers.

Customer Service

- We have started the redesign of the "camping room" in the Jones House and are cleaning and making improvements to other displays.

- Phase II of the resale area and office remodel is ongoing.
- Photo/interpretive displays for the dining hall are finally installed and look great. Started our weekend and holiday tours of the ranch. So far, they are not being well attended but we are looking at ways to provide more self-exploration and greater access to the buildings.
- Jr. Ranger programs are being conducted every Saturday.
- Hosting, instructing, and attending, Idaho Master Naturalist trainings.
- Actively seeking and developing a volunteer program for the park to assist in our interpretive and education efforts.

Utilization of Facilities

- Early season bird watchers were out and about in April.
- Reservations greatly increased after the opening of the Henrys Fork with lots of back-to-back stays and single-day turn-a-rounds.
- Weekends are busy now with trail usage up and we are seeing hikers, biker, and equestrians.

Marketing

- We received excellent press this spring from a Wall Street Journal article proclaiming we are a great alternative to the overcrowded Yellowstone Park.
- Park Manager is continuing to make contact with chamber groups, Island Park Mayor, and Fremont County Commissioners and officials.
- We are actively seeking support and participation from the local Idaho Master Naturalist groups, in order to enhance programs at the park.
- Park manager met with and was luncheon guest speaker for Targhee Women's Group. He has also been attending meetings with Ashton Community Foundation, Fremont County, and the Western Greater Yellowstone Consortium regarding development of the Greater Yellowstone Trail.
- Park manager attended portions of the HFF's 30th Anniversary and Henrys Fork Days. We also hosted the HFF Advisory Team meeting in June.

Park Manager's Report

- Infrastructure issues have plagued us this year. We had a \$1,200 repair to a sewage lift station and broken water pipes in the Boy's House and Dining Hall. We have also had to deal with motor replacement of our shop air compressor, sewer line clogs and sewage coming through floor drains of the dorm, internet failures, and a major failure of almost our entire fire alarm/suppression system. It will cost almost \$4k just to get us back to ground zero of a system that needs major help.
- Home Ranch grazing lease has been awarded. The winning bid was four times higher than previous contract. IDOL lease in Sheridan Unit: Both competitors have dropped out and we will be getting the lease un-contested. We will be working on an MOU with IDOL to assist in future bids and use of the Corral system.
- Friends group has received a \$2,500 donation from Averill Harriman-Fisk with a possible additional donation in the future.
- South Region Crew completed the installation of three CXTs, road grading, and expansion of Bitch Creek parking area.
- Scovel Center damage repair was completed and we are back on-line, hosting the public and scheduling events.
- PM worked with Nelson Ishiyama and the Bamboo Rod event to secure a \$2,600 donation to the Friends group.

Preservation of Natural Resources

- We had a couple trail closures in effect for elk calving and nesting birds in May. But, as of June, the trail closures have ended.

Preservation of Cultural/Historical Resources

- Jodi Stiehl, Friends President, visited the park with members of a grant committee. We are finalizing grant applications and obligations of our trail signing, ADA river-trail access and Aspen projects.
- We are identifying and prioritizing major building needs at the ranch: Ranch Manager's roof issues, Cattle Foreman's foundation and wall issues, and buildings needing log replacement.
- In contact with ERO and Gary Rucker regarding the seven ongoing development projects for Harriman, Henrys Lake, and Ashton-Tetonia Trail. Replacement of the Ranch Foreman's roof starts on July 7.

Henrys Lake State Park

Customer Service

- Staff schedules for the coming season are being evaluated to; increase overall presence, increase gate hours, and have a greater classified employee presence.
- Our main focus has been to get the new campground up and running.

Utilization of Facilities

- We are fully open, in the old section, and opening weekend was chaotic as usual. Use is moderate to heavy, and the fishermen are out in force.
- The new campground is now open for walk-ins and went online July 1. Camp hosts have finally moved in.
- The new ramp is finished and docks are in place.

Marketing

- We are getting ideas together for how to promote and create awareness for the opening of the new campground including press releases and other promotional ideas.

Park Manager's Report

- The new .75 Ranger position, announcement, qualifications etc., are being finalized.
- We have another breakdown of the "Ozinator" on the fish cleaning station. This is an all too common theme and is always an expensive issue.
- In contact with ERO and Gary Rucker regarding the status of seasonal housing improvements, and the RV grant remodel of the old RR.

Preservation of Natural Resources

- Starting initial steps with Fremont County Weed people concerning issues that will arise due to the construction of the new campground.

Mesa Falls

Customer Service

- New info kiosks and interpretive signs are being installed by USFS.
- Resale operation is up and running.

Utilization of Facilities

- We are fully operational and visitation is steady.

Marketing/Promotion and Advocacy

- Brochures have been edited, new logos were added; we are having them printed.

Park Manager's Report

- Resale items for the store are being purchased
- Cost Share Agreement and operational plan have been signed by all and copies filed.

Ashton-Tetonia Trail

Customer Service

- Plans are underway and materials purchased to make the Marysville area/box car a full-blown trailhead: CXT installed, three tables going in, kiosk being built, and working on site clean-up

Utilization of Facilities

- Use is increasing with bikers and hikers. We need to develop some way to accurately account for visitation.

Marketing/Promotion and Advocacy

- Details are being finalized for the Grand Teton Relay Race which is held in August and is using a portion of the trail.
- Website updates and map improvements continue with community and local business contacts, address signage needs, local artists may possibly paint the box car as a “Billboard” to identify the trailhead and promote/market.

Park Manager’s Report

- The City of Tetonina has assisted in working with us by improving access from the city park to the trail and placing a beautiful sign at the Tetonina trailhead.
- Phase III of the approved Marysville Canal Co. project is coming to an end. The project crossed the trail in three spots and will require some rehabilitation.
- Information on history, surroundings, design, and photos being gathered to get the web site updated and active.
- Interpretive sign design for the Bitch Creek Bridge is complete; it will be installed this summer.

LAKE CASCADE STATE PARK – THERESA PERRY, PARK MANAGER

Top Items at This Time

1. The request to share radio tower space on Reclamation’s communication tower is still under consideration. Park staff is completing additional radio testing with Valley County Sheriff’s Office to determine other communication options.
2. The park’s headquarters facility, especially the office areas, does not meet the needs of the public or the park’s operation. Creating a suitable and visitor-friendly headquarters is needed.
3. As noted in 2013, four boat ramp pilings have been sheared off by the ice during spring thaw, (Poison Creek, Blue Heron, and Boulder Creek. A replacement schedule and potential funding sources for the system of park docks and pilings need to be developed.
4. A solution to shoreline erosion in several of the park’s units continues to be a critical need. The park continues to lose valuable and critical recreation space.
5. The past two winters’ sewer line issues have plagued the park residences on Dam Road. A final plan for resolving this issue needs to be chosen along with securing funding for further assessment of the line and potential repair options.

Customer Service

- The park staff worked to prepare handling docks and facilities for the annual Howdy’s Fishing Tournament in April and to accommodate the Memorial Day weekend, early spring conditions, and the start of camping reservations.
- All six of the park’s boat ramps now have lifejacket loaner stations that are fully stocked, as provided by the IDPR Boating Program.
- Park staff has received several complaints about the lack of fishing access from the park’s handling docks, especially for those who have mobility limitations or those with younger anglers. Due to conflicts with boaters, fishing is not permitted from the handling docks. The park manager is exploring options to provide this service.
- The park’s interpretive efforts were significant. Junior ranger and evening campfire programs have started. Staff provided programming and support for the summer reading program, free lunch program, and community day camp.
- The Wi-Fi service in Ridgeview has not functioned for several weeks. Park staff continues to work with fellow IDPR staff and the service provider to resolve this customer service issue.

Utilization of Facilities

- Warm and dry weather provided a great setting for visitors during the Memorial Day holiday and on into June.
- In addition to high campground usage, the park served as the host for a bass tournament and the Southern Idaho Sailing Association's regatta.

Marketing

- Working with a local vendor to provide firewood sales in our campgrounds again this summer. The park has started to provide advertisement for the park's First Time Camper program.
- Park staff worked with staff and volunteers from the Southern Valley County Recreation District (SVCRD), U of I Extension, and the Cascade Cultural Arts Center. The park is partnering with these groups to provide programming for the new summer day camp being held in June, July, and August with each session being five days. SVCRD is acting as the managing entity and the park is providing environmental education based programming.
- We are participating in the planning of the fifth annual 4-Summit Challenge in May. Staff took the lead for many of the marketing/advertising elements of the event, along with general event details.
- The planning for a new event, the Cascade Gravel Grinder Challenge, that will serve mountain-bike enthusiasts, is under way and scheduled for September 6.
- Park staff provided programming regarding the dangers of hypothermia and lifejacket use during the annual Bike Rodeo and Safety Fair in May. Approximately 100 students attended.
- Park staff served as the lead to organize and provide support for Idaho's Free Fishing Day held at Fisher Pond in Cascade. More than 70 kids enjoyed fishing, crafts, and a barbeque.
- Park staff and volunteers operated an information booth during 2nd annual Payette River Games held at Kelly's Whitewater Park. Estimated attendance for this three-day event was 30,000 people.
- The park is partnering with Kelly's Whitewater Park and the Cascade Chamber of Commerce for the third year to operate the Visitor Information Depot located at Kelly's. The Depot opened on June 26 and will be in operation three days per week.

Park Manager's Report

- Park staff met with Reclamation staff and reviewed the shoreline stabilization project at Sage Bluff and Big Sage. The group also discussed the park's operation, many of its needs, and its programs.
- The park manager presented information to the Valley County Commissioners meeting, providing a park update and general overview of the park and its programs.
- Park and agency staff met with Idaho Fish and Game staff at Horsethief Reservoir to discuss a potential operational partnership. Further dialog and research will be pursued.
- The park has provided support to the Cascade High School to complete a drainage and water quality improvement project just north of the Sage Bluff unit. Park staff requested the contractor responsible for the shoreline armoring project to finish the rehabilitation (grading and adding gravel) to this small parking area to complete the efforts.

Preservation of Natural Resources

- Spraying of noxious weeds and removal a few hazard trees were completed this quarter.

Preservation of Cultural/Historical Resources

- Park staff and Development Bureau staff met at the Sugarloaf boat ramp area with the selected engineering firm to discuss the renovation project. The project is slated to begin in September.

LAKE WALCOTT STATE PARK – TRAPPER RICHARDSON, PARK MANAGER

Top Items at This Time

1. A bucket truck is needed for tree maintenance in the park.

2. Paved walking trails need extensive repair work.
3. Extending of the fence around the old office and yard area is needed.
4. CCC rock walls are in need of repair.
5. Paving on main roads is needed.
6. All drinking fountains in the park need to be replaced.

Customer Service

- Beginning in April, most boaters (fishing) had the Parks Passport, approximately 80%. As the weather warmed and recreational boaters started coming out along with the first of the water-skiers, tubers, and jet skiers. We estimate the overall number of passport users to be approximately 30%.

Utilization of Facilities

- Memorial Day weekend was our first “at capacity” weekend and most weekends since have found all camping spots full. Camping during the week we took a downward trend (possibly due to the lack of electricity). However, tent camping during the week was up—especially on weekends. The allowance of generators has aided in this lack of convenience. The two cabins also remain a popular choice during the weekends and are usually at capacity Friday through Sunday. We are hoping to see a bump in use this coming fall if the electricity is restored.
- This quarter we had seven wedding receptions, four church parties\dinners, three family reunions, a bass tournament, and the Bureau of Reclamation held a staff BBQ in the park.
- The fifth annual 5/10K Fun Run was held in our park as a benefit to Acequia Elementary. It has turned into one of our most well-attended events. The first year it drew about 100 runners and since then participation has held at around 200 runners.
- In June we had the first Snake River Shootout: a Disc Golf Tournament with approximately 32 players. This was the first tournament to be held so early in the season. As it gets more well-known we hope to have a higher attendance.

Marketing:

- Park staff has ordered several new retail products and have been working on keeping products such as ice and firewood in stock.

Park Manager’s Report:

- Phase I of the electrical upgrade was completed in February. Due to several rocks encountered much of the project was completed via trenching with a trac-hoe and a large rock saw, resulting in damage to the irrigation lines in the vicinity. While the contractors fixed what they could find, there was a large amount of damage that went unseen until spring when we found that some of the lines were clogged with sand and gravel. This is now fixed and the grass is now greening up.
- Phase II began in early June and is scheduled to be completed in mid-August. This Phase has consisted mostly of work in the RV court and, because the work was done while the irrigation system was up and running, very few problems were encountered. Rehabilitation of disturbed areas will begin once construction is completed.

Preservation of Natural Resources:

- Park manager and ranger have been checking trees for damage after recent storms.

Preservation of Cultural/Historical Resources

- Manager discussed the repairing of the CCC walls with the BOR Archeologist who is working here and would like to get the paperwork started for the project.

LAND OF THE YANKEE FORK STATE PARK – JONI HAWLEY, PARK MANAGER

Top Items at This Time

1. Bayhorse was an aid station in the River of No Return Endurance Race. The race had 300 people from age 18-75 participate. They are planning on having the race as an annual event. There was a 25K, 50K, and 100K race. The 50K and the 100K race ran through Bayhorse. Our trail ranger

staff was stationed at Bayhorse to assist with traffic and help the event planners if any problems arose. It was a great success and we look forward to next year.

2. Secured hosts for Bayhorse starting July 15 through mid-September and had an unexpected couple step in to host the end of June and will stay for the first two weeks of July.
3. The Bayhorse trail rangers have done an exceptional job on the trail. Their efforts are greatly appreciated by the users and our partners as they continue to get compliments of their hard work.

Customer Service

- The park donated maps to put in the bags that were handed out to the participants of the River of No Return Endurance Race.
- Park employees provide the travelers with maps, answered questions about local road construction and general information about our park and surrounding attractions.

Utilization of Facilities

- Archeology Day was held in May with 124 students, teachers, parents, and presenters attended the “Idaho Lookouts” program and activities.
- “Fire Lookout” program was presented by John Rose USFS with 10 visitors attending.
- Veterans’ Day Services were held in May with 74 people in attendance.
- Mackay School group with 15 attendees and Castleford School group with 59 attendees visited the park in May and a Boy Scout troop of 13 visited in June.

Marketing

- The park volunteer has taken responsibility for posting sale advertisements and events on Facebook.
- We have been holding sales in our gift shop offering 20% off featured items and advertising the sales on our Facebook page.
- The trail ranger position and the “Fire Lookout” program were both advertised on the local radio station KSRA in May.
- Posters were placed around town, advertisement in the newspaper and local radio spots were used to advertise Custer Day.

Park Manager’s Report

- Hosts have continued to be a huge help with the maintenance of the grounds, facilities, and operation of the Visitor Center while the Park Ranger position was vacant.
- Bayhorse use fees have increased and will continue to do so with the presence of a host on-site.
- DEQ came to Bayhorse for a meeting and Development’s Gary Rucker was in attendance. We reviewed the testing procedures for both Bayhorse and Skylark.

Preservation of Cultural/Historical Resources

- We received a donation in May of an ore bucket from the Custer Mine.
- Staff has been accessing artifacts that have been in storage; we continue update our records.

LUCKY PEAK STATE PARK – SURAT NICOL, ASSISTANT MANAGER

GARY SHELLEY, PARK MANAGER

Top Items at This Time

1. An upgrade of the restrooms at Sandy Point is needed.
2. Automatic irrigation system at Discovery unit continues to be a request item.
3. Bank erosion at Spring Shores is a problem and needs to be addressed. Some funding has been secured in FY15 budget.
4. A Spring Shores master plan is needed.
5. Request is being made for additional day use shelters at Sandy Point.

Park Manager's Report

- Race to Robie Creek was another success with approximately 1,600 attendees. High water reduced parking and extra traffic created more work than anticipated, but volunteers and staff did a great job for the 18th straight year.
- Outdoor Day at Discovery was another success. Approximately 150 students, teachers, and guests spent the day at Discovery learning about the environment, participating in outdoor activities, and having fun. This is a great partnership with Timberline High School, Garfield Elementary, IDPR, TREE Club, and many guests.
- A new security company was hired in May and started at Spring Shores. The company is Signal 88 Security and is based out of Omaha, Nebraska.
- A disc golf tournament was held at Sandy Point in May with 37 participants. Food was donated by one of the Chipotle restaurants in Boise.
- The Famous Idaho Potato Race started at Sandy Point and there were over 150 participants.
- Prestige Water Sports had a demo day at Spring Shores with approximately 15 attendees.
- Robie Creek Volunteer Fire Department Fishing Derby was held at Spring Shores with a good turnout of about 100.
- Spring Shores hosted a police canine training session.
- The Ironman Triathlon Idaho Event was held at Lucky Peak with approximately 2,000 racers and spectators. Sandy Point was used for overflow and contestant parking.

MASSACRE ROCKS STATE PARK – KEVIN LYNOTT, PARK MANAGER

Top Items at This Time

1. The park is in need of a backhoe/loader.
2. Maintenance crew leader is on leave due to a medical condition.
3. Lack of an adequate seasonal salary budget for remainder of fiscal year.

Customer Service

- The modifications to the Upper Loop campground were completed and visitors appreciate the new pull-through campsite that was constructed this spring.
- Staff conducted several school programs in May. We have seen more schools coming to the park than in previous years.
- June was a busy month. We hosted the third annual Bring on the Heat Disc Golf Tournament on June 14 and all 25 participants had a great time.

Utilization of Facilities

- Memorial Day weekend was exceptionally busy with the campground being full all weekend long and had up to 10 camping families in our overflow primitive area.
- May and June were both busy months at Massacre Rocks. Campers, day users, and fishermen visited the park in larger than average numbers. We had a larger than normal number of disc golfers using our two courses.
- Boating use has increased significantly. We had two fishing tournaments hosted at the park by bass clubs from Twin Falls and the Pocatello area. Bass fishing has been improving as the river temperatures begin to rise.

Park Manager's Report

- The benches for the program area were repainted and installed in late April. We had our first of many fourth-grade school groups come out the first full week of May.
- Received the preliminary architectural drawings for the visitor center building expansion but haven't heard anything from the architect since March. At this time our recommendation is to hold off on any construction until fall in order to prevent any problems with our visitor center operations this summer.

- Waiting for a plan of action campground septic system project; will hold off any work until fall.
- In a sudden micro-burst during a late afternoon storm, the sun-roof portion of the visitor center deck was blown off the building and thrown over 300 feet. We have received one bid for repair to the roof and are waiting for a second in order to have the damage to the building repaired.

Preservation of Natural Resources

- Hiking trails were sprayed for weeds
- Mowed the firebreaks along our park road system to reduce fire hazards in the park and hopefully avoid range fires this summer.

PONDEROSA STATE PARK – RICHARD TAPLIN, PARK MANAGER

Top Items at This Time

1. Park Budget and staffing level and wages of permanent and seasonal employees
2. Kokanee Cove long-term future/planning
3. Peninsula road issues – improving road to point, crack filling and chip sealing paved roads.
4. Paving new bike path around Visitor Center – needs funding.
5. Erosion control / bank stabilization parks lakefront is funded for FY15.

Customer Service

- Memorial Day saw full campgrounds and cabin use was high through the month.
- Visitor center is open seven days a week. We are still looking for employees to fill necessary positions at entrance station. Area-wide problem in McCall finding people to fill positions, most businesses in town are in same position as reported in Star New June 26.

Utilization of Facilities

- Park saw a number of groups use the park including McCall Outdoor Science School (MOSS), Migratory Bird Day, and Southern Idaho Forestry Tour.
- Since FY09 park has increased yearly revenue by over \$320,000 a year, a 65% increase.

Marketing

- Park staff continues to inform public on how to get the new Passport. Passport report showed that Valley County had almost 50% of vehicles registered in Passport program which reflected what staff has seen at the entrance station.
- Park is now a vendor for the McCall Lake Cruise Company.

Park Manager's Report

- Park manager gave a presentation to the Master Naturalists group in April about Forest Ecology and Fire Ecology.
- Park is participating with the Payette River Water Trail group.
- Staff worked hard to get the park ready for Memorial Day; they did an excellent job in a very short ten-day period. It was maybe the best Memorial Day in the last ten years for weather, visitation, and condition of the park.
- The park has seen a 36.5% increase in utilities from FY13, up \$24,488. With another 30% increase in sewer costs coming in FY15 at least another \$4,000.
- Park manager participated in a boat tour review of Payette Lake and issue of abandoned docks and logs.

Preservation of Natural Resources

- Park staff continued hazardous tree removal in the park. Park staff, IDL, and USFS personnel put out MCH (Methylcyclohexanone), which is a chemical that replicates a natural pheromone that Douglas Fir Beetles emit telling other Douglas Fir Beetles the tree is fully occupied – saying “No vacancy” to the beetles. It protects the tree from further attacks. If put out in a grid system in an area, it tells the beetles that the whole area is occupied and disperse the beetles. MCH is put into pouches and stapled to individual trees, or in a grid system to multiple trees to deter Douglas Fir

Beetles. IDL entomologist also established five trap sites for Douglas Fir Beetles, which will be monitored by park staff all summer.

- Park staff have started noxious weed control program.

THOUSAND SPRINGS STATE PARK – DAVID LANDRUM, PARK MANAGER

Top Items at This Time

1. The bridge at Ritter Island was repaired and has been re-inspected by ITD. We are waiting to hear what the new weight limits for the bridge will be. Currently it's approved for less than three tons and one vehicle at a time.
2. Staffing of both seasonal and full-time workers, as all parks are shorthanded.
3. Seal coating roads and trails at Malad Gorge. The roads are in need of repair. We have grass growing through cracks in the roads and trails making the cracks larger each year they go without repair. This has turned into a safety hazard and will only get worse as time goes by.
4. The barn on Ritter Island needs repair and paint. The weather over the years has taken a toll.
5. We need to repair the inside of each house on Ritter so that we can generate additional revenue. The roofs of the residences are in need of inspection and replacement. After each wind storm, shingles that have blown off these roofs have to be cleaned up.

Customer Service

- In April the Boy Scouts stayed at Niagara Springs on three different weekends. They provided a total of 30-man-hours of service by picking up limbs and trash, and cleaning out fire rings and BBQs. June brought four more scout troops to visit and stay at the park.

Utilization of Facilities

- Memorial Day weekend saw lots of visitors as well as three events: Brother Speed, who held their 45th annual event at Niagara Springs; and, at Billingsley Creek, the Flea Market at Garden Center and the Mountain Men Rendezvous.
- In May we had nine school field trips for a total of 327 students and 33 parents and students.
- We had two reunions and a medieval group at Niagara Falls in June for a total of 400 people.
- Malad Gorge and Niagara Springs were very busy on the weekends with weddings and reunions; Ritter Island saw steady foot traffic on the weekends as well.

Marketing

- Facebook has 624 Likes and had 443 reaches in July.

Park Manager's Report

- We are happy to have our seasonal staff to help with mowing and irrigating.
- Days heated up to over 100 degrees with more park visitors at each park unit finding a cool place by the water each day.
- In June we kept a close count of visitors with the ITD Idaho State Parks Passport (ISPP) counting those who went through our kiosk on the weekends and found the average number of visitors with the ISPP to be 56%.

Preservation of Natural Resources

- Noxious weed spraying is an ongoing project. Target weeds have been Scotch, Russian and Canadian Thistle, Puncture Vine, and Rush Skeleton weed. Idaho Power came to Malad Gorge to do some spraying and commented how well we have been keeping up on weed control.

THREE ISLAND CROSSING STATE PARK – NITA MOSES, PARK MANAGER

Top Items at This Time

1. Managing increased visitation with current staffing levels and budget.

Customer Service

- Three Island Crossing welcomed two experienced IDPR volunteers. One of the volunteers will be helping the maintenance crew. The other volunteer will be a great asset at the history center greeting customers and helping with the phones.
- Inadequate O&E budget: Three Island's utilities have increased significantly and require more than 70% of the park's current budget. Visitation continues to grow—requiring more upkeep and maintenance throughout the park.
- The park's older equipment is wearing out requiring the maintenance craftsman and park ranger to perform much upkeep. All of the tires on the vehicles, mules, and four-wheelers are also wearing out and must be replaced. The park's Toro mowers have a flawed design causing them to vapor lock and overheat easily in the hot temperatures.

Customer Service

- The Oregon Trail History and Education Center is open Tuesday through Sunday from 9:00 AM to 4:00 PM.
- Larger groups continue to frequent the History Center as well as the 1,705 visitors in June

Utilization of Facilities

- Spring break and nice weather had both campgrounds almost full to full on weekends in April and the campground and cabins have been consistently full since March.
- Several family reunions, miscellaneous groups, and a benefit fun run were held in May.
- Staff had not been taking traffic counter readings for some time due counter not being operational but has since been repaired.
- In June we began interpretive programs on weekends and Saturday evenings at the History Center.

Marketing

- Resale items have been replenished, and posting continues on Facebook to encourage visitors to come and see the park.

Park Manager's Report

- History Center enjoyed increased donations (from donation box) of \$291 vs. \$106 last year and retail sales of \$2,961 vs. \$1,762 last year.
- The office specialist II resigned after 17 years of service due to the position being cut to .75 FTE; she was forced to find full-time employment. With increasing visitation in the Oregon Trail History and Education Center and ever growing resale area, the office specialist has been trying to do a 40-hour-per-week job in 30 hours per week.
- Our maintenance craftsman position was also cut back to a .75 classified positions. Three Island has very long camping and day use seasons requiring the maintenance craftsman to perform as a park ranger while also only working 30 hours per week. All of this places extra burdens on the 12-month park ranger and manager to take on additional duties in the maintenance craftsman's absence.
- A PDF file of the aerial view of the back nine to the disc golf course was provided. Staff and maintenance foreman did a walk-through in preparation for the addition of nine holes to the disc golf course. Nine additional tee pads and baskets will be installed toward the end of July or the beginning of August.

Preservation of Natural Resources

- The metal bin recycling/removal project was completed and the bin was picked up.
- Staff continues to battle the ever-spreading invasive species: Knapweed, Rush Skeleton weed, and Puncture Vine.
- The trees in the park are need of extensive pruning which will require a lift to remove all the dead branches. We have been removing dead limbs as far up as we can with pole saws, but in frequently windy conditions many come down and pose a hazard to all.

SOUTH REGION MAINTENANCE CREW – PAUL FAY, FOREMAN

Eagle Island

- April – Worked to improve a one-half mile section of park trail located by the south channel of the Boise River. This section of trail was made unusable due to flood irrigation of the parks fields and occasional overflow from the Boise River. The region crew used the region's heavy equipment and raised the trail high enough to keep the trail dry and usable year round for the parks many customers.

Lake Walcott

- April and May – Work continued on the repairs to the interpretive shelter located in the northwest corner of the park. Support posts were installed, rotten posts were removed, and remaining posts were trimmed to remove various stages of rot. Concrete forms were installed with rebar for support, and concrete was poured under the posts to provide a new base for this shelter.

Massacre Rocks

- April – Two culverts were cleaned out near the dump station which were clogged and caused water to overflow the road and into the improved drain field of the dump station. We also excavated a new 300 foot channel to move water away from the dump station's drain field. We installed a new culvert by the fishing access day use area. This action helped to improve access to the park's trail system and help channel water away from the trail.

Thousand Springs

- May – Performed yearly road maintenance at the various units of Thousand Springs.

Harriman State Park and the Ashton-Tetonia Trail system

- June – Assisted with the installation of three CXT-type bathrooms along the Ashton-Tetonia Trail. The locations are: one at the Osborne Bridge, one at Marysville, and one at the Bitch Creek trailhead. The region crew excavated and leveled the holes in preparation of the installation of the CXTs. After installation the region crew cleaned up the sites and did the landscaping around the CXTs. The region crew also expanded the parking area at the Bitch Creek CXT site and performed the yearly maintenance on the park roads at Harriman State Park.

FISCAL QUARTERLY REPORT

FY 2014 – FOURTH QUARTER

Fiscal's Mission: The Fiscal program works to provide the best service possible to both internal and external customers. Program responsibilities include four major categories: 1) Budget and Financial Reporting; 2) Accounting, Accounts Payable and Accounts Receivable; 3) Purchasing, Fixed Asset Inventory and Fleet Management; and 4) State and Federal Grant Management. The program provides technical assistance in all areas to ensure the department complies with all applicable Federal and State laws, rules, policies and procedures.

Accomplishments for the period March 31, 2014 through June 30, 2014 include the following.

Budget and Financial Reporting

- Interviews and hiring process for vacant Financial Specialist, Sr. position. Cheryl Marshall was selected for the position and started 6/16/2014.
- Researched and processed 31 budget allocation adjustments and 4 budget appropriation adjustments.
- Loaded FY 2015 appropriation transactions into the statewide accounting system.

Accounting

- Accounts Payable processed 1,728 invoices with an average turnaround time of 21.2 days.
- Accounts Payable processed 269 Travel Express vouchers with an average turnaround time of 14.5 days.
- Accounts Payable processed 1,209 P-Card Transmittals totaling \$421,900.
- Researched and submitted 43 revenue adjustments, 88 expenditure adjustments and 20 Capital Development project budget adjustments.

Purchasing

- Completed the purchasing process of all the items on the FY14 capital purchasing list.
- Developed and submitted competitive bids for the remainder of the 2015 Registration Decals. Details of the significant cost savings should be provided in the Registration Program report.
- Completed request to Division of Purchasing for delegated agency purchasing authority.

State and Federal Grants

- Recruitment for new advisory committee members began in April. Press releases were sent and information posted on the web page. Information was sent to the Board for review in July. Six positions are open. Appointments will be made at the August Board meeting.
- Grant Manager attended the RMSPEC Conference in Coeur d'Alene in May. Kudos to our North Region Office for pulling off an informative meeting with great weather for our out of state guests.

- The Board approved the 2015 grant projects and staff sent out award letters and agreements as well as decline letters for RV, Waterways Improvement Fund, Cutthroat Plate Fund, Off-Road Motor Vehicle Fund, Motorbike, Recreational Trails Program, and Road and Bridge programs. Some Recreational Trails Program applications are pending final approval from the Federal Highways Administration.
- Connie Briggs accepted a position outside our agency. Interviews were conducted to hire a seasonal office specialist to work out of the headquarters office. Nicole Borhn accepted the position and started work on June 9, 2014.
- Staff has been busy closing or extending previous projects with agreements that expire at the end of the fiscal year. They have also been busy processing payments to meet end of fiscal year deadlines. New project agreements and files have been established and sponsors have started work.

Financial Officer

- Assisted Executive Staff with the development and implementation of the CEC / Pay Plan for FY 2015.
- Finalized the development of the FY 2016 budget. Prepared and presented FY 2016 budget presentation to the Parks and Recreation Board.
- Prepared and presented the FY 2014 3rd Quarter Financial Statements to the Parks and Recreation Board.
- Attended the Association of Government Accountants (AGA) Professional Development Conference.
- Finalized and implemented the FY 2015 budget allocations.
- Assisted staff with a variety of FY 2014 year-end activities.

☐ IDAPA RULE ☐ IDAPA FEE ☐ BOARD ACTION REQUIRED
☐ BOARD POLICY **X INFO ONLY, NO ACTION REQUIRED**

AGENDA
Idaho Park and Recreation Board Meeting
August 27-28, 2014
Red Lion Canyon Springs
Twin Falls ID

AGENDA ITEM: **Development Project Status**

ACTION REQUIRED: **Information Only**

PRESENTER: **James Thomas**

PRESENTATION

Mission

To provide design, engineering, and construction administration of all park capital improvements and major facilities maintenance, and to furnish technical assistance for the purpose of providing a high quality state park system for the citizens of Idaho.

Goals

- To plan and design facilities in a manner that reflects responsible stewardship of natural resources and protects public safety.
- To be responsive to sense, serve, and satisfy the needs of the public, administrative staff, operations staff, constituency groups, related programs, and others that look to us for leadership or assistance.
- To be proactive, motivated, and capable of identifying new opportunities.
- To budget for Capital Facility Needs in a manner that is honest and responsible to the parks and the citizens of Idaho.

BACKGROUND INFORMATION: The following narrative and the accompanying chart illustrating current projects, their status and progress comments are for Board Information.

COMPREHENSIVE PLANNING:

Adam Straubinger started in mid-June and has been working to familiarize himself with IDPR, the Development Bureau and the planner position.

- Finalize the Idaho Statewide Comprehensive Outdoor Recreation and Tourism Plan (SCORPT). The plan has been submitted and approved by NPS, continuing Idaho's eligibility for Land and Water Conservation Fund stateside grants for the next five years.
- Adam will be managing the Capital Inventory Needs (CIN) list, working with state, regional and park staff to prioritize projects and help draft budget request forms.
- He is currently working to refine the CIN list, and will be meeting with regional managers to ensure its accuracy.
- Adam is IDPR's primary contact for water rights and FERC.

Statewide Projects

300044 – Install Water Meters (Bruneau, Lucky Peak, E.I., Three Island)

This is a requirement by Department of Water Resources to record quantities of water being pumped from surface water sources and used for irrigation. An engineering consultant is under contract to evaluate and provide drawings and specifications for the flow meter installations. There is a delay with completion of installing the meters. The battery backup meters not acceptable with DWR.

300051 – Septic Repairs

New FY2015 project

North Region Projects

310121 – Priest Lake Indian Creek Campground Volunteer Sites

This project involved constructing volunteer sites. Three were constructed by North Region Crew over the summer of 2013. Waiting for pay request for gravel delivery before project can be closed.

310141 – Priest Lake Lionhead Docks, Ramp

This project was designed in the mid 1990's and was never built due to lack of funding. The original Engineering firm has been contacted to review the design documents and existing site conditions to insure the project can still be permitted and completed as envisioned. Engineering agreement completed; Project scope revised to Docks and Ramp. Project is on hold, awaiting approval of the 404 Permit.

310351 – Round Lake Well

New FY2015 project. Due to the budget amount, project will require advertisement for SOQ's.

310441 – TOC Fence in Smelterville

North Region Manager reviewing site conditions and fence options with the park manager.

310522 – Farragut Whitetail CG RR/Shower/ Locust Grove RR Renovations

Project complete. Waiting on final invoice. Buildings to be fully operational for the 2014 use season.

310541 – Farragut Sewer, Phase 2

The major portion of this project was designed during the first phase of Farragut's central sewer facility project. Phase 2 completes the remaining requirements of the Sewer Management Agreement with DEQ & Pan Handle Health District. Design engineering contract is in place. Pre-construction meeting took place in July. Contractor mobilized and construction is underway. Substantial completion expected December 2014.

310543 – Farragut Water System Improvements

Under construction and almost at 100% completion. Expect substantial completion August 2014.

310551 – Farragut Wave Attenuator Repair

New FY2015 project.

310641 – Old Mission Fill Floor Joints

This project will be combined with the Old Mission projects that have been funded for FY2015.

310651 – Old Mission Church Roof Repair

New FY2015 project. Will use one consultant on this project and 310641, 310652 & 310653. Bidding process will separate items on bid proposal.

310652 – Old Mission Parish House Interior Repairs

New FY2015 project.

310653 – Old Mission Church Interior and Exterior Repairs

New FY2015 project.

310823 – Heyburn Hawley's Boat Landing/Dock Pilings

Avista Grant project. The permit application will be submitted by North Region Manager. As funding allows, the scope will involve moving one finger of the docks to extend the length and drive two piles.

310841 – Heyburn Shelter & Restroom

Informal bids received May 2014. Project divided into 3 separate bids. Contracts issued and work expected to reach substantial completion by end of summer 2014.

310851 – Heyburn Hawley's Landing RR/Shower Repairs

New FY2015 project.

310921 – Higgens Point Docks & Shoreline Stabilization

Avista Grant project. Gangways are complete. Shoreline Stabilization permit application applied for in July 2014. Construction expected to begin fall 2014.

310941 – CDA Trail Work/Oasis/Chatcolet CG Trail CXT

Avista Grant projects. Double CXT on Chatcolet CG trail has been installed with some grading left to be done; Oasis/Shelter specs reviewed by North Region Manager and region crew will do follow up. RTP has been awarded. We are also waiting on SHPO & TIPO approval to move forward with the work. Permit application submitted to Panhandle Health Dept. Pending permit approval.

320131 – McCroskey Skyline Drive Trailhead CXT

CXT has been installed. Can close out project after landscape material has been spread.

320221 – Dworshak Freeman Creek Water System Upgrade

Bidding completed and contract issued. Construction is underway. Substantial completion anticipated December 2014.

320241 – Dworshak Host Sites Relocate

Engineer had site visit in July. Consultant is preparing conceptual plan for 2 new host sites.

320541 – Winchester Playground Renovation

Playground structure under review with park manager. Purchase order fall 2014.

320551 – Winchester Fishing Platform Repairs

New FY2015 project.

South Region Projects

330141 – Ponderosa Shoreline Stabilization

Engineering design is currently underway. 404 permit application applied for April 21, 2014. South Region crew will do the work. All permits have been approved; construction will proceed in fall 2014 when lake levels recede.

330201 – Eagle Island Gravel Extraction

Knife River is waiting to begin pending a market for the materials in the general area of Eagle Island. No work has been done to date.

330251 – Eagle Island Water Slide Repairs

New FY2015 project

330252 – Eagle Island Sewer Upgrade

New FY2015 project

330253 – Eagle Island Entrance Road
New FY2015 project

330431 – Lucky Peak Spring Shores Pump House Replacement

Contract awarded and construction was completed summer 2013. A request by park staff to add a chlorination system with remaining project funds was approved by the Region Manager and Development Bureau Chief. A chlorination system is being evaluated by a consultant and will be installed fall 2014.

330451 – Lucky Peak Shoreline Stabilization

New FY2015 project. Budget requires going through the SOQ process.

330542 – Bruneau Dunes Shutter Replacement

This project is short on funds. A consultant will be brought on for design. Project is being re-evaluated.

330642 – Three Island History Center Improvements

These are ongoing improvements to convert the current AV system from laser disk technology to blue ray. Funds being used are from a donation account that can only be used at the History Center. Development to work with the park manager to determine what is needed.

330741 – Lake Cascade Big Sage Bank Stabilization

A 404 permit has been received. Construction was underway but had to stop due to rise in lake spring pool elevation. Anticipate resuming construction in September when lake levels recede. The project is approximately 50% complete and should be at substantial completion by fall 2014.

330742 – Lake Cascade Sugar Loaf Docks, Ramp, Erosion Control

SOQ process for design consultants completed. Engineering consultant expects construction documents and permit applications August 2014.

340351 – Ritter Island House Renovation

New FY2015 project. Scope of project is to upgrade 3 houses on Ritter Island for renting purposes. The houses have abatement and lead paint issues that need to be addressed.

340441 – Malad Gorge Water System Study

Anticipate an evaluation report draft by 8/7/14.

East Region Projects

340621/340631 – Lake Walcott Campground Electrical Upgrades

In construction phase and going well. Anticipate substantial completion by fall 2014.

340622 – Lake Walcott Ranger House

Received approval letter from BOR. Consultant is working on design. Anticipate fall 2014 construction.

340641 – Lake Walcott Irrigation Improvements

Park staff is working with BOR on the relocation of irrigation pumps that currently serve the park. Project is being evaluated by a consultant.

350141 – Massacre Rocks Septic System Replacement

Request for fee proposal for engineering services is underway. Design and DEQ permitting completed. Construction over the summer/fall 2014.

350331 – Bear Lake East Beach RR Renovation

Purchase, delivery and installation of 2 CXT restrooms at North Beach completed. A third CXT was delivered to the East Beach campground in the fall 2013. Will complete the conversion of the composting CXT toilet at North Beach to a vault toilet. Revised work scope to include relocation of the electrical panel and the demolition and removal of the old vault toilet in the East Beach campground.

360141 – Harriman Forman's House Roof Repairs

Construction is 80% complete. Will be complete by 9/1/2014.

360142 – Harriman Jones House Foundation

Project is complete and Development waiting on final invoice.

360151 – Harriman Silver Lake Trailhead Vault Toilet

New FY2015 project. CXT location is being evaluated. CXT to be ordered off the State Contract.

360221 – Henrys Lake Campground

New campground opened the week of June 30, 2014. Final punch list to RR/Shower building to be completed in September.

360241 – Henrys Lake Boat Launch Improvements

Project completed.

360242 – Henrys Lake Seasonal Housing

Region and Park Managers re-evaluating project scope.

360251 – Henrys Lake 2 New Camper Cabins

New FY2015 project.

360252 - Henrys Lake RR & Camp Loop Improvements.

New FY2015 project. Fee proposal coming from consultant.

360441 - Ashton-Tetonia Restrooms

Three new CXT's have been installed.

STAFF RECOMMENDATIONS: Information only

Project Number	Project	Milestones	Budget	Spent to Date/Enc. Committed	Balance
DEVELOPMENT PROJECTS BY REGION					
STATEWIDE					
300044	Install Water Meters (Burneau, Lucky Peak, Three Island Eagle Island)	This is a requirement by Dept of Water Resources to record quantities of water being pumped from surface water sources and used for irrigation. An engineering consultant is under contract to evaluate and provide drawings and specifications for the flow meter installations. There is a delay with completion of install the meters. The battery backup meters not acceptable with DWR.	40,000	12,611	27,389
300051	Statewide Septic Repairs	New 2015 project.	150,000	0	150,000
NORTH REGION					
310121	Priest Lake Indian Creek Campground Volunteer sites	This project involved constructing volunteer sites. Three were constructed by North Region Crew over the summer of 2-13. Waiting for pay request for gravel delivery before project can be closed.	35,000	22,588	12,412
310141	Priest Lake Lionhead Docks & Ramp	This project was designed in the mid 1990's and was never built due to lack of funding. The original engineering firm has been contracted to review the design documents and existing site condition to insure the project can still be permitted and completed as envisioned. Engineering agreement completed; project scope revised to docks and ramp. Project is on hold, awaiting approval of the 404 permit.	200,000	12,298	187,702
310351	Round Lake Well	New 2015 project. Due to the budget amount, project will require advertisement for SOQ's.	350,000	0	350,000
310441	Trail of the CDA Fence in Smelterville	North Region Manager reviewing site conditions and fence options with the park manager.	31,000	0	31,000
310522	Farragut Locust Grove/Whitetail CG RR/Shower Renovations	Project complete. Waiting on final invoice. Buildings fully operational for this 2014 use season.	278,839	259,462	19,377
310541	Farragut Sewer - Phase 2	The major portion of this project was designed during the first phase of Farragut's central sewer facility project. Phase 2 completes the remaining requirements of the Sewer Management Agreement with DEQ & Pan Handle Health Dist. Design engineering contract is in place. Pre-construction meeting took place in July. Contractor mobilized and construction is underway. Substantial completion expected Dec. 2014.	1,300,000	824,733	475,267
310543	Farragut Water System Improvements	Under construction and almost at 100% completion. Expect substantial completion by end of August 2014.	33,809	12,997	20,812
310551	Farragut Wave Attenuator Repair	New 2015 project.	100,000	0	100,000
310641	Old Mission Fill Floor Joints	This project will be combined with the Old Mission projects that have been funded for FY2015.	15,000	0	15,000
310651	Old Mission Church Roof Repair	New FY2015 project. Will use one consultant on this project and 310641, 310652 & 310653. Bidding process will separate the projects on bid proposal.	160,000	0	160,000
310652	Old Mission Parish House Interior Repairs	New FY2015 project.	50,000	0	50,000
310653	Old Mission Church Interior & Exterior Repairs	New FY2015 project.	40,000	0	40,000
310823	Heyburn Hawley's Boat Landing/Dock Pilings	Avista Grant project. The permit application will be submitted by North Region Manager. As funding allows, the scope of work will involve moving one finger of the docks to extend the length and drive two piles.	4,113	0	4,113
310841	Heyburn Shelter & Restroom	Informal bids received May 2014. Project divided into 3 separate bids. Contracts issued and work expected to reach substantial completion by end of summer 2014.	200,000	8,440	191,560

Project Number	Project	Milestones	Budget	Spent to Date/Enc. Committed	Balance
310851	Heyburn Hawleys Landing RR/Shower Repairs	New FY2015 project.	25,000	0	25,000

Project Number	Project	Milestones	Budget	Spent to Date/Enc. Committed	Balance
310921	Higgins Point Docks & Shoreline Stabilization	Avista Grant project. Gangways are complete. Shoreline Stabilization permit application applied for in July 2014. Construction expected to begin fall 2014.	102,815	21,326	81,489
310941	CDA Trailhead Facilities Access	Avista Grant projects. Double CXT on Chatcolet CG trail has been installed with some grading left to be done; Oasis/Shelter specs reviewed by North Region Manager and region crew will do follow up. RTP has been awarded. We are also waiting on SHPO & TIPO approval to move forward with the work. Permit application submitted to Panhandle Health Dept. Pending permit approval.	82,025	34,722	47,303
320131	McCroskey Skyline Drive Trailhead CXT	CXT has been installed. Can close out project after landscape material has been spread.	25,000	20,393	4,607
320221	Dworshak Freeman Creek Water System Upgrade	Bidding completed and contract issued. Construction is underway. Substantial completion anticipated December 2014.	250,000	107,409	142,591
320241	Dworshak Host Sites Relocate	Engineer had site visit in July. Consultant is preparing conceptual plan for 2 new host sites.	50,000	0	50,000
320541	Winchester Playground Renovation	Playground structure under review with park manager. Purchase order fall 2014.	50,000	0	50,000
320551	Winchester Fishing Platform Repairs	New FY2015 project.	100,000	0	100,000
SOUTH REGION					
330141	Ponderosa Shoreline Stabilization	Engineering design is currently underway. 404 permit application applied for April 21, 2014. South Region crew will do the work. All permits have been approved; construction will proceed in fall 2014 when lake levels recede.	40,000	7,450	32,550
330201	Eagle Island Gravel Extraction	Knife River is waiting to begin pending a market for the materials in the general area of Eagle Island. No work has been done to date.	1,000,000	90,772	909,228
330251	Eagle Island Water Slide Repairs	New FY2015 project	150,000	0	150,000
330252	Eagle Island Sewer Upgrade	New FY2015 project	440,761	0	440,761
330253	Eagle Island Entrance Road	New FY2015 project	250,000	0	250,000
330431	Lucky Peak Spring Shores Pump House Replacement	Contract awarded and construction was completed summer 2013. A request by park staff to add a chlorination system with remaining projects funds was approved by the Region Manager and Dev Bureau Chief. A chlorination system is being evaluated by a consultant and will be installed fall 2014.	100,000	66,610	33,390
330451	Lucky Peak Shoreline Stabilization	New FY2015 project. Budget requires going through the SOQ process.	475,000	0	475,000
330542	Bruneau Dunes Shutter Replacement	This project is short on funds. A consultant will be brought on for design. Project is being re-evaluated.	16,000	0	16,000
330642	Three Island History Center Improvements	These are ongoing improvements to convert the current AV system from laser disk technology to blue ray. Funds being used are from a donation account that can only be used at the History Center. Development to work with the new manager to determine what is needed.	17,126	0	17,126
330741	Lake Cascade Big Sage Bank Stabilization	A 404 permit has been received. Construction was underway but had to stop due to rise in lake spring pool elevation. Anticipate resuming construction in September when lake levels recede. The project is approximately 50% complete and should be complete in fall 2014.	237,669	236,446	1,223
330742	Lake Cascade Sugar Loaf Docks, Ramp, Erosion Control	SOQ process for design consultants completed. Engineering consultant expects construction documents and permit applications August 2014.	600,000	25,563	574,437

Project Number	Project	Milestones	Budget	Spent to Date/Enc. Committed	Balance
340351	Ritter Island House Renovations	New FY2015 project. Scope of project is to upgrade 3 houses on Ritter Island for renting purposes. The houses have abatement and lead paint issues that need to be addressed.	16,000	0	16,000
340441	Malad Gorge Water System Study	Anticipate an evaluation report draft by end of August 2014.	25,000	0	25,000

Project Number	Project	Milestones	Budget	Spent to Date/Enc. Committed	Balance
EAST REGION					
340621/340631	Lake Walcott Campground Electrical Upgrades	In construction phase and going well. Anticipate substantial completion by fall 2014.	377,504	288,056	89,448
340622	Lake Walcott Ranger House	Received approval letter from BOR. Consultant is working on design. Anticipate fall 2014 construction.	146,368	10,810	135,558
340641	Lake Walcott Irrigation Improvements	Park staff is working with BOR on relocation of irrigation pumps that currently serve the park. Project is being evaluated by a consultant.	30,000	0	30,000
350141	Massacre Rocks Septic System Replacement	Request for final fee proposal for engineering services is underway. Design and DEQ permitting completed. Construction over summer/fall 2014.	150,000	0	150,000
350331	Bear Lake East Beach RR Renovation	Purchase, delivery and installation of 2 CXT restrooms at North Beach completed. A third CXT was delivered to the East Beach campground in fall 2013. Will complete the conversion of the composting CXT toilet at North Beach to a vault toilet. Revised work scope to include relocation of the electrical panel and the demolition and removal of the old vault toilet in the East Beach campground.	120,000	92,298	27,702
360141	Harriman Forman's House Roof Repairs	Construction is 80% complete. Will be complete by 9/1/2014.	15,000	738	14,262
360142	Harriman Jones House Foundation	Project is complete and Development waiting on final invoice.	20,000	738	19,262
360151	Harriman Silver Lake Trailhead Vault Toilet	New FY2015 project. CXT location is being evaluated. CXT to be ordered off the State Contract.	20,000	0	20,000
360221	Henrys Lake Campground	New campground opened the week of June 30, 2014. Final punch list to RR/Shower building to be completed in September.	2,100,241	1,879,008	221,232
360241	Henrys Lake Boat Launch Improvements	Project complete.	220,000	209,349	10,651
360242	Henrys Lake Seasonal Housing	Region & Park Managers re-evaluating project scope.	100,000	0	100,000
360251	Henrys Lake 2 New Camper Cabins	New FY2015 project.	30,000	0	30,000
360252	Henrys Lake RR & Camp Loop Improvements	New FY2015 project. Fee proposal coming from consultant.	160,000	0	160,000
360441	Ashton-Tetonia Restrooms	Three new CXT's have been installed.	49,295	49,295	0

MANAGEMENT SERVICES QUARTERLY REPORT
April – May – June 2014

MANAGEMENT SERVICES ADMINISTRATOR – ANNA B. CANNING

IDPR Mission

Improve the quality of life in Idaho through recreation and resource stewardship.

Goals

1. Work with the Director and all staff to leverage limited resources to provide the best possible recreation experience and manage natural resources for future generations.
2. Support the efforts of the Operations Division to meet the Department's mission by providing leadership and direction to registration, reservation, grants, fiscal, sponsorship, MIS, IT, development and facility programs.
3. Provide management services staff with the necessary tools to succeed in their jobs.
4. Work with the Operations Division Administrator to identify needs of the operations staff, and assist in meeting those needs.

Management Services Administrator's Report

The primary focus of the 2nd quarter of 2014 was the strategic plan and working with the Director and Board on hiring a new Director. Other specific tasks include:

- Worked with Modernization team to develop necessary IDAPA changes to implement HB 492, finalize project charter and project communication plan, and develop detailed list of work plan tasks and dependencies.
- Facilitated removing roadblocks to meeting Sponsorship Coordinator work plans and developed system to weekly monitor expectations and priorities.
- Assisted in budget process decisions.
- Met with ITD participants to consider Hoo Doo land exchange
- Visited Dworshak, McCroskey, Eagle Island, Lucky Peak, and Priest Lake state parks.
- Facilitated final edits to the P-Card Policy
- Attended a portion of the Reservation Program new user training.
- Attended Reservation Program campground reservation and point of sale refresher course in Northern Idaho.
- Attended Society of Outdoor Recreation Professional meeting in San Francisco. Learned more about the SCORP process and work of other states relative to State Park planning and programming.
- Completed draft strategic plan, finalized the plan based on Board comments, and submitted the final plan to the Governor's staff.

- Initiated conversation on the utility of benefitted seasonal positions and developed informal considerations for moving forward in rehiring into those positions.
- Worked with Grants manager on advisory committee recruitment and reporting to the Board.
- Attended meeting with Director Merrill regarding possible project with the Historical Society, Tourism, and Karen Day.
- Attended meetings regarding the Eagle Island Sewage Lift Station and considered LWCF consequences of having the facility within the 6(f) boundary.
- Attended two meetings to discuss economic impact study proposals.
- Wrote letter to Valley County Commissioners regarding the impact of their proposal to require snowmobile stickers for fat-tire bikes.
- Met informally with IRC representatives to discuss fat-tire issues and registration modernization.
- Continued to participate in the Reservations fee rules to fully understand the process.
- Assisted the Director in a variety of tasks including review of the board minutes, completing day-to-day administrative tasks, dealing with discipline issues, and assisting in the recruitment process for the new Director.
- Recreation Registration Program update:
 - The annual snowmobile distribution totaled \$1,028,341.21. Last year, we hit \$1.1 million. IDPR Registration had all available data entry complete for winter recreation transactions. There is about 2% of unreturned inventory that is currently being collected from retail vendors. This is a major improvement for staff compared to last year's snowmobile distribution.
 - As a year in review, IDPR Registration finished the fiscal year at \$7.3 million in distributed funds to statewide recreation programs. In comparison, we distributed \$6.3 million last year and \$6.9 million the year before.
 - IDPR Registration has implemented the July 1 legislative changes. There are no issues at this time. There is an FAQ page available online and for registration staff to address inquiries, but the statutory changes has not prompted much attention other than a few phone calls from vendors seeking clarification on the elimination of boat proration.
 - IDPR Registration is preparing for the 2015 season. We were able to significantly reduce sticker inventory costs by changing materials and print shop vendors. Total savings will be available from the purchasing department soon. In addition, IDPR Registration changed the packaging from individually cut stickers to fanfold with perforation to reduce loss of inventory at the retail vendor level.
- Sponsorship Program update:
 - Created internal database of potential funding sources for nearly 200 businesses and foundations to target for grants and sponsorship solicitation. This database is nearly complete and ready for IDPR leadership to match

projects to funding and prioritize requests just in time for fall and winter funding rounds.

- Created internal database of approximately 200 park special events. Adding additional events as they are reported.
- Developed base partnerships and identified major grant sources for original music series in Idaho State Parks to launch in spring 2015. Working with several park locations, Idaho Songwriter's and Idaho Commission on the Arts. Researching logistics and costs.
- Researching IDPR events, programs, and ticket sales options
- Arranged for introductory meeting on fundraising via bow hunting in Castle Rocks.
- Naming program researched and outlined for pilot project to begin with benches at Castle Rocks.
- Creating YouTube sponsorship outreach video for fundraising outreach (Land of the Yankee Fork).
- Developing plans for social media crowd funding trial on Indiegogo campaign, (Special Use Groups using Dworshak Kitchen and needed oven replacement)
- Submitted Idaho Power Proposal for Kokanee Cove and Music Series. Positive reply but still awaiting final decision.
- Approached Wells Fargo Contributions Manager: responded well to several projects. I am currently researching viability with staff members. Requested proposals could include: Eagle Island Sewer System, Boise greenbelt extension, and others.
- Met with Midas Gold representative and introduced Midas Gold Leadership to the Recreation Program manager and Lake Cascade Park Manager
- Approached Idaho Humanities Council, Idaho State Historical Society and Idaho Heritage Trust regarding grant requests being developed for Land of the Yankee Fork, oral or video history work and Kilns restoration.

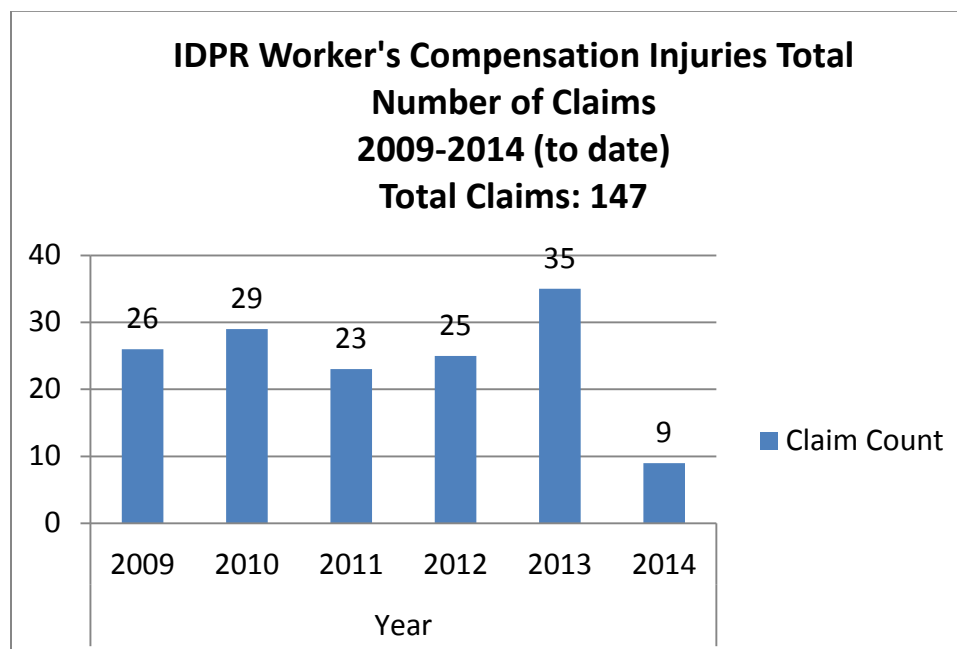
HUMAN RESOURCE REPORT

August 2014

HR Unit's Mission: IDPR's human resources program strives to provide the best in human resource management by recruiting highly qualified candidates as well as diverse and motivated volunteer candidates and works to maintain a work environment that is safe, respectful of each individual and clear in expectations.

HUMAN RESOURCES: Kristy Bobish-Thompson, Human Resource Officer

- Assist management with interviews for vacant positions.
- Serve on the statewide Green Team (HR Managers collaboration on best practices).
- Monitor positions to determine need for reclassifications.
- Conduct Exit Interviews for employees leaving the agency.
- Monitor and analyze Turnover data for trends, retention strategies.
- Manage the Department's Random Drug Test program.
- Serve as the administrator and help desk support for the Incident Reporting System (IRS).
- Continue to manage the Workplace Safety Team including the Operations and Management Services Division Administrators, Region Managers, Recreation Bureau Chief, Fiscal Officer and Human Resources Officer. Implementing direction and infrastructure established by original Safety Committee, including policy revision, local Safety representatives in each park and program, Worker Comp and Incident Report monitoring, regular training and information dissemination.
- Oversee policy review/updates for agency.
- Prepare and provide annual and as-needed training.
- Monitor Worker's Compensation claims and provide coordination among employees, management, and State Insurance Fund for progress and return to work information. Provide agency update on Worker's Comp and general safety information at region meetings and Director's newsletter.
- Worker's Compensation Data for 2009-2013 (to date):



		Total Losses			
	Claims Count	Total Compensation	Total Medical	*Total Losses	# Current Open Claims
2009	26	\$66,512	\$166,614	\$233,126	0
2010	29	\$81,078	\$185,863	\$267,287	0
2011	23	\$57,615	\$141,415	\$211,965	0
2012	25	\$16,835	\$76,512	\$102,414	0
2013	35	\$7,761	\$51,080	\$195,540	3
2014	18	\$5,010	\$14,878	\$47,001	4

*Total Losses figures do not include reserves which are costs set aside for ongoing claims.

TURNOVER

Fiscal Year	Begin Count	End Count	Avg Emp	Number of Separations	Turnover Rate
2011	130	136	133	11	8.3%
2012	136	135	135.5	11	8.1%
2013	135	139	137	17	12.4%
2014	139	134	136.5	19	13.9%
2015	134	135	134.5	0	0.0%

*Classified positions only

PAYROLL & RECRUITMENT: Denice Gardner, Personnel Technician

- Maintain payroll and benefit services for all employees, process new hires and separations as well as any demographic changes throughout the year.
- Continue to provide information to management and staff concerning budget, work hours, salaries, etc.
- Coordinate the recruitment process and assist with interviews, reference checks and new hire processes.

HIRES during the last three months:

Headquarters

- ❖ Planner – Adam Straubinger – new hire to replace Connie Vaughn who retired in December
- ❖ Financial Specialist Sr. – Cheryl Marshall – new hire to replace Hadley Wagner who retired in March
- ❖ IT Information Systems Tech. – Joseph Beaney - new hire to replace Tony Garey who resigned in June.
- ❖ Director – David Langhorst

North Region

- ❖ Manager Assistant, Winchester – Steve Kuskie promoted to replace Nita Moses who promoted to Three Island Manager 3
- ❖ Ranger, Hells Gate – Greg Hodapp – new hire to replace Nate Blackburn who promoted to Farragut Manager Asst.
- ❖ Ranger, Dworshak – Kristeen Jakovac – seasonal hired into classified position to replace Michelle East who promoted to Manager 2
- ❖ Ranger, Old Mission – Samuel Hoggatt – new hire to replace Scott Skinner who resigned in April
- ❖ Engineer Technician, Sr. – Pat Dingman transferred to replace Tom Joyner who retired in July (this position is based in the North Region office, but reports back to headquarters)

South Region

- ❖ Yankee Fork, Ranger – Joseph Blackburn – new hire to replace Joni Hawley who was promoted to Manager 2 in September
- ❖ Lake Cascade, Ranger – Edgar Rae – transferred from Bruneau Dunes to replace Steve Kuskie who promoted to Winchester
- ❖ Three Island, Office Specialist 2 – Janae Cole – New hire to replace Kathy Pruett who resigned in July

CURRENT VACANCIES:

North Region

- ❖ Recreation Site Maintenance Foreman – Pat Dingman transferred to Engineer Technician, Sr. position.

South Region

- ❖ Bruneau, Ranger – Edgar Rae transferred to Cascade

SEASONAL EMPLOYEE RECRUITMENT:

- Volunteer Coordinator recruiting for end of season employee vacancies through the IDPR on-line application process and Idaho Dept. of Labor.
- Performed background checks on 2018 seasonal employees
- Processed 400 on-line seasonal employment applications

VOLUNTEER PROGRAM: Kathryn Hampton, Volunteer Services Coordinator

- Processed 334 volunteer applications
- Continuing to recruit volunteers to fill late season vacancies for campground hosts, visitor services hosts, and maintenance hosts
- Assisted management with several volunteer performance/communication actions
- Assisted volunteer applicants with questions and issues related to working with IDPR.
- IDPR Volunteer Services Coordinator continues to serve on the national board of directors for the Association of Leaders in Volunteer Engagement (AL!VE)
- Member of the Leadership Team for the Southwest Idaho Directors of Volunteer Services (SWIDOVs)
- Maintaining web-based volunteer management record-keeping on all volunteers.

- Administering the Idaho State Parks & Recreation Volunteer Facebook page.
- Managing the IDPR on-line seasonal and volunteer application process.
- Presentation to BSU Service Learning Students about IDPR volunteer program.
- Accepting volunteer applications for the 2015 season!
- Assisting HR Director develop orientation and training for seasonal employee & volunteer supervision.
- Conducting background checks on all volunteers and seasonal employees through a web-based company called Volunteer Advantage.
- Provided Volunteer Coordinator subject matter expertise to Idaho Dept. of Insurance by grading 34 application exams.
- Assisted Old Mission State Park in interviewing/selecting new ranger
- Provided volunteer orientation/training to volunteers in the North Region
- Performed 136 background checks on volunteers
- Currently partnering with 336 individual volunteers and 38 volunteer groups

**MANAGEMENT INFORMATION SYSTEMS
PROGRAM QUARTERLY REPORT
April May June 2014**

MANAGEMENT INFORMATION SYSTEMS (MIS) KEVIN ZAUHA

Mission

The MIS mission is to provide for the IDPR's information systems needs that spring from the Agency's strategic plan. This is accomplished through the support and development or acquisition of application systems and the implementation and support of an appropriate technology infrastructure.

Accomplishments for the past quarter include:

Information Systems

MIS staff (Vicki Heazle and Kevin Zauha) joined the Recreation Registration Modernization project team as the Information Systems and Technologies resource for the project.

MIS worked with the Idaho Transportation Department (ITD) to address issues associated with the statistical data necessary to monitor and measure the success of the Park Passport sales. We continue to receive Passport sales data and work continues to validate that data. A repository is now in place for storing the Passport sales data and Vicki is in the process of designing a suite of reports to provide ready access to the Passport Program status as required.

Infrastructure Support

The MIS Infrastructure Support Staff received 354 helpdesk service requests over the course of the fourth quarter of FY14 and closed 325 helpdesk tickets.

The MIS Infrastructure Support Staff completed the upgrades of all desktops from Windows XP to the Windows 7 Operating System. This consisted of upgrading the hardware for approximately 90 desktops in Parks statewide and at Headquarters. Approximately 85% of the Agency's laptops have been upgraded to Windows 7.

We worked with the Office of the Chief Information Officer (OCIO) for the state to transition our Email environment to Microsoft Exchange 2013. The OCIO continues to work out the bugs in their upgrade installation with some minor impact to IDPR's email.

We continue to review broadband service providers at all Park locations with the intent of finding the best affordable network connections. As a part of this process, Exede

Satellite dishes were successfully installed at Dworshak State Park, the Big Eddy Unit and the Freeman Creek Unit, to upgrade the older satellite units at those locations.

Each of our park locations now has a file-share system in place. We are in the process of completing and testing the backup configurations for each park.

Time Warner (the new broadband service provider for Headquarters) delayed that installation until July. (It has been successfully completed.)

RESERVATION PROGRAM QUARTERLY REPORT

April – May - June 2014

RESERVATION PROGRAM – TAMMY KOLSKY

Mission

The Reservation program's scope of responsibility includes oversight of IDPR's public camping resources, the Agency's statewide retail sales, and the management of the flow of revenue from all field locations and most other revenue sources (with the exception of the Recreation Registration Program and any Federal or grant funding sources). The Reservation Program is responsible for all policies and procedures as they relate to the camping public's interaction with IDPR campsites and facilities.

Program Manager's Report

Program Manager emphasis over the past three months has been on the following:

- Worked with IDPR MIS on visitation tracking needs, this effort will result in a database to be used in reporting on IDPR's Campsite occupancy, as well both camper and day use visitation.
- Worked with Division of Financial Management (DFM) and Office of Administrative Rules (OAR) on various pending rule changes that will bring IDPR rules into compliance with 2014 legislative changes to Statute.
- Attended Legislation Bill Drafting training.
- Attended Rocky Mountain State Park Executives conference.
- Worked with IDPR's reservation service provider to program 2015 fee increases. The new fees include increases to serviced campsites and apply non-resident fees.
- Changed call center processes to require capturing campsite primary occupant information. This is necessary as resident/nonresident fees will be derived by site occupants' address.
- Provided additional training to call center staff on group reservation processing to include capturing primary occupant information.
- Worked with the Division Administrator of Management Services, Division Administrator of Operations, and IDPR's PIO to develop a strategic plan for Park Retail Operations. The team objectives are threefold. First, to identify and analyze the current retail processes used. Second, to provide a set of guiding principles that will help move towards a more standardized operation of IDPR retail stores. Third, to identify a methodology that empowers park retailers to select and display products that will maximize their revenues.
- Provided training to IDPR field staff on the use of the reservation and retail sales software and the new retail strategic plan. Training focused on new system functionality, program business rules, and upcoming fee changes.
- Serving as project manager on the modernization of the Recreational Registration Program.
- Working to implement Point of Sale (POS) inventory tracking for Montana State Parks. This process is using the same business rules and functionality that we have implemented in our reservation application for Idaho State parks.

- Presented a track on the new processes for group reservations and the 2015 fee changes. Additionally, spoke to the value of—and how to use—an Idaho State Parks Passport at the Good Sam's Jamboree held in Mountain Home.
- Providing day-to-day support for external and internal customers for both IDPR and Montana FWP.
- Monitoring system usage by State Parks Passport holders. Usage for April, May, June was as follows:

14,077 reservations were processed during the quarter booking 32,377 nights. Of those reservations:

- 5,479 reservations were for customers who claimed the Idaho State Parks Passport discount, this discount was applied to 12,413 nights.
- 1,054 reservations processed were for customers who claimed an MVEF Annual sticker, this discount was applied to 2,592 nights.
- 17,372 of the nights booked with no discount claimed, meaning for these nights the customer has for now paid the additional \$5 per night for MVEF on one vehicle.

Program staff emphasis over the past three months has been on the following:

- Worked on the implementation and testing of IDPR's 2015 fee increases.
- Performed user acceptance testing on new system functionality. The new functionality was deployed into production on April 23rd, included in that deployment was version one (1) of a field mobile application.
- Assisted in developing and delivering annual field staff training.
- Provided ongoing coaching and training of IDPR field staff on new system functionality.
- Performed an account code review of Montana State Parks accounting structure to accommodate changes made to their organizational structure.
- Performed a comparative analysis on all Montana State Parks store inventories to ensure an accurate data transmission to Reserve America. The analysis addressed the naming conventions, product class assignments, vendor assignments as well as eliminating duplicate products.
- Performed weekly joint call monitoring with ReserveAmerica quality assurance team for both the Idaho and Montana contracts.
- Performed monthly call monitoring with ReserveAmerica customer service (SRT) for both the Idaho and Montana contracts. This effort is in response to a need to better train SRT staff in how to better handle escalated calls.
- Performed remote call monitoring independently for call center agent's knowledge on Idaho State Parks new Passport Program as well as for adherence to IDPR and Montana FWP policy and reservation quality.
- Provided day-to-day support for external and internal customers for both IDPR and Montana FWP.
- Managed refunds in the system as follows:
 - Ensured amounts to be refunded were valid

- Processed credit card refunds for the call center
- Submitted all check refunds to fiscal staff for State-issued warrant processing
- Posted all check refunds with warrant number and date created information into the reservation system.
- Oversaw customer voucher program to ensure that it was being used for its intended purpose.

Retail Management

- Monitored the store database software to ensure policies and procedures put into place are being followed; and that the integrity of the data regarding IDPR retail inventory is accurate. The data integrity is critical in that this is the tool that IDPR uses to:
 - Report an accurate inventory at the agency level on June 30 of each year for the State of Idaho Consolidated Audited Financial Report (CAFR)
 - Determine the value of resale items at all locations for insurance purposes
 - Provide the ability to calculate “inventory shrinkage” (loss, damage, theft, etc.) by site and item
 - Provide the ability to calculate turnover rates on retail items by site, by item, in order to increase net revenue across the agency
- Provide day-to-day management of entering all new store items for field staff.
- Entered replenishments and printing bar code labels for field staff upon request.

Communications / Marketing

August 2014 Board Report

Accomplishments / Tasks Underway

□ Marketing / Advertising

- Business / Marketing Plans
 - Management of these efforts, ongoing, may reside in another program
- The Passport marketing campaign 2015 /2016:
 - The marketing plan is being revised to include an emphasis in earned media and strategic television and radio placement decisions based on ITD sales data.
 - Rights to “I’ve Been Everywhere, Man” dissolve December 31, 2014
 - We will not be renewing the rights to this song
 - New television /radio spots will need to be created
 - Going to test new strategic partnership with automobile / RV dealerships to help promote
 - Successful partnership with IPTV brought televised Passport message to North Idaho.

□ Branding

- Working with artist Ward Hooper to design a custom 50th Anniversary logo for the agency to use as promotion during celebration
- Retail programs are still in the process of ordering branded items to carry in park Nature Stores

□ Events

- Organizing the 50th Anniversary of the Idaho Department of Parks and Recreation
 - Assembled internal team
 - Preparing promotion plan for execution beginning January 1, 2015

□ Social Media

- Facebook following on all agency, park and program pages continues to grow
- Recently, the Eagle Island State Park Facebook page proved to be the best communication tool to help share news regarding Norovirus, park closure and re-opening.
- Social Media continues to be a great tool in spreading the word about program classes and park promotions.

□ General Media

- Very busy news summer June – July with Norovirus at Eagle, fires and a new director.
- Organized Journalist tours of parks in both North Region and South Region in conjunction with Tourism.

- ❑ **Idaho Parks and Recreation “Welcome Kits” (All agency informational guide)**
 - 2014/2015 Welcome Kits are in-park, region and DMV locations.
 - It’s a huge benefit to work with Good Solutions Group who supplies these valuable informational tools at no cost to IDPR.
- ❑ **Idaho History in Idaho State Parks Classroom Kits**
 - Still in process / Ongoing project: It is the programs intent to modify the current IDPR Classroom Kits and curriculum to make them available once again for use in Idaho Fourth Grade classrooms.
- ❑ **OHV Outreach “Stay on Trails” Campaign**
 - www.idaho-ohv.org
 - Group was successful in becoming grant advisory committees top priority. Funds will be available to modify and further campaign with the Boards approval of these grant funds.
 - New program emphasis on helmet use
- ❑ **Be Outside, Idaho Children in Nature**
 - Group still seeking a part-time facilitator to manage the day-to-day inner-workings.
- ❑ **Miscellaneous**
 - Director Information
 - IRPA Presentation
 - Stakeholder list development
 - Miscellaneous boating publications: Idaho Paddle Sports, Whitewater Wisdom
 - Boating Class Advertising / Wear It! 2014
 - Continue to handle all agency-related information requests (public information act) and serve as primary media contact
 - Misc. agency brochure revisions, news releases, web postings
 - Continue to handle special projects as assigned – presentations legislative needs, talking point needs, speeches, graphics, website updates

RECREATION RESOURCES BUREAU QUARTERLY REPORTS
APRIL, MAY, AND JUNE 2014

RECREATION RESOURCES BUREAU – DAVE CLAYCOMB, BUREAU CHIEF

BOATING PROGRAM: DAVE DAHMS

The following is a list of activities that have been recently completed by the Boating Program. This is in addition to the routine tasks of answering questions from the general public and county marine deputies, grant administration, preparation for various training courses, attending county waterways committee meetings, attending user group meetings, and ordering of equipment and supplies.

- ✦ The annual Marine Law Enforcement Academy was held in Boise, May 1 – May 8. The academy is intensive eight-day training for new marine deputies and includes both classroom and on-the-water scenario based training (16 students). Staff also coordinated the Personal Watercraft Rescue Course in Orofino in June (14 students). Several officers from neighboring programs (Lake County Sheriff's Office in Montana and Nevada Dept. of Wildlife) also attended the training.
- ✦ Staff participated in a week-long outreach effort in south-central Idaho during National Safe Boating Week in May. The week started with the installation of four life jacket loaner stations in the Twin Falls and Burley area. Staff participated in an inflatable life jacket blow-off (part of a national effort) in Twin Falls at Centennial Park. Other outreach events conducted during this week included safety booths at Sportsman's Warehouse in Twin Falls, Century Boat Land in Twin Falls, Cal Ranch in Burley, and the annual Fisherman's Breakfast in St. Anthony. Other outreach events during this quarter included the Payette River Games in Cascade and Ducks Unlimited Youth Fair in Homedale. The Program also partnered with the Payette River Bassmasters to provide life jackets for their annual youth event.
- ✦ The program provided materials for the installation of two life-jacket loaner stations at Lake Cascade State Park. Staff worked with local partners to install three stations in Bonner County and one station at Deyo Reservoir in Clearwater County. This brings the total number of stations to 66 in the state. Pat and Lanny from the North Region construction crew were extremely helpful in constructing the roofs and frames for these stations.
- ✦ In April, United States Secretary of Homeland Security Jeh Johnson appointed Boating Program Manager Dave Dahms to the National Boating Safety Advisory Council (NBSAC). Dave attended his first NBSAC meeting in Washington D.C. in May.

OFF-HIGHWAY VEHICLE PROGRAM: TROY ELMORE

Following is a list of activities that have been recently completed by the Motorized Trails Program Staff. This is in addition to the routine tasks of OHV education, trail maintenance, public outreach, and routine correspondence.

- ✦ Held Trail Ranger/Trail Cat Training at the Boise HQ office.
- ✦ Conducted land-manager OHV trail maintenance workshop with NOHVCC (National OHV Conservation Council) for USFS, BLM, and some enthusiasts.
- ✦ Worked with Lost River Ranger District on trail signage to discourage off-trail riding.

- ✦ Continued work on Canfield trail maintenance project
<https://www.facebook.com/events/725574550823822/?source=1>
- ✦ Conducted 57 OHV (ATV, UTV, and motorbike) classes for 463 students.
- ✦ Worked with Mountain Home Ranger District to design and reroute trail segments in Danskin Mountains in response to issues resulting from the Danskin fire.
- ✦ Worked with IDL in Idaho City to decommission routes that will no longer be used for recreation.
- ✦ “Ride Tomorrow” helmet campaign launched at <http://ridetomorrow.org/2014/06/ride-tomorrow/>
- ✦ Submitted article to Dirt Toys Magazine regarding NOHVCC land-manager trail maintenance workshop.

OUTDOOR RECREATION ANALYST: JEFF COOK

The following is a list of activities that have been recently completed by the Outdoor Recreation Analyst.

- ✦ Continued working with the Idaho Trails Web Application Updates. The Export to Google Earth Function is back and now offers more detail on the KMZ (Google Earth) file. The KMZ file contains all the information on the route that is in the trails application.
- ✦ Reviewed and prepared comments on numerous proposed federal land NEPA documents. Met with Idaho City Ranger District staff to discuss access and yurt protections for the Becker Integrated Project. Written responses on mostly Integrated Resource Management Project on U.S. Forest Service Land. These are complex projects that include timber harvest, prescribed burning, road construction and decommissioning, and watershed restoration.
- ✦ Continued to attend collaboration meetings for the Big Creek-Yellow Pine Restoration Project and the Nez Perce-Clearwater Forest Plan. The Nez-Perce Clearwater National Forest is offering us cooperating agency status for the development of the new plan.

NON-MOTORIZED TRAILS PROGRAM: LEO HENNESSY

The overall mission is to improve non-motorized trail opportunities in Idaho by working with various landowners, user groups, and other relevant parties to facilitate quality recreation opportunities.

- ✦ Attended Ada County Foundation trail system (FACTS) trail meetings and helped with development of the nearly completed Idaho’s statewide Bike/Ped plan.
- ✦ Met with various individuals and groups to research additional funding options for non-motorized trails.
- ✦ The Elkhorn yurt was dismantled, the floor renovated, and the interior linings cleaned and replaced.
- ✦ The yurt occupancy rates have greatly increased over the last three years from 20% to 67%. **Every weekend is now being booked for the entire year.** Additional staff hours are required to keep up with the heavy use.
- ✦ Currently planning the annual September 5-7, Idaho City trails maintenance weekend at the Beaver Creek Cabin.