

Painted Lady Butterfly

(Vanessa cardui)



Flora
Fauna



How to Identify:

- An orange and black butterfly with a wingspan of 1¾–2½ inches.
- Underside of wings is a gray, brown, and black pattern.
- Note white spots on the dark forewing tips
- The orange and black Monarch butterfly is much larger

Habitat:

- Lives in a variety of habitats including fields, marshes, forest clearings, prairies, dunes, scrub, deserts, suburbs, gardens, and to above treeline in alpine terrain.
- This is a migratory butterfly; it travels northward in spring and summer through several generations of adults, last flight is to the south in fall.
- Caterpillar stage feeds on more than 100 different types of plants.

Adults feed on flower nectar from many different types of wildflowers, rotting fruit, sap, dung, and mud.

Explore Idaho
with Scout the Fox!

Scout



Painted Lady Butterfly

(*Vanessa cardui*)

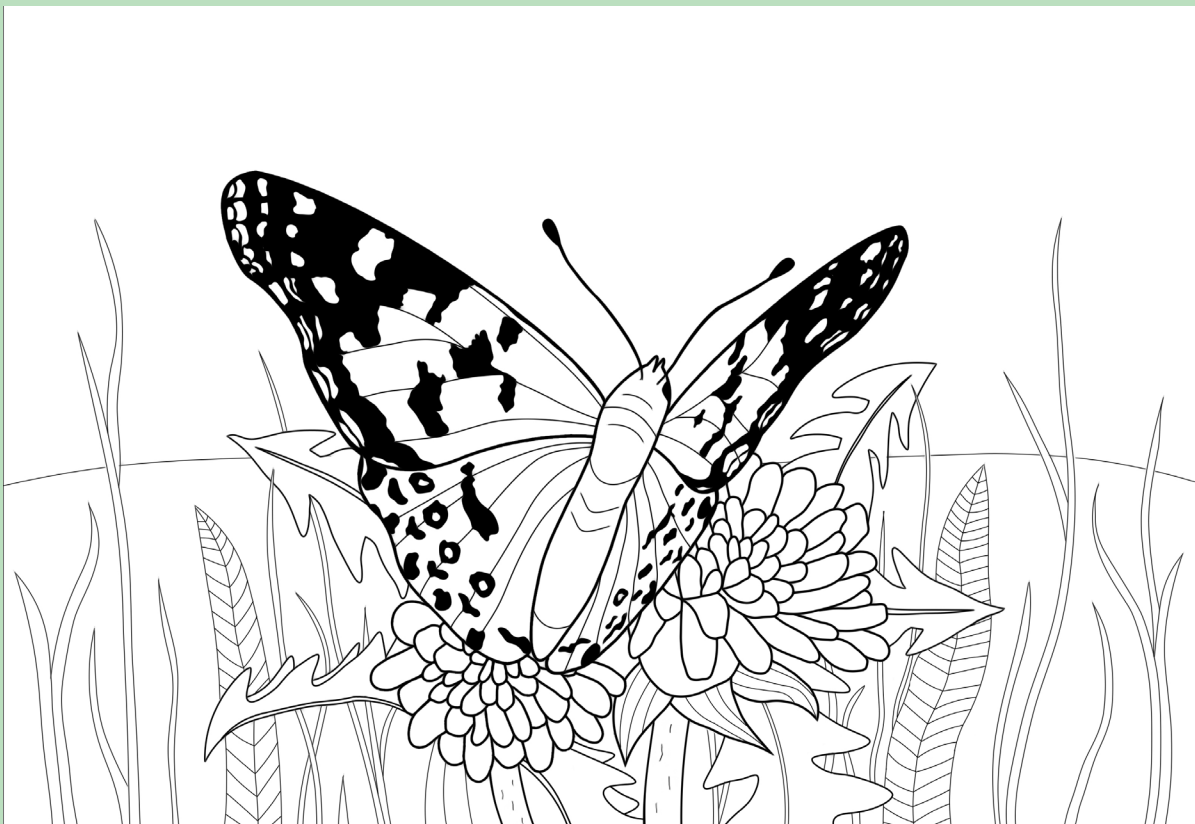


Flora
Fauna

More Fun Facts!

- Painted Ladies help to pollinate many types of plants.
- Males perch on hilltop plants, and sometimes patrol looking for passing females.
- Populations can be much larger in years with more spring rains in their overwintering areas.
- The Painted Lady has the widest distribution of any butterfly in the world. It is found on all continents except Australia and Antarctica.

COLOR ME





Portals to Parks



Painted Lady Butterfly

(Vanessa cardui)



Flora
Fauna

Help Protect the Painted Lady

- Minimize use of pesticides and herbicides.
- Support conservation of natural areas for all wildlife.
- Plant native wildflowers in your backyard.

ACTIVITY TIME

On your next visit to an Idaho State Park, check out the butterflies you see and notice if any are Painted Ladies.

Imagine you could follow a Painted Lady butterfly on its migration from Mexico to Idaho. What kinds of challenges do you think it might face along the way?

Idaho Department of Parks and Recreation

parksandrecreation.idaho.gov

Thanks to the Idaho Department of Fish and Game and the State of Montana Field Guide for wildlife information.