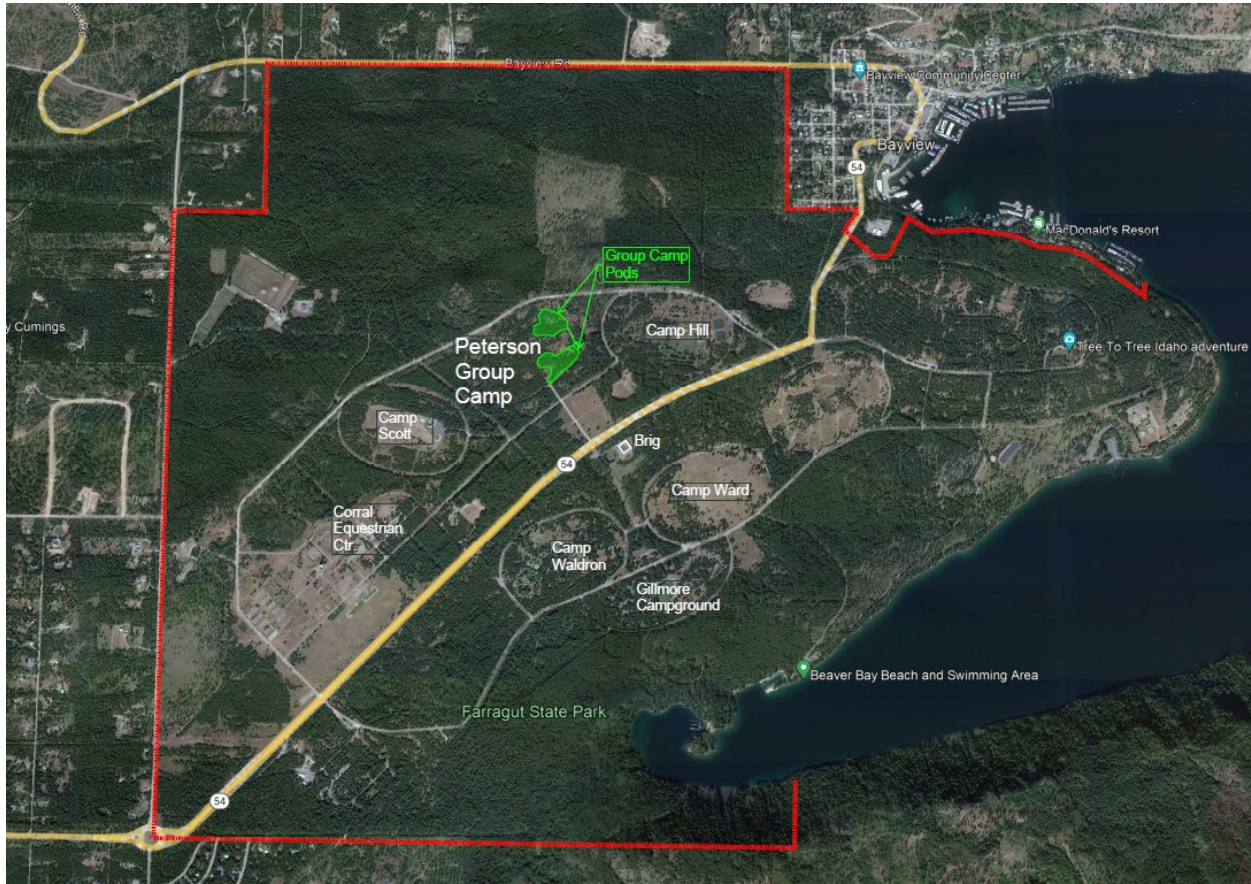


Farragut Peterson Group Camp Development



Farragut State Park is the largest destination camping park in the Idaho State Parks system. While Farragut offers a plethora of camping options, none adequately addresses the needs of group use. The Peterson Group Camp will be a completely new concept which is specifically designed for group use. In addition, it will accommodate groups of all ages and abilities by offering a mixture of camping options all together such as tent pads, RV sites, and camper cabins. This will allow for those with different needs and preferences to camp together with their friends and family. While allowing for a better experience for group use it also improves the experience at existing campgrounds by removing potentially conflicting group use out of existing campgrounds.

The new group campground concept at Farragut is an integral component to the success of the entire camping experience throughout Farragut. As the largest and busiest camping park in the state park system Farragut must meet a diverse range of needs. Farragut fields a large demand for group camping experiences. This shared experience is practically impossible for groups to achieve through the current reservation system by trying to reserve individual spots next to each other in a typical campground. Typical campgrounds are also not designed for group camping, which leads to a diminished experience for those wanting a group experience as well as negatively impacting surrounding campers and creating a challenging management environment for park staff. The creation of a group campground with separate pods for each group will allow for an optimum group experience as well as eliminate conflicts with other campers.

This project will develop a new multi-generational group campground. The group campground will consist of two pods each designed to accommodate between 50 to 75 people. Each pod will include a variety of camping accommodations including 10 RV full service paved sites (8 pull through, 2 loop), 5 oversized tent pads, and 2 camper cabins. A paved campground loop road will provide access to all sites.

All RV sites will offer water, sewer, and electric hook-ups with 50-amp service. Each site will have a hardened, defined living pad. Tent pads will be oversized to accommodate more than one tent and defined so that camp sites do not spread and damage surrounding natural resources. Camper Cabins will be simple structures designed with power for heating/cooling and lighting. The cabins will be designed to accommodate 2 beds and a small porch.

The center of each pod will contain a large group shelter designed for gathering and group food preparation. The food prep area will include prep/cleaning counters, serving area, a sink, and power. The shelter will also include lighting and power outlets, two flush toilets and a storage/utility room. A vault toilet will also be provided near the tent sites and camper cabins.

The project will also develop a centrally located restroom/shower building to service the campground. The campground development will also include a campground host site with full hook-ups. This project includes the development of water lines, sewer lines to connect to a new lift station located at the southeastern side of the Peterson loop, and electrical service.

Construction begins in the fall of 2024 and to be opened for occupancy in 2025.