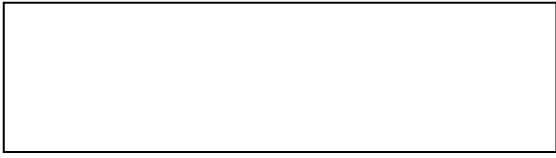


For latest updates and information, visit the Ponderosa Projects page at parksandrecreation.idaho.gov/parks/ponderosa/ponderosa-projects/

###



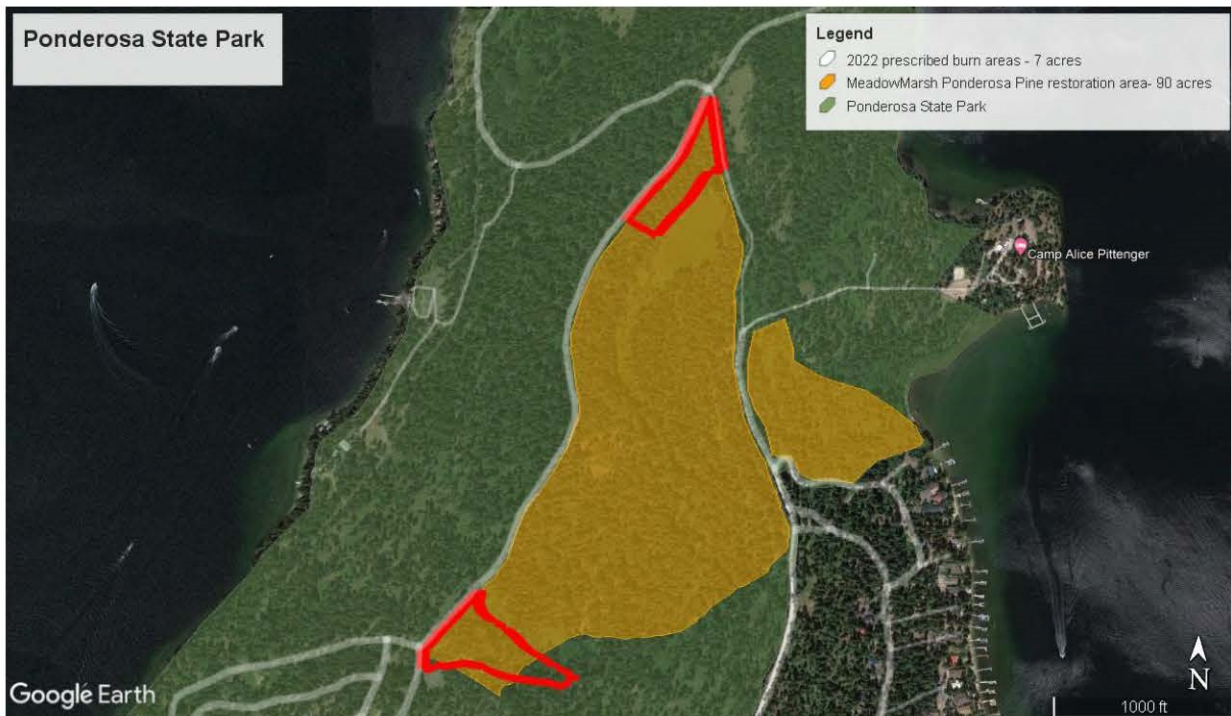
Prescribed Burn for the Meadow Marsh project area

Past management of suppressing natural disturbance agents (fire) have had detrimental effects on the resilience and natural functioning of this Ponderosa Pine Forest. Historically, this forest would have burned every 15 – 30 years which maintained certain forest conditions. Fire suppression over the last 80 – 100 years has changed the forest structure (increased stand density), changed composition (Ponderosa Pine to Grand Fir), and has dramatically affected the functioning of many of the forest communities in the Park.

Through mechanical thinning of much of the shade tolerant Grand fir on this site, we can now safely re-introduce fire in a historically low intensity way, re-creating the natural disturbance regime this forest and its constituents evolved with.

Working with SITPA (Southern Idaho Timber Protection Area), the Park has developed a plan to reintroduce fire gradually and systematically in a prescribed way to small units (5 – 20 acres at a time) on the 90-acre MeadowMarsh Ponderosa Pine restoration area over the next 3 – 5 years.

This fall (202), the Park, in cooperation with the Southern Idaho Timber Protection Association, plans to broadcast burn 2 units, encompassing 7 acres on the north and south ends of MeadowMarsh project area.



Resource Objectives

- Create a more resilient, historically representative, pre fire suppressed, Ponderosa Pine stand.
- Reduce hazard fuels.
- Promote growth of medium to large size trees, prioritizing Ponderosa Pine, Western Larch, Douglas Fir, and Engelmann Spruce.
- Promote Ponderosa Pine regeneration.
- Promote growth of grass and forbs to improve diversity and overall aesthetics.

