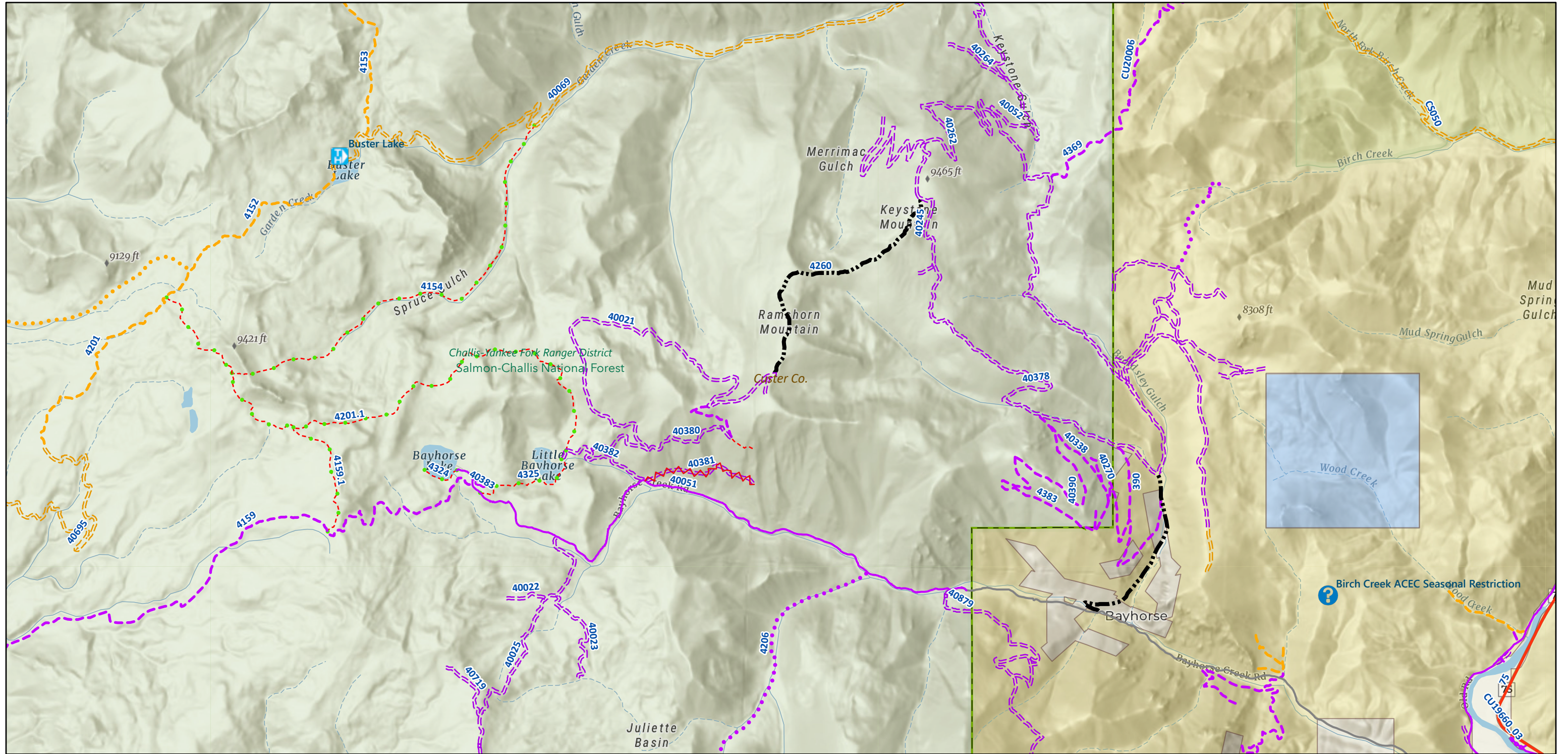


Bayhorse Overview as of September 2025, see latest edition at <https://arcg.is/0fG1zu1>



11/10/2025, 12:09:02 PM

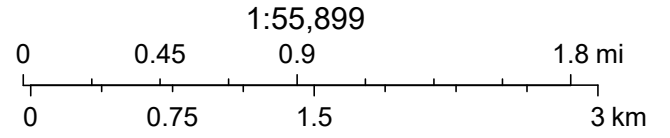
- Route Closures
- Info & Map Links, Trailheads, OHV Areas
- Information
- Trailhead
- Highway-legal (OHVs prohibited)
- Highway-legal

- Automobile (OHVs regulated)
- Automobile
- Other Roads (OHVs with Restricted Plate)
- Other Road
- High-clearance (all OHVs and 4WD)
- High-clearance

- High-clearance (Seasonal)
- Special Vehicle Designations
- Special Vehicle Designation
- OHVs 50" and Under
- OHVs 50" and under
- OHVs 50" and under (Seasonal)

- Motorcycle
- Motorcycle
- Motorcycle (Seasonal)
- Non-motorized
- Non-mechanized
- Counties

- Publicly Accessible Endowment Lands (IDL)
- Yes
- National Forests
- BLM Land Unit Boundaries
- World_Hillshade



Esri, NASA, NGA, USGS, Sources: Esri, TomTom, Garmin, FAO, NOAA, USGS, © OpenStreetMap contributors, and the GIS User Community