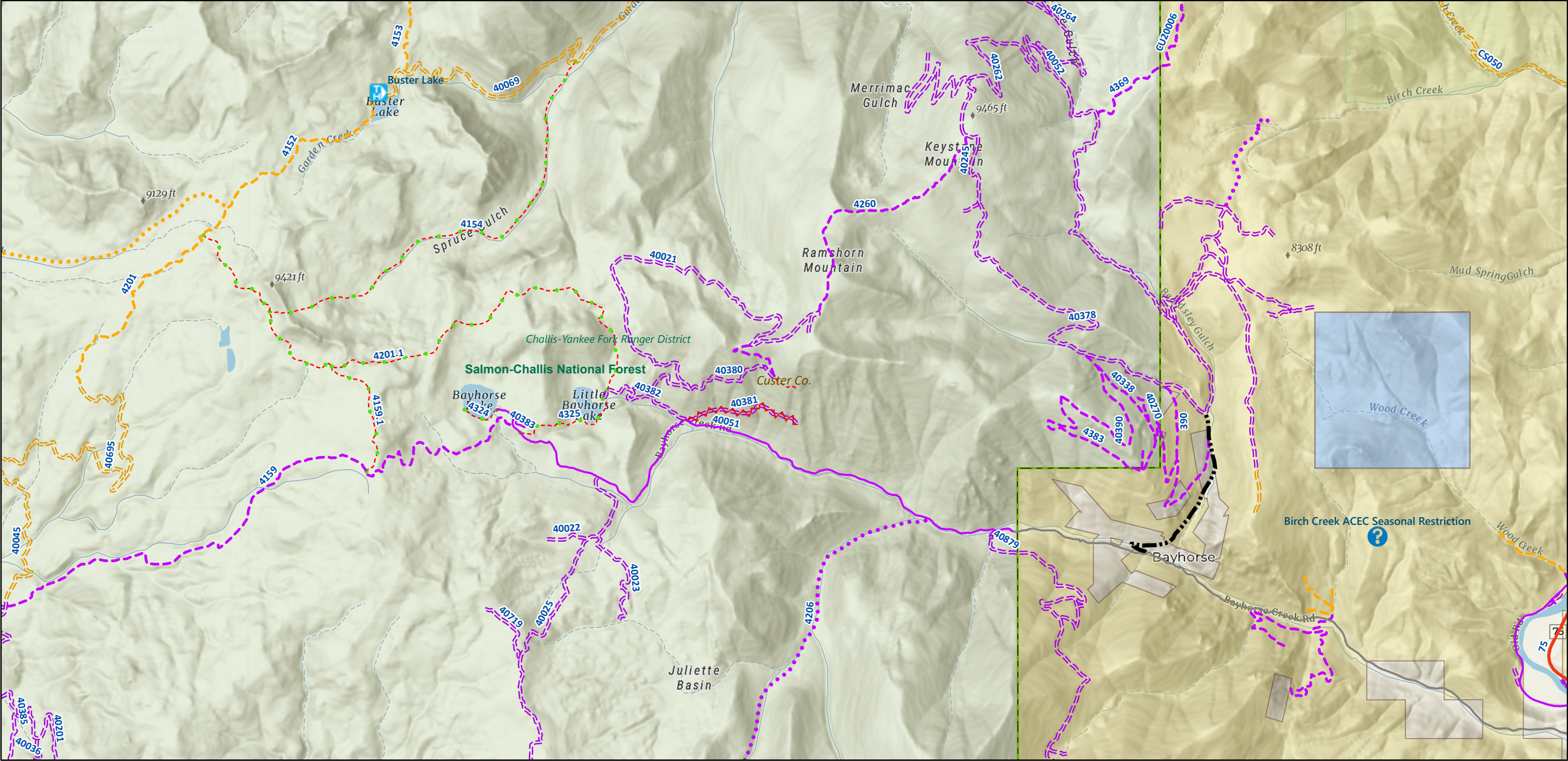


Bayhorse Overview (as of May 2025, see latest edition at <https://arcg.is/0fG1zu1>)



5/20/2025, 2:59:06 PM

Route Closures

Info & Map Links, Trailheads, OHV Areas



Information



Trailhead

Highway-legal (OHVs prohibited)

Highway-legal

Automobile (OHVs regulated)

Automobile

Other Roads (OHVs with Restricted Plate)

Other Road

High-clearance (all OHVs and 4WD)

High-clearance

High-clearance (Seasonal)

Special Vehicle Designations

Special Vehicle Designation

OHVs 50" and Under

OHVs 50" and under

OHVs 50" and under (Seasonal)

Motorcycle

Motorcycle

Motorcycle (Seasonal)

Non-motorized

Non-mechanized

Counties

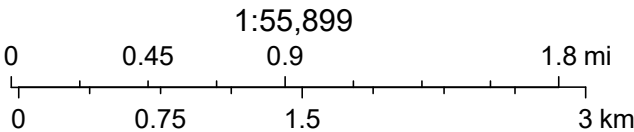
Publicly Accessible Endowment Lands (IDL)

Yes

National Forests

BLM Land Unit Boundaries

World\_Hillshade



Esri, NASA, NGA, USGS, Sources: Esri, TomTom, Garmin, FAO, NOAA, USGS, © OpenStreetMap contributors, and the GIS User Community