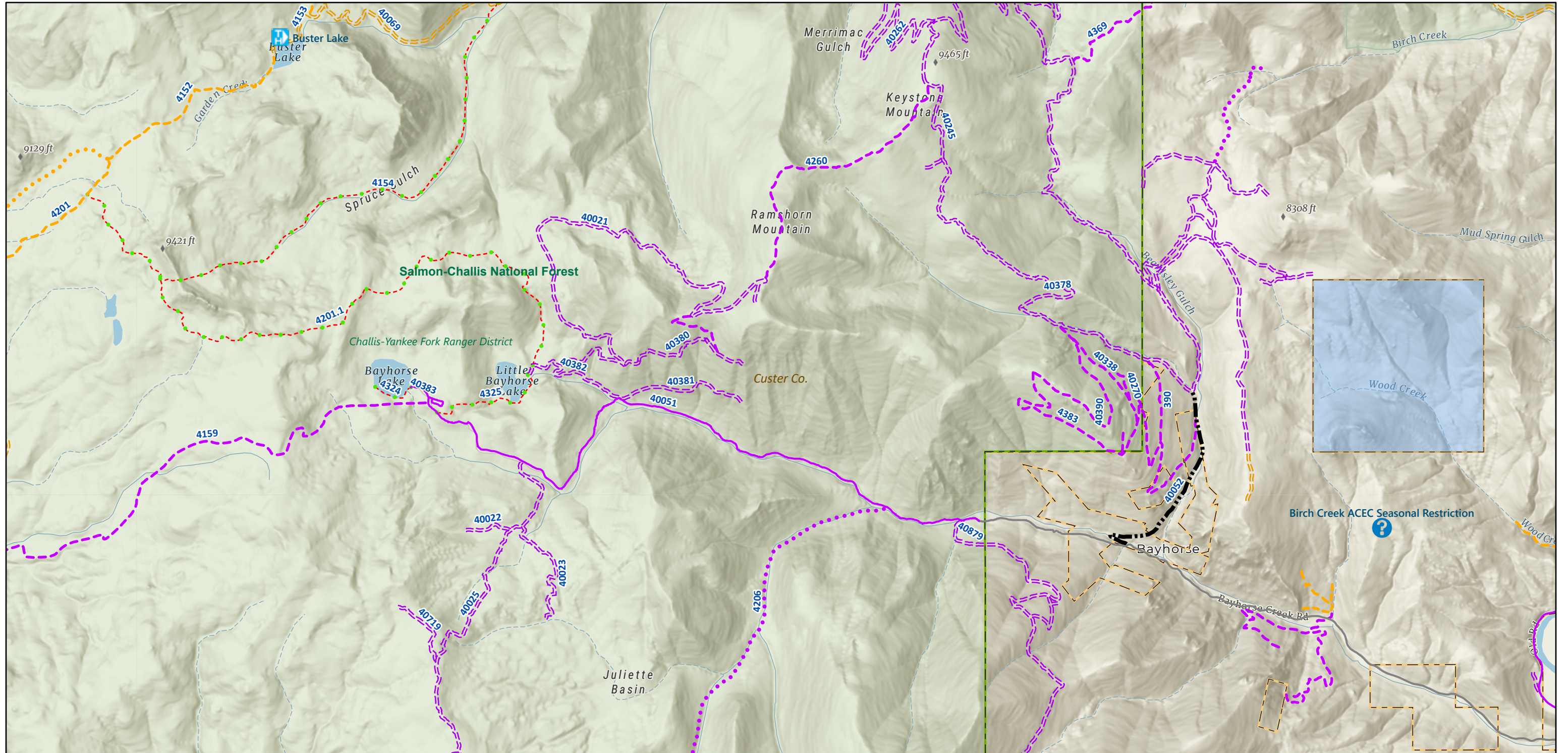


# Bayhorse Trails Overview 7/5/2024



7/5/2024, 5:20:00 PM

Points of Interest

Information

Trailhead

Automobile (OHVs regulated)

Automobile

Other Roads (OHVs with Restricted Plate) OHVs 50" and Under

Other Road

High-clearance (all OHVs and 4WD)

High-clearance

High-clearance (Seasonal)

Special Vehicle Designations

Special Vehicle Designation

OHVs 50" and under

OHVs 50" and under

OHVs 50" and under (Seasonal)

Motorcycle

Motorcycle

Motorcycle (Seasonal)

Non-motorized

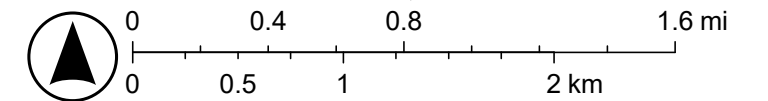
Counties

Publicly Accessible Endowment Lands (IDL)

Yes

National Forests

BLM Land Unit Boundaries



Esri, NASA, NGA, USGS, Montana State Library, Esri, TomTom, Garmin, SafeGraph, GeoTechnologies, Inc, METI/NASA, USGS, Bureau of Land Management, EPA, NPS, USDA, USFWS