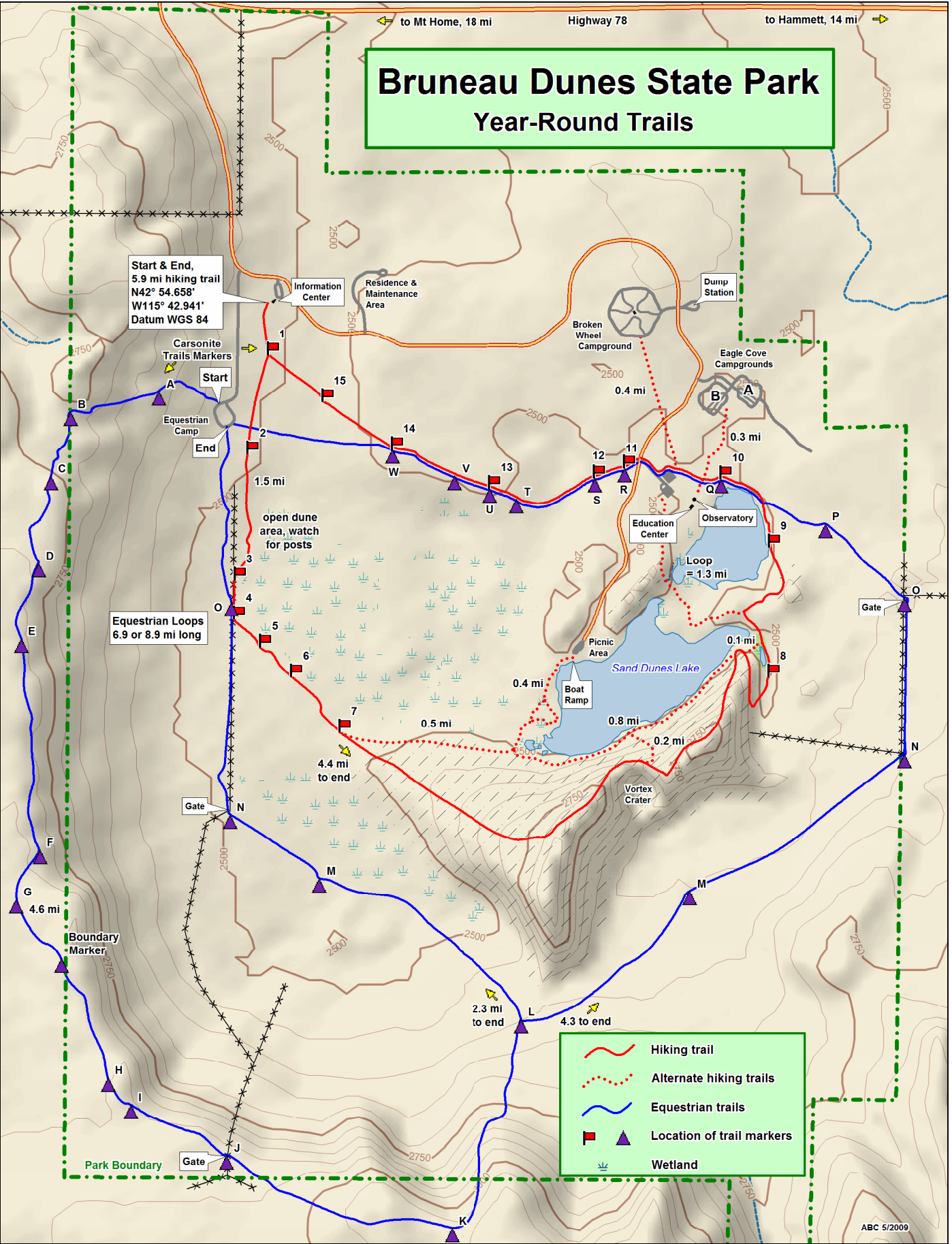


Bruneau Dunes State Park Year-Round Trails



Start & End,
5.9 mi hiking trail
N42° 54.658'
W115° 42.941'
Datum WGS 84

Equestrian Loops
6.9 or 8.9 mi long

open dune area, watch
for posts

-  Hiking trail
-  Alternate hiking trails
-  Equestrian trails
-  Location of trail markers
-  Wetland