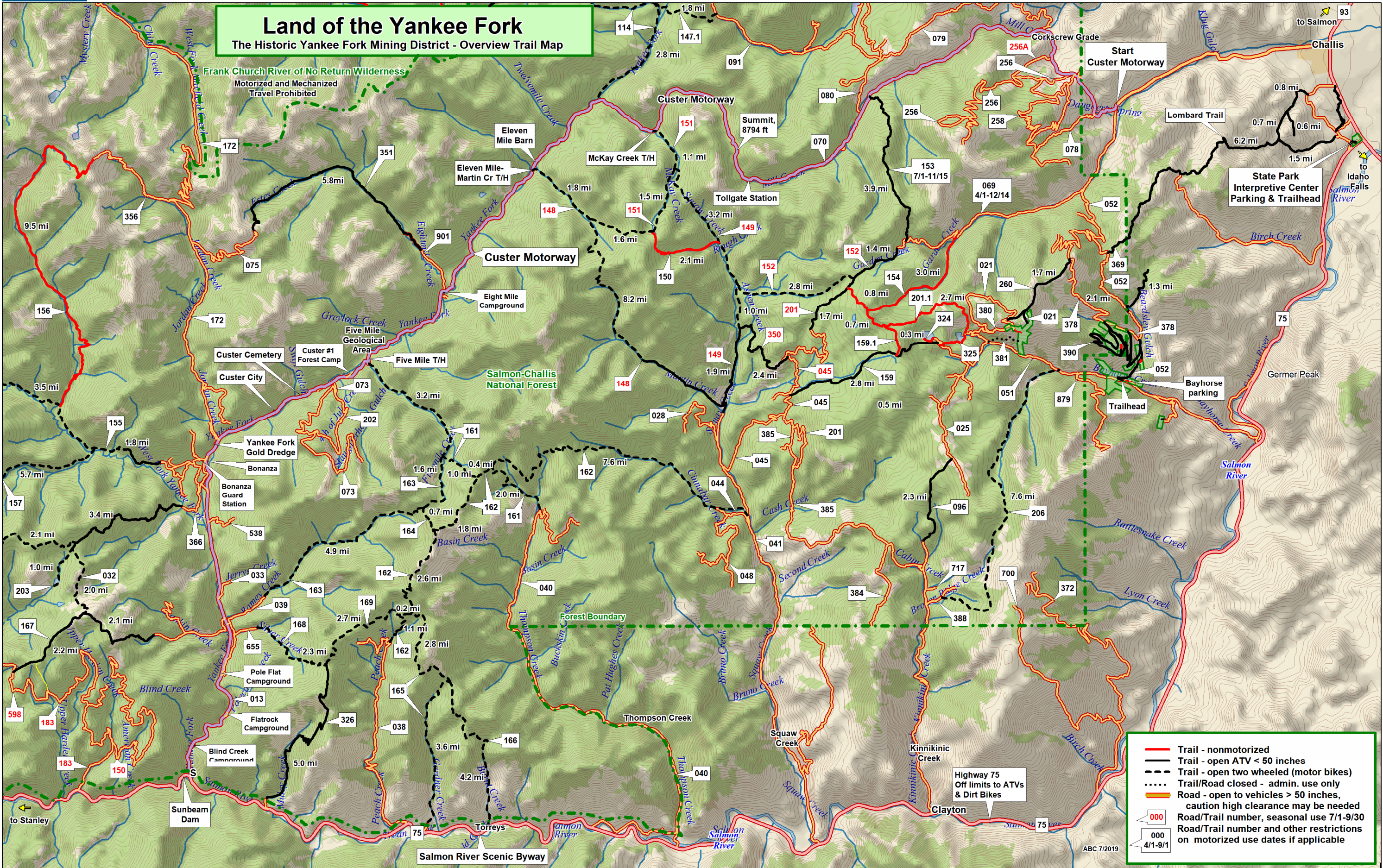


# Land of the Yankee Fork

## The Historic Yankee Fork Mining District - Overview Trail Map



	Trail - nonmotorized
	Trail - open ATV < 50 inches
	Trail - open two wheeled (motor bikes)
	Trail/Road closed - admin. use only
	Road - open to vehicles > 50 inches, caution high clearance may be needed
	Road/Trail number, seasonal use 7/1-9/30
	Road/Trail number and other restrictions on motorized use dates if applicable