



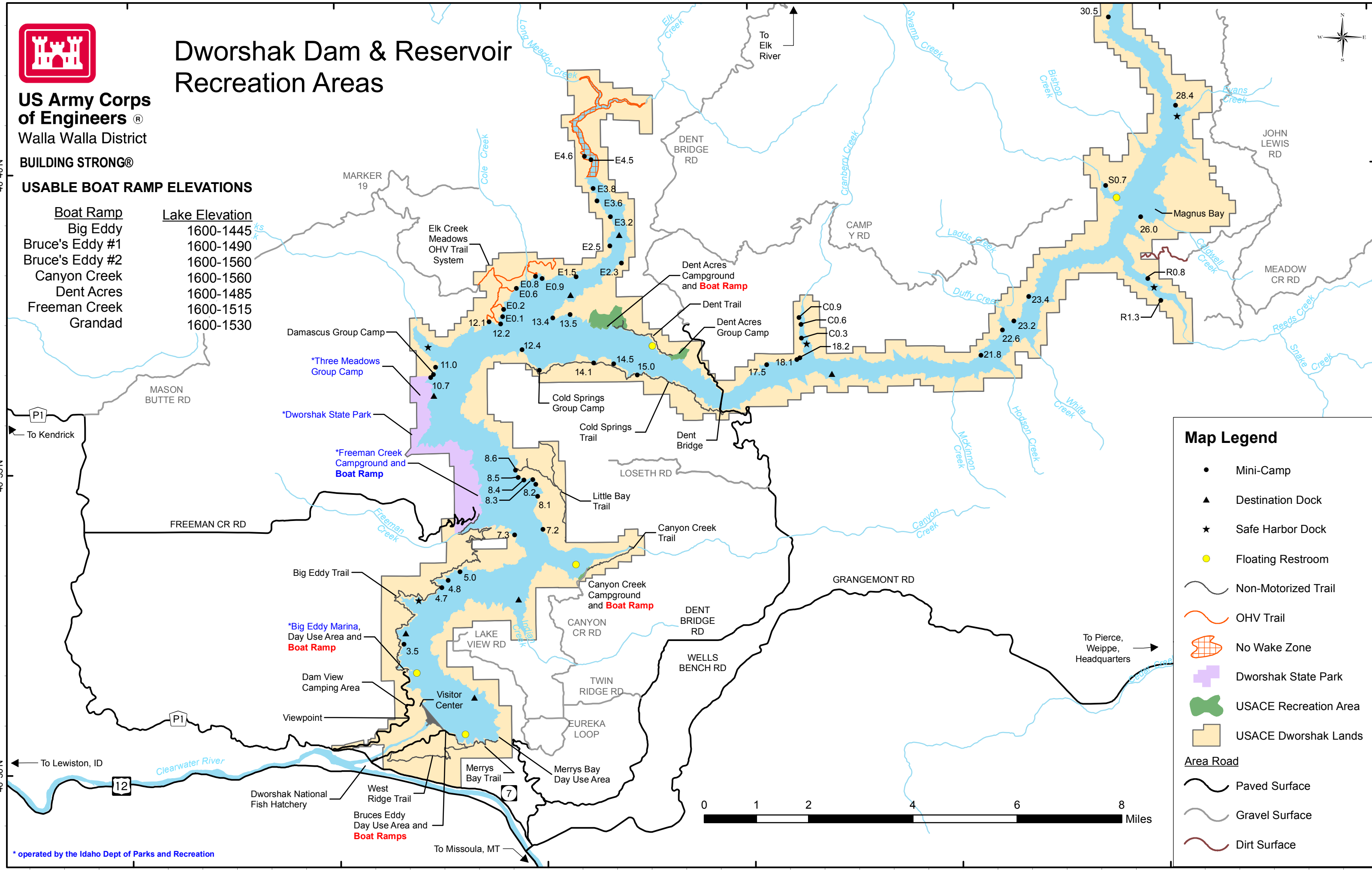
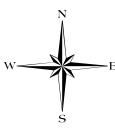
Dworshak Dam & Reservoir Recreation Areas

**US Army Corps
of Engineers**®
Walla Walla District

BUILDING STRONG®

USABLE BOAT RAMP ELEVATIONS

Boat Ramp	Lake Elevation
Big Eddy	1600-1445
Bruce's Eddy #1	1600-1490
Bruce's Eddy #2	1600-1560
Canyon Creek	1600-1560
Dent Acres	1600-1485
Freeman Creek	1600-1515
Grandad	1600-1530



Map Legend

- Mini-Camp
 - ▲ Destination Dock
 - ★ Safe Harbor Dock
 - Floating Restroom
 - ~ Non-Motorized Trail
 - ~ OHV Trail
 - ~ No Wake Zone
 - ✚ Dworshak State Park
 - ~ USACE Recreation Area
 - ~ USACE Dworshak Lands
- Area Road**
- ~ Paved Surface
 - ~ Gravel Surface
 - ~ Dirt Surface

* operated by the Idaho Dept of Parks and Recreation

46°40'N
46°35'N
46°30'N

116°25'W 116°20'W 116°15'W 116°10'W 116°5'W 116°0'W

RECREATION INFORMATION

Dworshak Recreation Areas

<http://www.nww.usace.army.mil/Missions/Recreation/DworshakDamandReservoir.aspx>

Water Temperature and Water Level Information

<http://www.nww.usace.army.mil/Locations/DistrictLocksandDams/DworshakDamandReservoir.aspx>
<http://www.nwd-wc.usace.army.mil/nww/rreports.htm>

Dworshak Visitor Center.....(208) 476-1255

<http://www.nww.usace.army.mil/Missions/Recreation/DworshakDamandReservoir/DworshakVisitorCenter.aspx>

Dent Campground

Entrance Station.....(208) 476-9029

Dent Campground Reservations.....1-877-444-6777 or online at: <http://www.recreation.gov>

Dworshak State Park

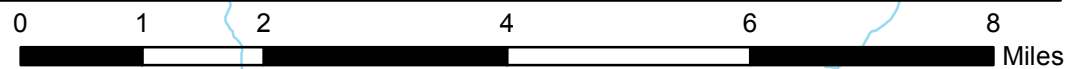
Big Eddy Marina - ONLY FUEL VENDOR ON LAKE.....(208) 476-5994

Freeman Creek Campground.....(208) 476-3132

<http://parksandrecreation.idaho.gov/parks/dworshak.aspx>

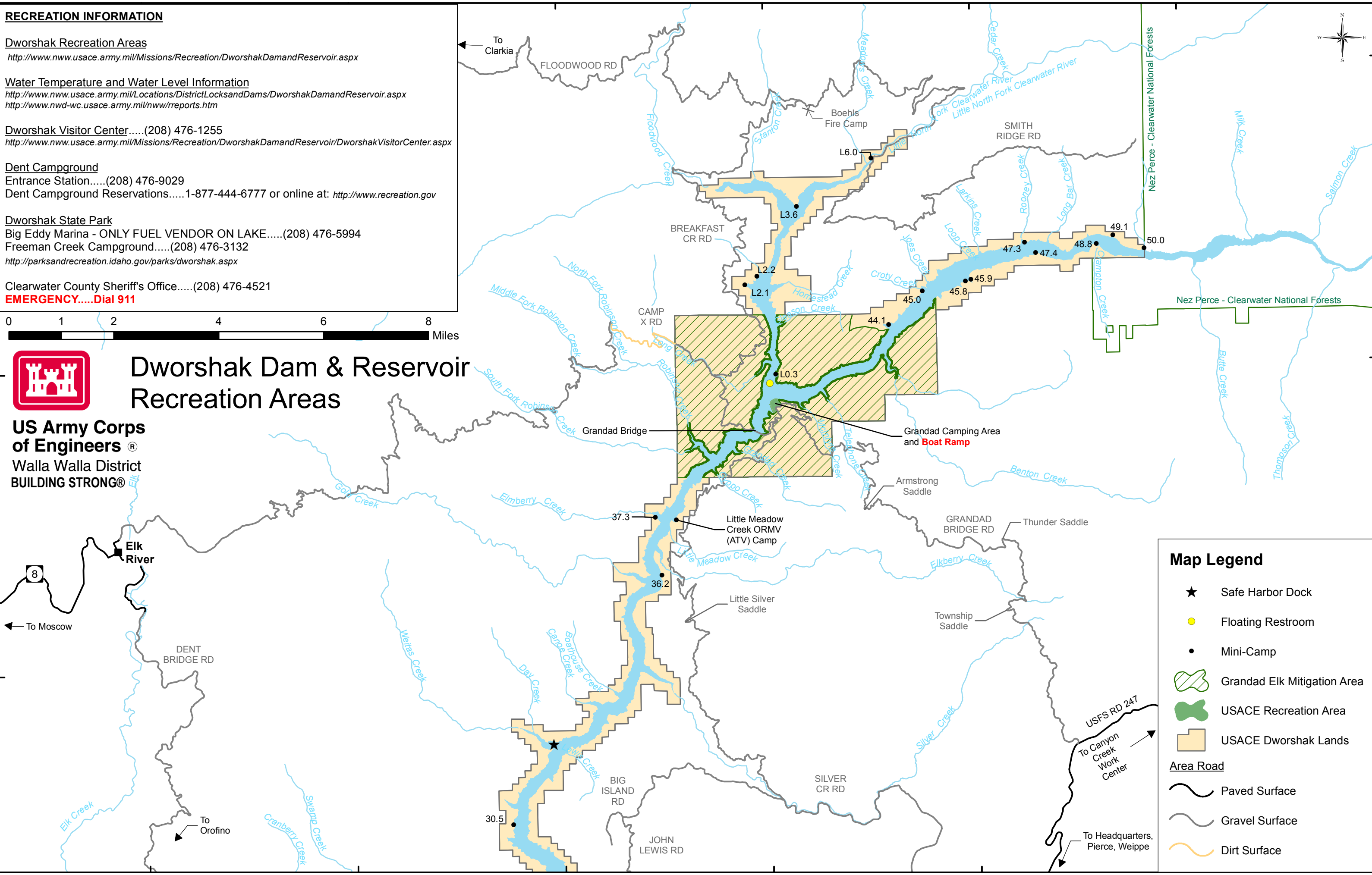
Clearwater County Sheriff's Office.....(208) 476-4521

EMERGENCY.....Dial 911



**Dworshak Dam & Reservoir
Recreation Areas**

**US Army Corps
of Engineers**®
Walla Walla District
BUILDING STRONG®



Map Legend

- ★ Safe Harbor Dock
 - Floating Restroom
 - Mini-Camp
 - ▨ Grandad Elk Mitigation Area
 - ▨ USACE Recreation Area
 - ▨ USACE Dworshak Lands
- Area Road**
- Paved Surface
 - Gravel Surface
 - Dirt Surface

46°55'N

46°50'N

46°45'N

116°10'W

116°5'W

116°0'W

115°55'W

115°50'W

115°45'W